



Datasheet for ABIN390609  
**anti-PDIA6 antibody (AA 236-264)**



[Go to Product page](#)

3 Images

Overview

Quantity:	400 µL
Target:	PDIA6
Binding Specificity:	AA 236-264
Reactivity:	Human
Host:	Rabbit
Clonality:	Polyclonal
Conjugate:	This PDIA6 antibody is un-conjugated
Application:	Western Blotting (WB), Flow Cytometry (FACS), Immunohistochemistry (Paraffin-embedded Sections) (IHC (p))

Product Details

Immunogen:	This PDIA6 antibody is generated from rabbits immunized with a KLH conjugated synthetic peptide between 236-264 amino acids from the Central region of human PDIA6.
Clone:	RB20200
Isotype:	Ig Fraction
Predicted Reactivity:	M, Rat
Purification:	This antibody is prepared by Saturated Ammonium Sulfate (SAS) precipitation followed by dialysis against PBS.

Target Details

Target:	PDIA6
---------	-------

## Target Details

---

Alternative Name:	PDIA6 ( <a href="#">PDIA6 Products</a> )
Background:	Protein disulfide isomerases (EC 5.3.4.1), such as PDIA6, are endoplasmic reticulum (ER) resident proteins that catalyze formation, reduction, and isomerization of disulfide bonds in proteins and are thought to play a role in folding of disulfide-bonded proteins.
Molecular Weight:	48121
Gene ID:	10130
NCBI Accession:	<a href="#">NP_005733</a>
UniProt:	<a href="#">Q15084</a>
Pathways:	<a href="#">ER-Nucleus Signaling</a> , <a href="#">Cell Redox Homeostasis</a>

## Application Details

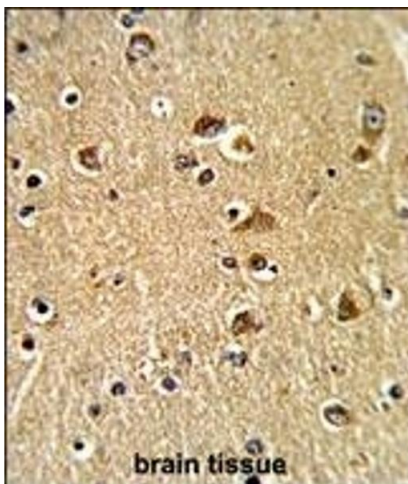
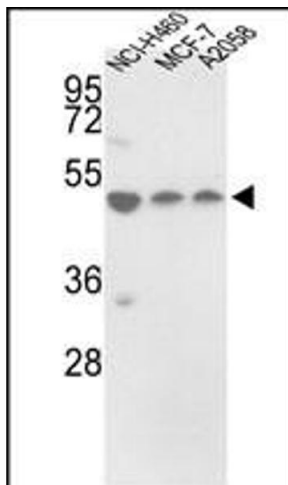
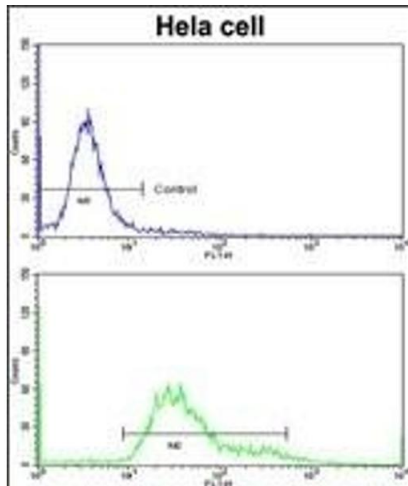
---

Application Notes:	WB: 1:1000. IHC-P: 1:50~100. FC: 1:10~50
Restrictions:	For Research Use only

## Handling

---

Format:	Liquid
Buffer:	Purified polyclonal antibody supplied in PBS with 0.09 % (W/V) sodium azide.
Preservative:	Sodium azide
Precaution of Use:	This product contains Sodium azide: a POISONOUS AND HAZARDOUS SUBSTANCE which should be handled by trained staff only.
Storage:	4 °C, -20 °C
Storage Comment:	Maintain refrigerated at 2-8 °C for up to 6 months. For long term storage store at -20 °C in small aliquots to prevent freeze-thaw cycles.
Expiry Date:	6 months



### Flow Cytometry

**Image 1.** Flow cytometric analysis of heLa cells using PDIA6 Antibody (Center ) (bottom histogram) compared to a negative control cell (top histogram). FITC-conjugated goat-anti-rabbit secondary antibodies were used for the analysis.

### Western Blotting

**Image 2.** Western blot analysis of PDIA6 Antibody (Center ) (ABIN390609 and ABIN2840921) in NCI-, MCF-7, cell line lysates (35 µg/lane). PDIA6 (arrow) was detected using the purified Pab.

### Immunohistochemistry (Paraffin-embedded Sections)

**Image 3.** Formalin-fixed and paraffin-embedded human brain tissue reacted with PDIA6 Antibody (Center ), which was peroxidase-conjugated to the secondary antibody, followed by DAB staining. This data demonstrates the use of this antibody for immunohistochemistry, clinical relevance has not been evaluated.