

Datasheet for ABIN390611  
**anti-ZBTB16 antibody (C-Term)**[Go to Product page](#)

## 1 Image

## Overview

Quantity:	400 µL
Target:	ZBTB16
Binding Specificity:	AA 637-666, C-Term
Reactivity:	Human
Host:	Rabbit
Clonality:	Polyclonal
Conjugate:	This ZBTB16 antibody is un-conjugated
Application:	Western Blotting (WB)

## Product Details

Immunogen:	This PLZF antibody is generated from rabbits immunized with a KLH conjugated synthetic peptide between 637-666 amino acids from the C-terminal region of human PLZF.
Clone:	RB18799
Isotype:	Ig Fraction
Purification:	This antibody is prepared by Saturated Ammonium Sulfate (SAS) precipitation followed by dialysis against PBS.

## Target Details

Target:	ZBTB16
Alternative Name:	PLZF ( <a href="#">ZBTB16 Products</a> )

## Target Details

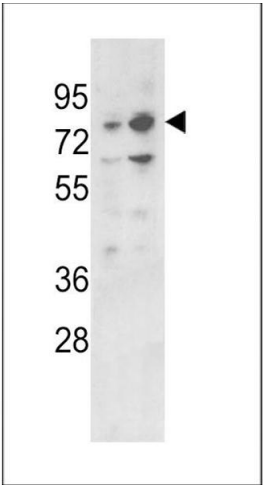
Background:	PLZF is a member of the Krueppel C2H2-type zinc-finger protein family and a zinc finger transcription factor that contains nine Kruppel-type zinc finger domains at the carboxyl terminus. This protein is located in the nucleus, is involved in cell cycle progression, and interacts with a histone deacetylase. Specific instances of aberrant gene rearrangement at this locus have been associated with acute promyelocytic leukemia (APL).
Molecular Weight:	74274
Gene ID:	7704
NCBI Accession:	<a href="#">NP_001018011</a> , <a href="#">NP_005997</a>
UniProt:	<a href="#">Q05516</a>
Pathways:	<a href="#">Positive Regulation of fat Cell Differentiation</a>

## Application Details

Application Notes:	WB: 1:1000
Restrictions:	For Research Use only

## Handling

Format:	Liquid
Buffer:	Purified polyclonal antibody supplied in PBS with 0.09 % (W/V) sodium azide.
Preservative:	Sodium azide
Precaution of Use:	This product contains Sodium azide: a POISONOUS AND HAZARDOUS SUBSTANCE which should be handled by trained staff only.
Storage:	4 °C, -20 °C
Storage Comment:	Maintain refrigerated at 2-8 °C for up to 6 months. For long term storage store at -20 °C in small aliquots to prevent freeze-thaw cycles.
Expiry Date:	6 months



Western Blotting

**Image 1.** Western blot analysis of PLZF Antibody (C-term) (ABIN390611 and ABIN2840923) in 293, K562 cell line lysates (35 µg/lane). PLZF (arrow) was detected using the purified Pab.