



Datasheet for ABIN390620
anti-SERPING1 antibody (AA 285-314)



[Go to Product page](#)

3 Images

Overview

Quantity:	400 µL
Target:	SERPING1
Binding Specificity:	AA 285-314
Reactivity:	Human
Host:	Rabbit
Clonality:	Polyclonal
Conjugate:	This SERPING1 antibody is un-conjugated
Application:	Western Blotting (WB), Immunofluorescence (IF), Immunohistochemistry (Paraffin-embedded Sections) (IHC (p))

Product Details

Immunogen:	This SERPING1 antibody is generated from rabbits immunized with a KLH conjugated synthetic peptide between 285-314 amino acids from the Central region of human SERPING1.
Clone:	RB17822
Isotype:	Ig Fraction
Purification:	This antibody is prepared by Saturated Ammonium Sulfate (SAS) precipitation followed by dialysis against PBS.

Target Details

Target:	SERPING1
Alternative Name:	SERPING1 (SERPING1 Products)

Target Details

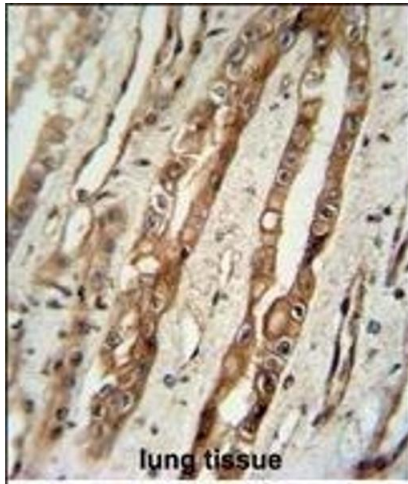
Background:	SERPING1 is a highly glycosylated plasma protein involved in the regulation of the complement cascade. This protein inhibits activated C1r and C1s of the first complement component and thus regulates complement activation. Deficiency of this protein is associated with hereditary angioneurotic oedema (HANE).
Molecular Weight:	55154
Gene ID:	710
NCBI Accession:	NP_000053 , NP_001027466
UniProt:	P05155
Pathways:	Complement System

Application Details

Application Notes:	IF: 1:10~50. WB: 1:1000. IHC-P: 1:50~100
Restrictions:	For Research Use only

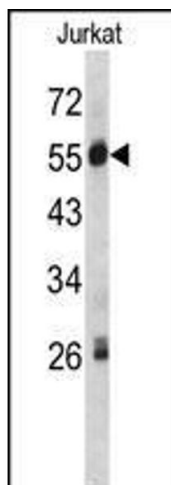
Handling

Format:	Liquid
Buffer:	Purified polyclonal antibody supplied in PBS with 0.09 % (W/V) sodium azide.
Preservative:	Sodium azide
Precaution of Use:	This product contains Sodium azide: a POISONOUS AND HAZARDOUS SUBSTANCE which should be handled by trained staff only.
Storage:	4 °C,-20 °C
Storage Comment:	Maintain refrigerated at 2-8 °C for up to 6 months. For long term storage store at -20 °C in small aliquots to prevent freeze-thaw cycles.
Expiry Date:	6 months



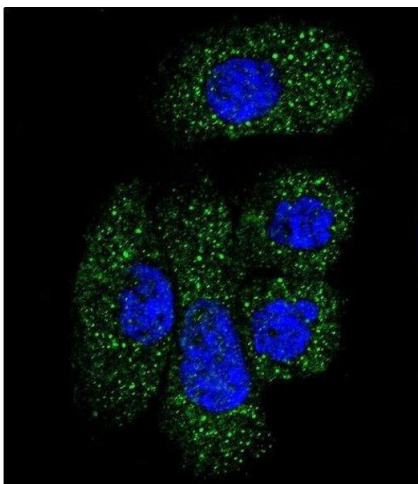
Immunohistochemistry (Paraffin-embedded Sections)

Image 1. SERPING1 Antibody (Center) (ABIN390620 and ABIN2840928) immunohistochemistry analysis in formalin fixed and paraffin embedded human lung tissue followed by peroxidase conjugation of the secondary antibody and DAB staining. This data demonstrates the use of the SERPING1 Antibody (Center) for immunohistochemistry. Clinical relevance has not been evaluated.



Western Blotting

Image 2. Western blot analysis of SERPING1 antibody (Center) (ABIN390620 and ABIN2840928) in Jurkat cell line lysates (35 µg/lane). SERPING1 (arrow) was detected using the purified Pab.



Immunofluorescence

Image 3. Confocal immunofluorescent analysis of SERPING1 Antibody (Center) (ABIN390620 and ABIN2840928) with NCI- cell followed by Alexa Fluor 488-conjugated goat anti-rabbit IgG (green). DI was used to stain the cell nuclear (blue).