

Datasheet for ABIN390632
anti-TACSTD2 antibody (AA 162-190)[Go to Product page](#)

2 Images

Overview

Quantity:	400 µL
Target:	TACSTD2
Binding Specificity:	AA 162-190
Reactivity:	Human
Host:	Rabbit
Clonality:	Polyclonal
Conjugate:	This TACSTD2 antibody is un-conjugated
Application:	Western Blotting (WB), Immunohistochemistry (Paraffin-embedded Sections) (IHC (p))

Product Details

Immunogen:	This TROP2 antibody is generated from rabbits immunized with a KLH conjugated synthetic peptide between 162-190 amino acids from the Central region of human TROP2.
Clone:	RB18111
Isotype:	Ig Fraction
Purification:	This antibody is prepared by Saturated Ammonium Sulfate (SAS) precipitation followed by dialysis against PBS.

Target Details

Target:	TACSTD2
Alternative Name:	TROP2 (TACSTD2 Products)

Target Details

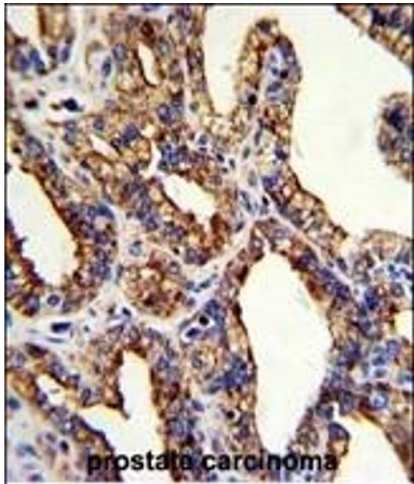
Background:	TROP2 is a carcinoma-associated antigen defined by the monoclonal antibody GA733. This antigen is a member of a family including at least two type I membrane proteins. It transduces an intracellular calcium signal and acts as a cell surface receptor. Mutations of its gene result in gelatinous drop-like corneal dystrophy, an autosomal recessive disorder characterized by severe corneal amyloidosis leading to blindness.
Molecular Weight:	35709
Gene ID:	4070
NCBI Accession:	NP_002344
UniProt:	P09758

Application Details

Application Notes:	WB: 1:1000. IHC-P: 1:50~100
Restrictions:	For Research Use only

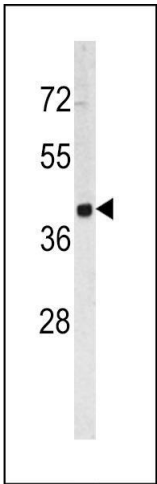
Handling

Format:	Liquid
Buffer:	Purified polyclonal antibody supplied in PBS with 0.09 % (W/V) sodium azide.
Preservative:	Sodium azide
Precaution of Use:	This product contains Sodium azide: a POISONOUS AND HAZARDOUS SUBSTANCE which should be handled by trained staff only.
Storage:	4 °C,-20 °C
Storage Comment:	Maintain refrigerated at 2-8 °C for up to 6 months. For long term storage store at -20 °C in small aliquots to prevent freeze-thaw cycles.
Expiry Date:	6 months



Immunohistochemistry (Paraffin-embedded Sections)

Image 1. Formalin-fixed and paraffin-embedded human prostate carcinoma with TROP2 Antibody (Center), which was peroxidase-conjugated to the secondary antibody, followed by DAB staining. This data demonstrates the use of this antibody for immunohistochemistry, clinical relevance has not been evaluated.



Western Blotting

Image 2. Western blot analysis of TROP2 antibody (Center) (ABIN390632 and ABIN2840936) in HL60 cell line lysates (35 µg/lane). TROP2 (arrow) was detected using the purified Pab.