

Datasheet for ABIN390639
anti-ZWINT antibody (AA 59-88)

5 Images

[Go to Product page](#)

Overview

Quantity:	400 µL
Target:	ZWINT
Binding Specificity:	AA 59-88
Reactivity:	Human, Mouse
Host:	Rabbit
Clonality:	Polyclonal
Conjugate:	This ZWINT antibody is un-conjugated
Application:	Western Blotting (WB), Immunohistochemistry (Paraffin-embedded Sections) (IHC (p)), Flow Cytometry (FACS)

Product Details

Immunogen:	This ZWINT antibody is generated from rabbits immunized with a KLH conjugated synthetic peptide between 59-88 amino acids from the Central region of human ZWINT.
Clone:	RB19982
Isotype:	Ig Fraction
Purification:	This antibody is prepared by Saturated Ammonium Sulfate (SAS) precipitation followed by dialysis against PBS.

Target Details

Target:	ZWINT
Alternative Name:	ZWINT (ZWINT Products)

Target Details

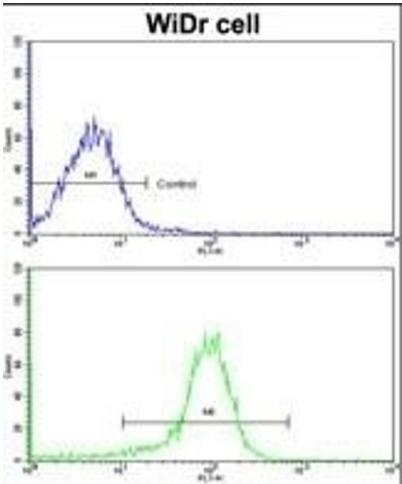
Background:	ZWINT is clearly involved in kinetochore function although an exact role is not known. It interacts with ZW10, another kinetochore protein, possibly regulating the association between ZW10 and kinetochores. The protein localizes to prophase kinetochores before ZW10 does and it remains detectable on the kinetochore until late anaphase. It has a uniform distribution in the cytoplasm of interphase cells.
Molecular Weight:	31293
Gene ID:	11130
NCBI Accession:	NP_001005413 , NP_008988 , NP_127490
UniProt:	O95229

Application Details

Application Notes:	WB: 1:1000. WB: 1:1000. WB: 1:1000. IHC-P: 1:50~100. FC: 1:10~50
Restrictions:	For Research Use only

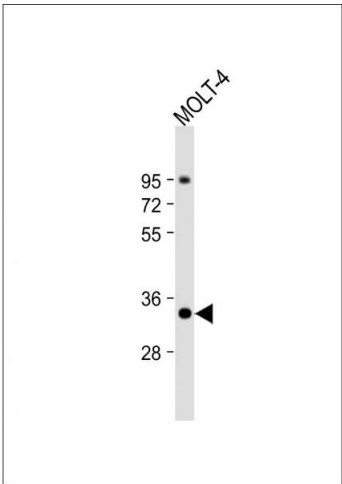
Handling

Format:	Liquid
Buffer:	Purified polyclonal antibody supplied in PBS with 0.09 % (W/V) sodium azide.
Preservative:	Sodium azide
Precaution of Use:	This product contains Sodium azide: a POISONOUS AND HAZARDOUS SUBSTANCE which should be handled by trained staff only.
Storage:	4 °C,-20 °C
Storage Comment:	Maintain refrigerated at 2-8 °C for up to 6 months. For long term storage store at -20 °C in small aliquots to prevent freeze-thaw cycles.
Expiry Date:	6 months



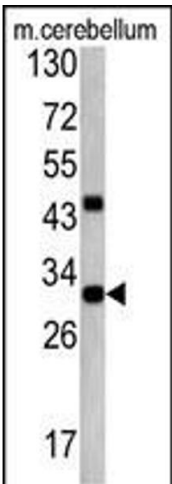
Flow Cytometry

Image 1. Flow cytometric analysis of widr cells using ZWINT Antibody (Center)(bottom histogram) compared to a negative control cell (top histogram). FITC-conjugated goat-anti-rabbit secondary antibodies were used for the analysis.



Western Blotting

Image 2. Anti-ZWINT Antibody (Center) at 1:1000 dilution + MOLT-4 whole cell lysate Lysates/proteins at 20 µg per lane. Secondary Goat Anti-Rabbit IgG, (H+L), Peroxidase conjugated at 1/10000 dilution. Predicted band size : 31 kDa Blocking/Dilution buffer: 5 % NFDM/TBST.



Western Blotting

Image 3. Western blot analysis of ZWINT antibody (Center) (ABIN390639 and ABIN2840941) in mouse cerebellum tissue lysates (35 µg/lane). ZWINT (arrow) was detected using the purified Pab.

Please check the [product details page](#) for more images. Overall 5 images are available for ABIN390639.