



[Go to Product page](#)

Datasheet for ABIN390653
anti-CCL2 antibody (C-Term)

5 Images

1 Publication

Overview

Quantity:	400 µL
Target:	CCL2
Binding Specificity:	AA 62-89, C-Term
Reactivity:	Human
Host:	Rabbit
Clonality:	Polyclonal
Conjugate:	This CCL2 antibody is un-conjugated
Application:	Western Blotting (WB), Immunohistochemistry (Paraffin-embedded Sections) (IHC (p)), Immunofluorescence (IF), Flow Cytometry (FACS)

Product Details

Immunogen:	This CCL2 antibody is generated from rabbits immunized with a KLH conjugated synthetic peptide between 62-89 amino acids from the C-terminal region of human CCL2.
Clone:	RB17838
Isotype:	Ig Fraction
Predicted Reactivity:	Pr
Purification:	This antibody is prepared by Saturated Ammonium Sulfate (SAS) precipitation followed by dialysis against PBS.

Target Details

Target:	CCL2
---------	------

Target Details

Alternative Name:	CCL2 (CCL2 Products)
Background:	Cytokines are a family of secreted proteins involved in immunoregulatory and inflammatory processes. CCL2 is structurally related to the CXC subfamily of cytokines. Members of this subfamily are characterized by two cysteines separated by a single amino acid. This cytokine displays chemotactic activity for monocytes and basophils but not for neutrophils or eosinophils. It has been implicated in the pathogenesis of diseases characterized by monocytic infiltrates, like psoriasis, rheumatoid arthritis and atherosclerosis. It binds to chemokine receptors CCR2 and CCR4.
Molecular Weight:	11025
Gene ID:	6347
NCBI Accession:	NP_002973
UniProt:	P13500
Pathways:	Cellular Response to Molecule of Bacterial Origin , Positive Regulation of Immune Effector Process , ER-Nucleus Signaling , Unfolded Protein Response , The Global Phosphorylation Landscape of SARS-CoV-2 Infection

Application Details

Application Notes:	IF: 1:10~50. IF: 1:10~50. WB: 1:1000. IHC-P: 1:10~50. FC: 1:10~50
Restrictions:	For Research Use only

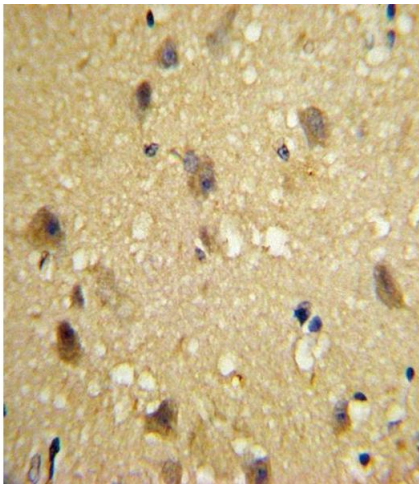
Handling

Format:	Liquid
Buffer:	Purified polyclonal antibody supplied in PBS with 0.09 % (W/V) sodium azide.
Preservative:	Sodium azide
Precaution of Use:	This product contains Sodium azide: a POISONOUS AND HAZARDOUS SUBSTANCE which should be handled by trained staff only.
Storage:	4 °C,-20 °C
Storage Comment:	Maintain refrigerated at 2-8 °C for up to 6 months. For long term storage store at -20 °C in small aliquots to prevent freeze-thaw cycles.
Expiry Date:	6 months

Publications

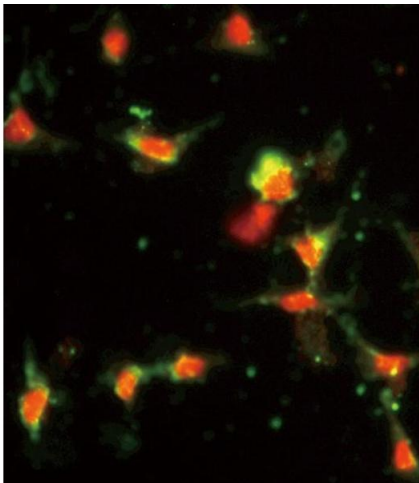
Product cited in: Bannon, Johnson, Michelhaugh, Hartley, Halter, David, Kapatos, Schmidt: "A molecular profile of cocaine abuse includes the differential expression of genes that regulate transcription, chromatin, and dopamine cell phenotype." in: **Neuropsychopharmacology : official publication of the American College of Neuropsychopharmacology**, Vol. 39, Issue 9, pp. 2191-9, (2014) ([PubMed](#)).

Images



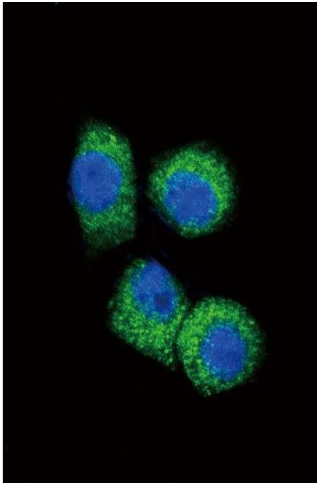
Immunohistochemistry (Paraffin-embedded Sections)

Image 1. Formalin-fixed and paraffin-embedded human brain tissue with CCL2 Antibody (C-term), which was peroxidase-conjugated to the secondary antibody, followed by DAB staining. This data demonstrates the use of this antibody for immunohistochemistry, clinical relevance has not been evaluated.



Immunofluorescence

Image 2. Immunofluorescence analysis of CCL2 Antibody (C-term) with HeLa cells. 0.025 mg/mL primary antibody was followed by FITC-conjugated goat anti-rabbit IgG (whole molecule). FITC emits green fluorescence. Red counterstaining is PI.



Immunofluorescence

Image 3. Confocal immunofluorescent analysis of CCL2 Antibody (C-term) (ABIN390653 and ABIN2840951) with HeLa cell followed by Alexa Fluor 488-conjugated goat anti-rabbit IgG (green). DAPI was used to stain the cell nuclear (blue).

Please check the [product details page](#) for more images. Overall 5 images are available for ABIN390653.