

Datasheet for ABIN390660
anti-LRG1 antibody (AA 194-223)[Go to Product page](#)

4 Images

Overview

Quantity:	400 µL
Target:	LRG1
Binding Specificity:	AA 194-223
Reactivity:	Human
Host:	Rabbit
Clonality:	Polyclonal
Conjugate:	This LRG1 antibody is un-conjugated
Application:	Western Blotting (WB), Flow Cytometry (FACS), Immunohistochemistry (Paraffin-embedded Sections) (IHC (p))

Product Details

Immunogen:	This LRG1 antibody is generated from rabbits immunized with a KLH conjugated synthetic peptide between 194-223 amino acids from the Central region of human LRG1.
Clone:	RB18421
Isotype:	Ig Fraction
Purification:	This antibody is prepared by Saturated Ammonium Sulfate (SAS) precipitation followed by dialysis against PBS.

Target Details

Target:	LRG1
Alternative Name:	LRG1 (LRG1 Products)

Target Details

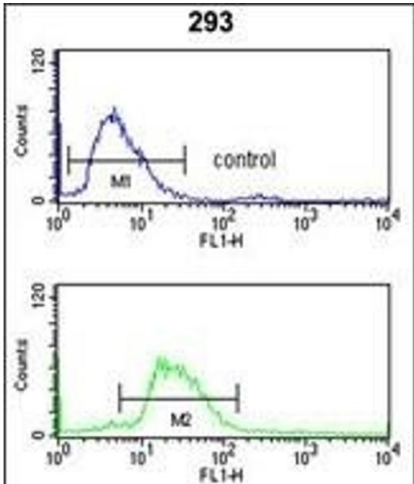
Background:	The leucine-rich repeat (LRR) family of proteins, including LRG1, have been shown to be involved in protein-protein interaction, signal transduction, and cell adhesion and development. LRG1 is expressed during granulocyte differentiation.
Gene ID:	116844
NCBI Accession:	NP_443204
UniProt:	P02750
Pathways:	Brown Fat Cell Differentiation

Application Details

Application Notes:	WB: 1:1000. WB: 1:1000. IHC-P: 1:50~100. FC: 1:10~50
Restrictions:	For Research Use only

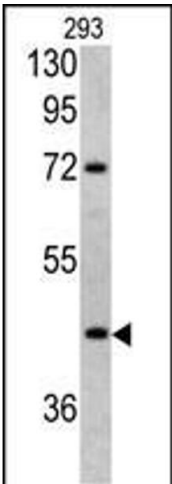
Handling

Format:	Liquid
Buffer:	Purified polyclonal antibody supplied in PBS with 0.09 % (W/V) sodium azide.
Preservative:	Sodium azide
Precaution of Use:	This product contains Sodium azide: a POISONOUS AND HAZARDOUS SUBSTANCE which should be handled by trained staff only.
Storage:	4 °C, -20 °C
Storage Comment:	Maintain refrigerated at 2-8 °C for up to 6 months. For long term storage store at -20 °C in small aliquots to prevent freeze-thaw cycles.
Expiry Date:	6 months



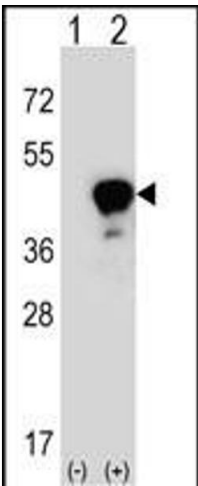
Flow Cytometry

Image 1. LRG1 Antibody (Center) (ABIN390660 and ABIN2840956) flow cytometry analysis of 293 cells (bottom histogram) compared to a negative control cell (top histogram). FITC-conjugated goat-anti-rabbit secondary antibodies were used for the analysis.



Western Blotting

Image 2. Western blot analysis of LRG1 antibody (Center) (ABIN390660 and ABIN2840956) in 293 cell line lysates (35 µg/lane). LRG1 (arrow) was detected using the purified Pab.



Western Blotting

Image 3. Western blot analysis of LRG1 (arrow) using rabbit polyclonal LRG1 Antibody (Center) (ABIN390660 and ABIN2840956). 293 cell lysates (2 µg/lane) either nontransfected (Lane 1) or transiently transfected (Lane 2) with the LRG1 gene.

Please check the [product details page](#) for more images. Overall 4 images are available for ABIN390660.