

Datasheet for ABIN390662

anti-Cytokeratin 13 antibody (N-Term)

3 Images

[Go to Product page](#)

Overview

Quantity:	400 µL
Target:	Cytokeratin 13 (KRT13)
Binding Specificity:	AA 106-138, N-Term
Reactivity:	Human
Host:	Rabbit
Clonality:	Polyclonal
Conjugate:	This Cytokeratin 13 antibody is un-conjugated
Application:	Western Blotting (WB), Immunohistochemistry (Paraffin-embedded Sections) (IHC (p)), Flow Cytometry (FACS)

Product Details

Immunogen:	This KRT13 antibody is generated from rabbits immunized with a KLH conjugated synthetic peptide between 106-138 amino acids from the N-terminal region of human KRT13.
Clone:	RB18903
Isotype:	Ig Fraction
Purification:	This antibody is prepared by Saturated Ammonium Sulfate (SAS) precipitation followed by dialysis against PBS.

Target Details

Target:	Cytokeratin 13 (KRT13)
Alternative Name:	KRT13 (KRT13 Products)

Target Details

Background: KRT13 is a member of the keratin gene family. The keratins are intermediate filament proteins responsible for the structural integrity of epithelial cells and are subdivided into cytokeratins and hair keratins. Most of the type I cytokeratins consist of acidic proteins which are arranged in pairs of heterotypic keratin chains. This type I cytokeratin is paired with keratin 4 and expressed in the suprabasal layers of non-cornified stratified epithelia. Mutations in its gene and keratin 4 have been associated with the autosomal dominant disorder White Sponge Nevus.

Molecular Weight: 49588

Gene ID: 3860

NCBI Accession: [NP_002265](#), [NP_705694](#)

UniProt: [P13646](#)

Application Details

Application Notes: WB: 1:1000. IHC-P: 1:50~100. FC: 1:10~50

Restrictions: For Research Use only

Handling

Format: Liquid

Buffer: Purified polyclonal antibody supplied in PBS with 0.09 % (W/V) sodium azide.

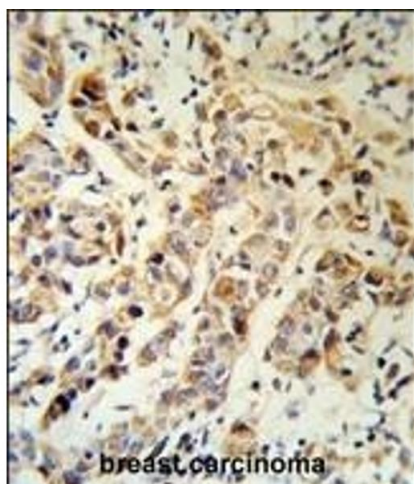
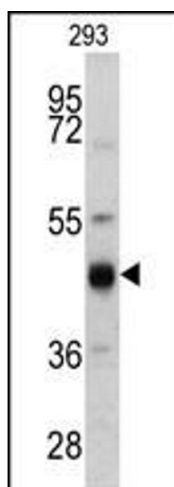
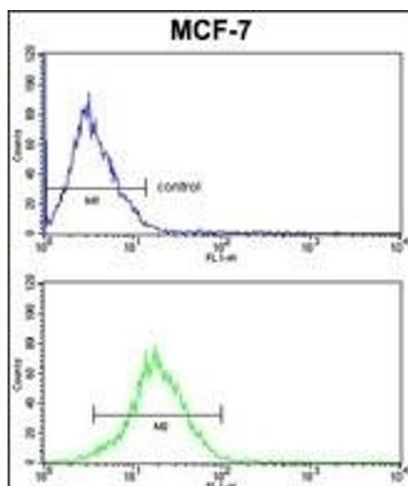
Preservative: Sodium azide

Precaution of Use: This product contains Sodium azide: a POISONOUS AND HAZARDOUS SUBSTANCE which should be handled by trained staff only.

Storage: 4 °C,-20 °C

Storage Comment: Maintain refrigerated at 2-8 °C for up to 6 months. For long term storage store at -20 °C in small aliquots to prevent freeze-thaw cycles.

Expiry Date: 6 months



Flow Cytometry

Image 1. KRT13 Antibody (N-term) (ABIN390662 and ABIN2840957) FC analysis of MCF-7 cells (bottom histogram) compared to a negative control cell (top histogram). FITC-conjugated goat-anti-rabbit secondary antibodies were used for the analysis.

Western Blotting

Image 2. Western blot analysis of KRT13 antibody (N-term) (ABIN390662 and ABIN2840957) in 293 cell line lysates (35 µg/lane). KRT13 (arrow) was detected using the purified Pab.

Immunohistochemistry (Paraffin-embedded Sections)

Image 3. KRT13 Antibody (N-term) (R) IHC analysis in formalin fixed and paraffin embedded human breast carcinoma followed by peroxidase conjugation of the secondary antibody and DAB staining. This data demonstrates the use of the KRT13 Antibody (N-term) for immunohistochemistry. Clinical relevance has not been evaluated.