

Datasheet for ABIN390676
anti-MAML3 antibody (C-Term)

3 Images

[Go to Product page](#)

Overview

Quantity:	400 µL
Target:	MAML3
Binding Specificity:	AA 640-665, C-Term
Reactivity:	Human
Host:	Rabbit
Clonality:	Polyclonal
Conjugate:	This MAML3 antibody is un-conjugated
Application:	Flow Cytometry (FACS), Western Blotting (WB), Immunohistochemistry (Paraffin-embedded Sections) (IHC (p))

Product Details

Immunogen:	This MAML3 antibody is generated from rabbits immunized with a KLH conjugated synthetic peptide between 640-665 amino acids from the C-terminal region of human MAML3.
Clone:	RB18761
Isotype:	Ig Fraction
Purification:	This antibody is prepared by Saturated Ammonium Sulfate (SAS) precipitation followed by dialysis against PBS.

Target Details

Target:	MAML3
Alternative Name:	MAML3 (MAML3 Products)

Target Details

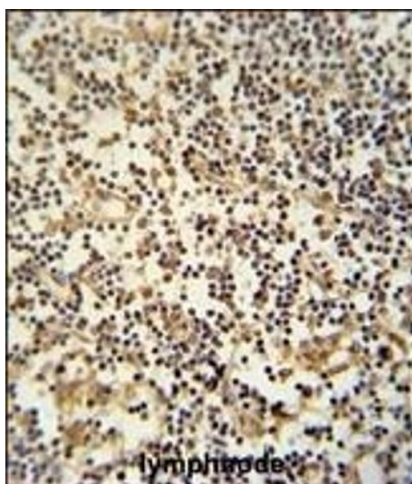
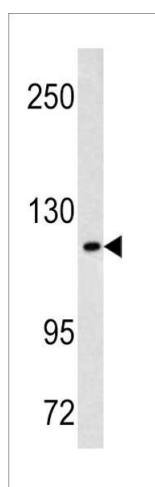
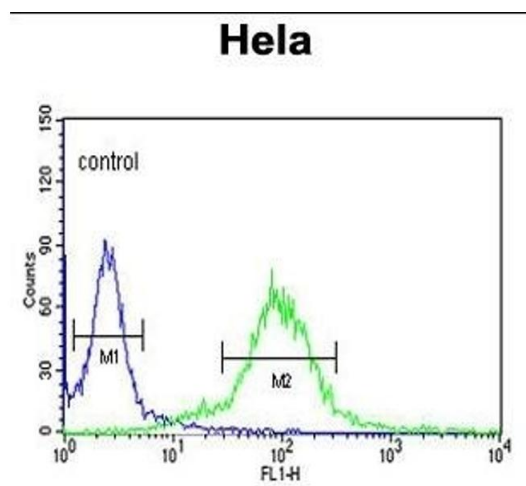
Background:	MAML3 acts as a transcriptional coactivator for NOTCH proteins. The protein has been shown to amplify NOTCH-induced transcription of HES1.
Molecular Weight:	122293
Gene ID:	55534
NCBI Accession:	NP_061187
UniProt:	Q96JK9

Application Details

Application Notes:	WB: 1:1000. IHC-P: 1:50~100. FC: 1:10~50
Restrictions:	For Research Use only

Handling

Format:	Liquid
Buffer:	Purified polyclonal antibody supplied in PBS with 0.09 % (W/V) sodium azide.
Preservative:	Sodium azide
Precaution of Use:	This product contains Sodium azide: a POISONOUS AND HAZARDOUS SUBSTANCE which should be handled by trained staff only.
Storage:	4 °C,-20 °C
Storage Comment:	Maintain refrigerated at 2-8 °C for up to 6 months. For long term storage store at -20 °C in small aliquots to prevent freeze-thaw cycles.
Expiry Date:	6 months



Flow Cytometry

Image 1. ML3 Antibody (C-term) (ABIN390676 and ABIN2840971) flow cytometric analysis of Hela cells (right histogram) compared to a negative control cell (left histogram). FITC-conjugated goat-anti-rabbit secondary antibodies were used for the analysis.

Western Blotting

Image 2. Western blot analysis of ML3 antibody (C-term) (ABIN390676 and ABIN2840971) in Hela cell line lysates (35 μ g/lane). ML3 (arrow) was detected using the purified Pab.

Immunohistochemistry (Paraffin-embedded Sections)

Image 3. ML3 Antibody (C-term) (ABIN390676 and ABIN2840971) immunohistochemistry analysis in forlin fixed and paraffin embedded hun lymphnode followed by peroxidase conjugation of the secondary antibody and DAB staining. This data demonstrates the use of the ML3 Antibody (C-term) for immunohistochemistry. Clinical relevance has not been evaluated.