

Datasheet for ABIN390679  
**anti-MCA1 antibody (C-Term)**

## 3 Images

[Go to Product page](#)

## Overview

Quantity:	400 µL
Target:	MCA1
Binding Specificity:	AA 242-268, C-Term
Reactivity:	Human
Host:	Rabbit
Clonality:	Polyclonal
Conjugate:	This MCA1 antibody is un-conjugated
Application:	Western Blotting (WB), Immunohistochemistry (Paraffin-embedded Sections) (IHC (p))

## Product Details

Immunogen:	This MCA1 antibody is generated from rabbits immunized with a KLH conjugated synthetic peptide between 242-268 amino acids from the C-terminal region of human MCA1.
Clone:	RB18767
Isotype:	Ig Fraction
Predicted Reactivity:	Ha, M
Purification:	This antibody is prepared by Saturated Ammonium Sulfate (SAS) precipitation followed by dialysis against PBS.

## Target Details

Target:	MCA1
---------	------

## Target Details

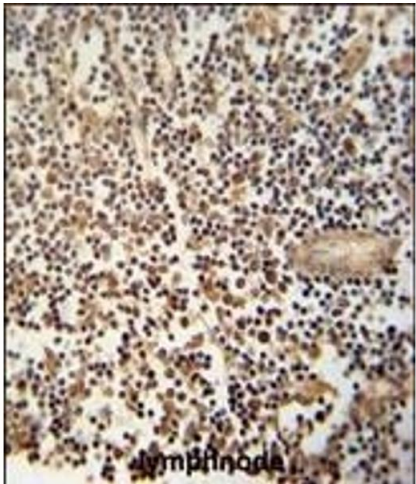
Alternative Name:	MCA1 ( <a href="#">MCA1 Products</a> )
Background:	MCA1 is a cytokine that is specifically induced by apoptosis, and it is involved in the control of angiogenesis, inflammation, and wound healing. The release of this cytokine renders the tumor-associated vasculature sensitive to tumor necrosis factor. The precursor protein is identical to the p43 subunit, which is associated with the multi-tRNA synthetase complex, and it modulates aminoacylation activity of tRNA synthetase in normal cells. This protein is also involved in the stimulation of inflammatory responses after proteolytic cleavage in tumor cells.
Molecular Weight:	34353
Gene ID:	9255
NCBI Accession:	<a href="#">NP_001135887</a> , <a href="#">NP_001135888</a> , <a href="#">NP_004748</a>
UniProt:	<a href="#">Q12904</a>

## Application Details

Application Notes:	WB: 1:1000. WB: 1:1000. IHC-P: 1:50~100
Restrictions:	For Research Use only

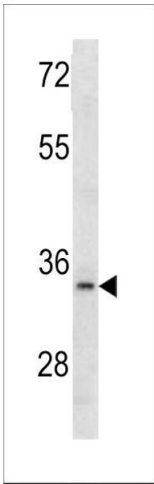
## Handling

Format:	Liquid
Buffer:	Purified polyclonal antibody supplied in PBS with 0.09 % (W/V) sodium azide.
Preservative:	Sodium azide
Precaution of Use:	This product contains Sodium azide: a POISONOUS AND HAZARDOUS SUBSTANCE which should be handled by trained staff only.
Storage:	4 °C,-20 °C
Storage Comment:	Maintain refrigerated at 2-8 °C for up to 6 months. For long term storage store at -20 °C in small aliquots to prevent freeze-thaw cycles.
Expiry Date:	6 months



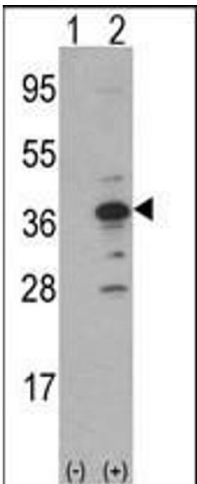
Immunohistochemistry (Paraffin-embedded Sections)

**Image 1.** MCA1 Antibody (C-term) (ABIN390679 and ABIN2840973) immunohistochemistry analysis in formalin fixed and paraffin embedded human lymphnode followed by peroxidase conjugation of the secondary antibody and DAB staining. This data demonstrates the use of the MCA1 Antibody (C-term) for immunohistochemistry. Clinical relevance has not been evaluated.



Western Blotting

**Image 2.** Western blot analysis of MCA1 antibody (C-term) (ABIN390679 and ABIN2840973) in 293 cell line lysates (35 µg/lane). MCA1 (arrow) was detected using the purified Pab.



Western Blotting

**Image 3.** Western blot analysis of MCA1 (arrow) using rabbit polyclonal MCA1 Antibody (N-term) (ABIN390679 and ABIN2840973). 293 cell lysates (2 µg/lane) either nontransfected (Lane 1) or transiently transfected with the MCA1 gene (Lane 2) (Origene Technologies).