



[Go to Product page](#)

Datasheet for ABIN390680

anti-Inhibin alpha antibody (N-Term)

4 Images

Overview

Quantity:	400 µL
Target:	Inhibin alpha (INHA)
Binding Specificity:	AA 79-108, N-Term
Reactivity:	Human, Mouse
Host:	Rabbit
Clonality:	Polyclonal
Conjugate:	This Inhibin alpha antibody is un-conjugated
Application:	Western Blotting (WB), Immunofluorescence (IF), Immunohistochemistry (Paraffin-embedded Sections) (IHC (p)), Flow Cytometry (FACS)

Product Details

Immunogen:	This INHA antibody is generated from rabbits immunized with a KLH conjugated synthetic peptide between 79-108 amino acids from the N-terminal region of human INHA.
Clone:	RB18802
Isotype:	Ig Fraction
Purification:	This antibody is purified through a protein A column, followed by peptide affinity purification.

Target Details

Target:	Inhibin alpha (INHA)
Alternative Name:	INHA (INHA Products)

Target Details

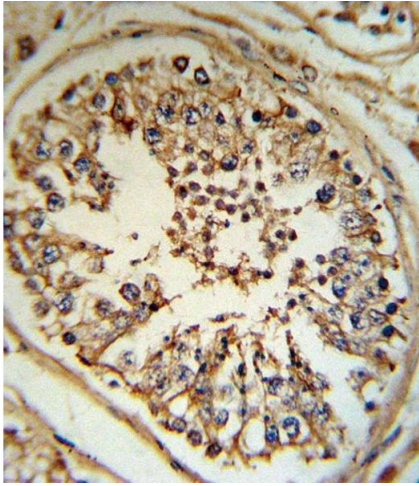
Background:	The inhibin alpha subunit joins either the beta A or beta B subunit to form a pituitary FSH secretion inhibitor. Inhibin has been shown to regulate gonadal stromal cell proliferation negatively and to have tumour-suppressor activity. In addition, serum levels of inhibin have been shown to reflect the size of granulosa-cell tumors and can therefore be used as a marker for primary as well as recurrent disease. However, in prostate cancer, expression of the inhibin alpha-subunit gene was suppressed and was not detectable in poorly differentiated tumor cells. Furthermore, because expression in gonadal and various extragonadal tissues may vary severalfold in a tissue-specific fashion, it is proposed that inhibin may be both a growth/differentiation factor and a hormone.
Molecular Weight:	39670
Gene ID:	3623
NCBI Accession:	NP_002182
UniProt:	P05111
Pathways:	Peptide Hormone Metabolism , Hormone Activity , Negative Regulation of Hormone Secretion

Application Details

Application Notes:	IF: 1:10~50. WB: 1:2000. IHC-P: 1:10~50. FC: 1:10~50
Restrictions:	For Research Use only

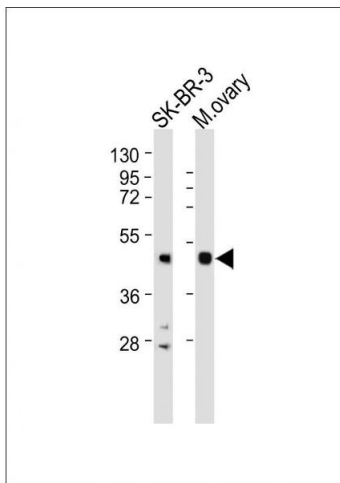
Handling

Format:	Liquid
Buffer:	Purified polyclonal antibody supplied in PBS with 0.09 % (W/V) sodium azide.
Preservative:	Sodium azide
Precaution of Use:	This product contains Sodium azide: a POISONOUS AND HAZARDOUS SUBSTANCE which should be handled by trained staff only.
Storage:	4 °C,-20 °C
Storage Comment:	Maintain refrigerated at 2-8 °C for up to 6 months. For long term storage store at -20 °C in small aliquots to prevent freeze-thaw cycles.
Expiry Date:	6 months



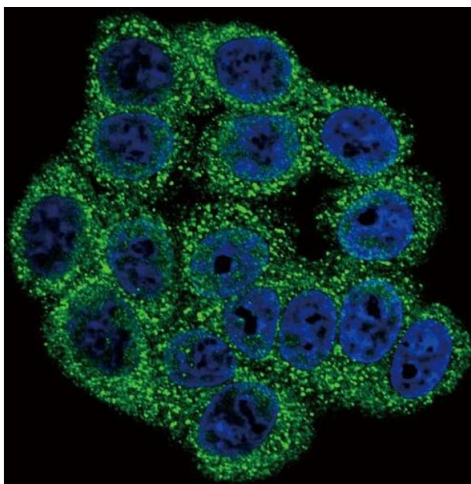
Immunohistochemistry (Paraffin-embedded Sections)

Image 1. INHA Antibody (N-term) (ABIN390680 and ABIN2840974) IHC analysis in formalin fixed and paraffin embedded human testis tissue followed by peroxidase conjugation of the secondary antibody and DAB staining. This data demonstrates the use of the INHA Antibody (N-term) for immunohistochemistry. Clinical relevance has not been evaluated.



Western Blotting

Image 2. All lanes : Anti-INHA Antibody (N-term) at 1:2000 dilution Lane 1: SK-BR-3 whole cell lysate Lane 2: Mouse ovary whole cell lysate Lysates/proteins at 20 µg per lane. Secondary Goat Anti-Rabbit IgG, (H+L), Peroxidase conjugated at 1/10000 dilution. Predicted band size : 40 kDa Blocking/Dilution buffer: 5 % NFDN/TBST.



Immunofluorescence

Image 3. Confocal immunofluorescent analysis of INHA Antibody (N-term) (ABIN390680 and ABIN2840974) with HeLa cell followed by Alexa Fluor 488-conjugated goat anti-rabbit IgG (green). DI was used to stain the cell nuclear (blue).

Please check the [product details page](#) for more images. Overall 4 images are available for ABIN390680.