

Datasheet for ABIN390685  
**anti-CPD antibody (C-Term)**[Go to Product page](#)

## 1 Image

## Overview

Quantity:	400 µL
Target:	CPD
Binding Specificity:	AA 1019-1048, C-Term
Reactivity:	Human
Host:	Rabbit
Clonality:	Polyclonal
Conjugate:	This CPD antibody is un-conjugated
Application:	Western Blotting (WB)

## Product Details

Immunogen:	This CPD antibody is generated from rabbits immunized with a KLH conjugated synthetic peptide between 1019-1048 amino acids from the C-terminal region of human CPD.
Clone:	RB19016
Isotype:	Ig Fraction
Predicted Reactivity:	M, Rat
Purification:	This antibody is prepared by Saturated Ammonium Sulfate (SAS) precipitation followed by dialysis against PBS.

## Target Details

Target:	CPD
---------	-----

## Target Details

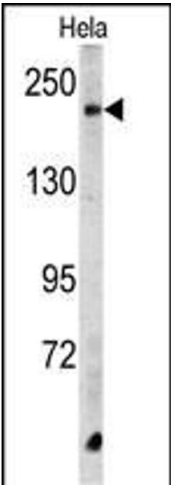
Alternative Name:	CPD ( <a href="#">CPD Products</a> )
Background:	The metallocarboxypeptidase family of enzymes is divided into 2 subfamilies based on sequence similarities. The pancreatic carboxypeptidase-like and the regulatory B-type carboxypeptidase subfamilies. Carboxypeptidase D has been identified as a regulatory B-type carboxypeptidase. CPD is a homolog of duck gp180, a hepatitis B virus-binding protein.
Molecular Weight:	152931
Gene ID:	1362
NCBI Accession:	<a href="#">NP_001186704</a> , <a href="#">NP_001295</a>
UniProt:	<a href="#">O75976</a>
Pathways:	<a href="#">Synaptic Membrane</a> , <a href="#">Regulation of G-Protein Coupled Receptor Protein Signaling</a>

## Application Details

Application Notes:	WB: 1:1000
Restrictions:	For Research Use only

## Handling

Format:	Liquid
Buffer:	Purified polyclonal antibody supplied in PBS with 0.09 % (W/V) sodium azide.
Preservative:	Sodium azide
Precaution of Use:	This product contains Sodium azide: a POISONOUS AND HAZARDOUS SUBSTANCE which should be handled by trained staff only.
Storage:	4 °C, -20 °C
Storage Comment:	Maintain refrigerated at 2-8 °C for up to 6 months. For long term storage store at -20 °C in small aliquots to prevent freeze-thaw cycles.
Expiry Date:	6 months



Western Blotting

**Image 1.** Western blot analysis of CPD Antibody (C-term) (ABIN390685 and ABIN2840976) in HeLa cell line lysates (35 µg/lane). CPD (arrow) was detected using the purified Pab.