

Datasheet for ABIN390689
anti-FBP2 antibody (C-Term)[Go to Product page](#)

1 Image

Overview

Quantity:	400 µL
Target:	FBP2
Binding Specificity:	AA 250-281, C-Term
Reactivity:	Human, Mouse
Host:	Rabbit
Clonality:	Polyclonal
Conjugate:	This FBP2 antibody is un-conjugated
Application:	Western Blotting (WB)

Product Details

Immunogen:	This FBP2 antibody is generated from rabbits immunized with a KLH conjugated synthetic peptide between 250-281 amino acids from the C-terminal region of human FBP2.
Clone:	RB19301
Isotype:	Ig Fraction
Predicted Reactivity:	B, Rb
Purification:	This antibody is prepared by Saturated Ammonium Sulfate (SAS) precipitation followed by dialysis against PBS.

Target Details

Target:	FBP2
---------	------

Target Details

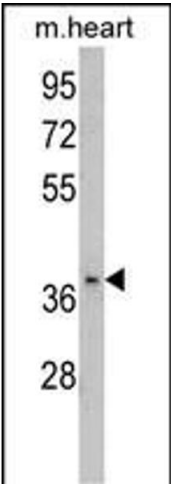
Alternative Name:	FBP2 (FBP2 Products)
Background:	FBP2 is a gluconeogenesis regulatory enzyme which catalyzes the hydrolysis of fructose 1,6-bisphosphate to fructose 6-phosphate and inorganic phosphate.
Molecular Weight:	36743
Gene ID:	8789
NCBI Accession:	NP_003828
UniProt:	O00757

Application Details

Application Notes:	WB: 1:1000
Restrictions:	For Research Use only

Handling

Format:	Liquid
Buffer:	Purified polyclonal antibody supplied in PBS with 0.09 % (W/V) sodium azide.
Preservative:	Sodium azide
Precaution of Use:	This product contains Sodium azide: a POISONOUS AND HAZARDOUS SUBSTANCE which should be handled by trained staff only.
Storage:	4 °C, -20 °C
Storage Comment:	Maintain refrigerated at 2-8 °C for up to 6 months. For long term storage store at -20 °C in small aliquots to prevent freeze-thaw cycles.
Expiry Date:	6 months



Western Blotting

Image 1. Western blot analysis of FBP2 Antibody (C-term) (ABIN390689 and ABIN2840979) in mouse heart tissue lysates (35 µg/lane). FBP2 (arrow) was detected using the purified Pab.