

Datasheet for ABIN390700

**anti-Aminomethyltransferase antibody (N-Term)**

3 Images

[Go to Product page](#)

## Overview

Quantity:	400 µL
Target:	Aminomethyltransferase (AMT)
Binding Specificity:	AA 19-45, N-Term
Reactivity:	Human
Host:	Rabbit
Clonality:	Polyclonal
Conjugate:	This Aminomethyltransferase antibody is un-conjugated
Application:	Western Blotting (WB), Flow Cytometry (FACS), Immunohistochemistry (Paraffin-embedded Sections) (IHC (p))

## Product Details

Immunogen:	This AMT antibody is generated from rabbits immunized with a KLH conjugated synthetic peptide between 19-45 amino acids from the N-terminal region of human AMT.
Clone:	RB19704
Isotype:	Ig Fraction
Predicted Reactivity:	M
Purification:	This antibody is prepared by Saturated Ammonium Sulfate (SAS) precipitation followed by dialysis against PBS.

## Target Details

Target:	Aminomethyltransferase (AMT)
---------	------------------------------

## Target Details

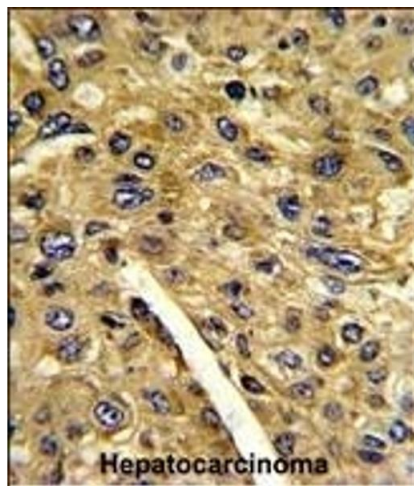
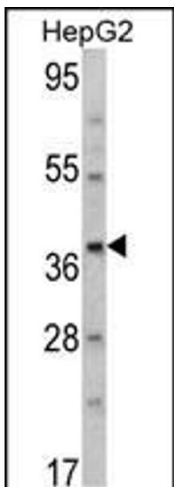
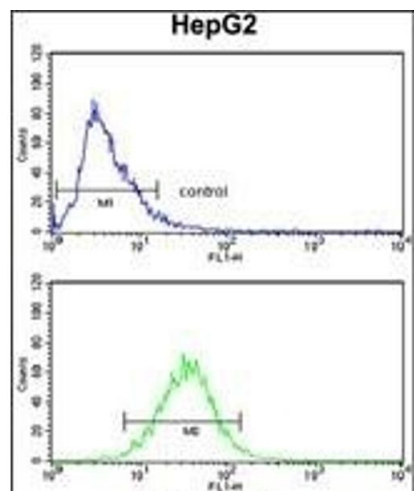
Alternative Name:	AMT ( <a href="#">AMT Products</a> )
Background:	The enzyme system for cleavage of glycine (glycine cleavage system, EC 2.1.2.10), which is confined to the mitochondria, is composed of 4 protein components: P protein (a pyridoxal phosphate-dependent glycine decarboxylase, MIM 238300), H protein (a lipoic acid-containing protein, MIM 238330), T protein (a tetrahydrofolate-requiring enzyme), and L protein (a lipoamide dehydrogenase, MIM 238331). Glycine encephalopathy (GCE, MIM 605899) may be due to a defect in any one of these enzymes.
Molecular Weight:	43946
Gene ID:	275
NCBI Accession:	<a href="#">NP_000472</a> , <a href="#">NP_001158182</a> , <a href="#">NP_001158183</a> , <a href="#">NP_001158184</a>
UniProt:	<a href="#">P48728</a>

## Application Details

Application Notes:	WB: 1:1000. IHC-P: 1:50~100. FC: 1:10~50
Restrictions:	For Research Use only

## Handling

Format:	Liquid
Buffer:	Purified polyclonal antibody supplied in PBS with 0.09 % (W/V) sodium azide.
Preservative:	Sodium azide
Precaution of Use:	This product contains Sodium azide: a POISONOUS AND HAZARDOUS SUBSTANCE which should be handled by trained staff only.
Storage:	4 °C,-20 °C
Storage Comment:	Maintain refrigerated at 2-8 °C for up to 6 months. For long term storage store at -20 °C in small aliquots to prevent freeze-thaw cycles.
Expiry Date:	6 months



Flow Cytometry

**Image 1.** T Antibody (N-term) (ABIN390700 and ABIN2840986) flow cytometry analysis of HepG2 cells (bottom histogr) compared to a negative control cell (top histogr). FITC-conjugated goat-anti-rabbit secondary antibodies were used for the analysis.

Western Blotting

**Image 2.** Western blot analysis of T Antibody (N-term) (ABIN390700 and ABIN2840986) in HepG2 cell line lysates (35 µg/lane). T (arrow) was detected using the purified Pab.

Immunohistochemistry (Paraffin-embedded Sections)

**Image 3.** Formalin-fixed and paraffin-embedded human hepatocarcinoma reacted with T Antibody (N-term), which was peroxidase-conjugated to the secondary antibody, followed by DAB staining. This data demonstrates the use of this antibody for immunohistochemistry, clinical relevance has not been evaluated.