

Datasheet for ABIN390705  
**anti-SPARC antibody (C-Term)**[Go to Product page](#)

## 4 Images

## Overview

Quantity:	400 µL
Target:	SPARC
Binding Specificity:	AA 224-251, C-Term
Reactivity:	Human
Host:	Rabbit
Clonality:	Polyclonal
Conjugate:	This SPARC antibody is un-conjugated
Application:	Western Blotting (WB), Flow Cytometry (FACS), Immunohistochemistry (Paraffin-embedded Sections) (IHC (p))

## Product Details

Immunogen:	This SPARC antibody is generated from rabbits immunized with a KLH conjugated synthetic peptide between 224-251 amino acids from the C-terminal region of human SPARC.
Clone:	RB19869
Isotype:	Ig Fraction
Predicted Reactivity:	B, C, M, Pig, Rb, Rat, X
Purification:	This antibody is prepared by Saturated Ammonium Sulfate (SAS) precipitation followed by dialysis against PBS.

## Target Details

Target:	SPARC
---------	-------

## Target Details

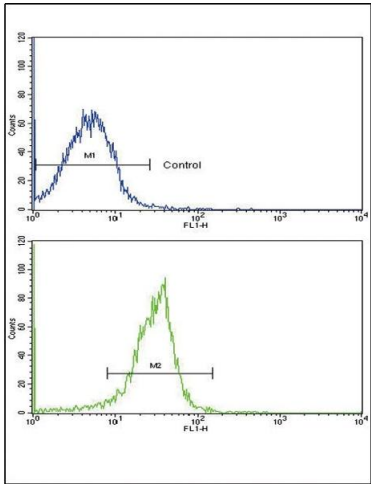
Alternative Name:	SPARC ( <a href="#">SPARC Products</a> )
Background:	Secreted protein acidic and rich in cysteine/osteonectin/BM40, or SPARC, is a matrix-associated protein that elicits changes in cell shape, inhibits cell-cycle progression, and influences the synthesis of extracellular matrix (ECM).
Molecular Weight:	34632
Gene ID:	6678
NCBI Accession:	<a href="#">NP_003109</a>
UniProt:	<a href="#">P09486</a>
Pathways:	<a href="#">Autophagy</a>

## Application Details

Application Notes:	WB: 1:1000. WB: 1:1000. IHC-P: 1:10~50. FC: 1:10~50
Restrictions:	For Research Use only

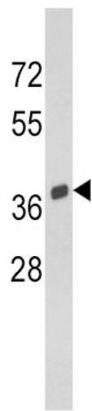
## Handling

Format:	Liquid
Buffer:	Purified polyclonal antibody supplied in PBS with 0.09 % (W/V) sodium azide.
Preservative:	Sodium azide
Precaution of Use:	This product contains Sodium azide: a POISONOUS AND HAZARDOUS SUBSTANCE which should be handled by trained staff only.
Storage:	4 °C,-20 °C
Storage Comment:	Maintain refrigerated at 2-8 °C for up to 6 months. For long term storage store at -20 °C in small aliquots to prevent freeze-thaw cycles.
Expiry Date:	6 months



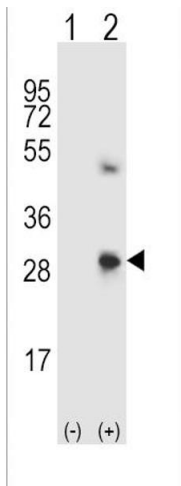
### Flow Cytometry

**Image 1.** Flow cytometric analysis of wdr cells using SRC Antibody (C-term)(bottom histogram) comred to a negative control cell (top histogram). FITC-conjugated goat-anti-rabbit secondary antibodies were used for the analysis.



### Western Blotting

**Image 2.** Western blot analysis of SRC Antibody (C-term) (ABIN390705 and ABIN2840989) in Y79 cell line lysates (35 µg/lane). SRC (arrow) was detected using the purified b.



### Western Blotting

**Image 3.** Western blot analysis of SRC (arrow) using rabbit polyclonal SRC Antibody (C-term) (ABIN390705 and ABIN2840989). 293 cell lysates (2 µg/lane) either nontransfected (Lane 1) or transiently transfected (Lane 2) with the SRC gene.

Please check the [product details page](#) for more images. Overall 4 images are available for ABIN390705.