

Datasheet for ABIN390719

**anti-M-CSF/CSF1 antibody (AA 230-257)**[Go to Product page](#)

## 4 Images

## Overview

|                      |  |
|----------------------|--|
| Quantity:            | 400 µL   |
| Target:              | M-CSF/CSF1 (CSF1)  |
| Binding Specificity: | AA 230-257   |
| Reactivity:          | Human  |
| Host:                | Rabbit   |
| Clonality:           | Polyclonal   |
| Conjugate:           | This M-CSF/CSF1 antibody is un-conjugated  |
| Application:         | Western Blotting (WB), Immunohistochemistry (Paraffin-embedded Sections) (IHC (p)), Immunofluorescence (IF), Flow Cytometry (FACS) |

## Product Details

|                       |   |
|-----------------------|---|
| Immunogen:            | This M-CSF antibody is generated from rabbits immunized with a KLH conjugated synthetic peptide between 230-257 amino acids from the Central region of human M-CSF. |
| Clone:                | RB18764   |
| Isotype:              | Ig Fraction   |
| Predicted Reactivity: | M, Rat  |
| Purification:         | This antibody is prepared by Saturated Ammonium Sulfate (SAS) precipitation followed by dialysis against PBS.   |

## Target Details

|         |                   |
|---------|-------------------|
| Target: | M-CSF/CSF1 (CSF1) |
|---------|-------------------|

## Target Details

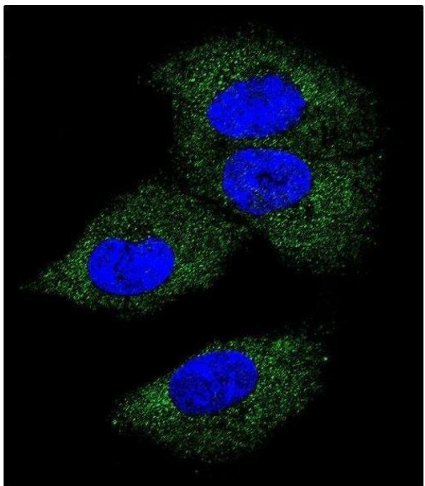
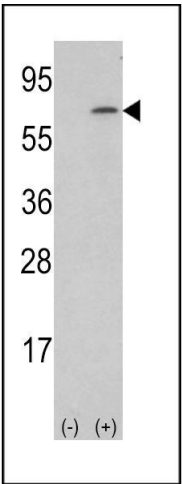
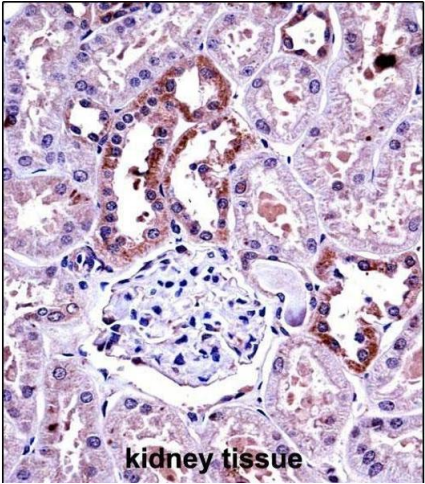
|                   |  |
|-------------------|--|
| Alternative Name: | M-CSF ( <a href="#">CSF1 Products</a> )  |
| Background:       | CSF1 is a cytokine that controls the production, differentiation, and function of macrophages. The active form of the protein is found extracellularly as a disulfide-linked homodimer, and is thought to be produced by proteolytic cleavage of membrane-bound precursors. This protein may be involved in development of the placenta. |
| Molecular Weight: | 60179  |
| Gene ID:          | 1435   |
| NCBI Accession:   | <a href="#">NP_000748</a> , <a href="#">NP_757349</a> , <a href="#">NP_757350</a> , <a href="#">NP_757351</a>  |
| UniProt:          | <a href="#">P09603</a>   |
| Pathways:         | <a href="#">RTK Signaling</a>  |

## Application Details

|                    |  |
|--------------------|--|
| Application Notes: | IF: 1:10~50. WB: 1:1000. IHC-P: 1:10~50. FC: 1:10~50 |
| Restrictions:      | For Research Use only                                |

## Handling

|                    |  |
|--------------------|--|
| Format:            | Liquid   |
| Buffer:            | Purified polyclonal antibody supplied in PBS with 0.09 % (W/V) sodium azide.   |
| Preservative:      | Sodium azide   |
| Precaution of Use: | This product contains Sodium azide: a POISONOUS AND HAZARDOUS SUBSTANCE which should be handled by trained staff only.                     |
| Storage:           | 4 °C, -20 °C   |
| Storage Comment:   | Maintain refrigerated at 2-8 °C for up to 6 months. For long term storage store at -20 °C in small aliquots to prevent freeze-thaw cycles. |
| Expiry Date:       | 6 months   |



### Immunohistochemistry (Paraffin-embedded Sections)

**Image 1.** M-CSF Antibody (Center) ((ABIN390719 and ABIN2840996))immunohistochemistry analysis in formalin fixed and paraffin embedded human kidney tissue followed by peroxidase conjugation of the secondary antibody and DAB staining.This data demonstrates the use of M-CSF Antibody (Center) for immunohistochemistry. Clinical relevance has not been evaluated.

### Western Blotting

**Image 2.** Western blot analysis of lysate from human placenta tissue lysate, using M-CSF Antibody (Center) (ABIN390719 and ABIN2840996). (ABIN390719 and ABIN2840996) was diluted at 1:1000 at each lane. A goat anti-rabbit IgG H&L(HRP) at 1:5000 dilution was used as the secondary antibody. Lysate at 35 µg per lane.

### Immunofluorescence

**Image 3.** Confocal immunofluorescent analysis of M-CSF Antibody (Center) (ABIN390719 and ABIN2840996) with MDA-M cell followed by Alexa Fluor 488-conjugated goat anti-rabbit IgG (green).DI was used to stain the cell nuclear (blue).

Please check the [product details page](#) for more images. Overall 4 images are available for ABIN390719.