



[Go to Product page](#)

Datasheet for ABIN390731

## anti-ITM2A antibody (N-Term)

### 3 Images

#### Overview

Quantity:	400 µL
Target:	ITM2A
Binding Specificity:	AA 22-49, N-Term
Reactivity:	Human
Host:	Rabbit
Clonality:	Polyclonal
Conjugate:	This ITM2A antibody is un-conjugated
Application:	Western Blotting (WB), Flow Cytometry (FACS)

#### Product Details

Immunogen:	This ITM2A antibody is generated from rabbits immunized with a KLH conjugated synthetic peptide between 22-49 amino acids from the N-terminal region of human ITM2A.
Clone:	RB20556
Isotype:	Ig Fraction
Purification:	This antibody is prepared by Saturated Ammonium Sulfate (SAS) precipitation followed by dialysis against PBS.

#### Target Details

Target:	ITM2A
Alternative Name:	ITM2A ( <a href="#">ITM2A Products</a> )

## Target Details

---

Background:	ITM2A is induced during thymocyte selection and T cell activation and causes downregulation of CD8 when overexpressed in CD4(+)CD8(+) double positive thymocytes.
Molecular Weight:	29741
Gene ID:	9452
NCBI Accession:	<a href="#">NP_001165052</a> , <a href="#">NP_004858</a>
UniProt:	<a href="#">O43736</a>

## Application Details

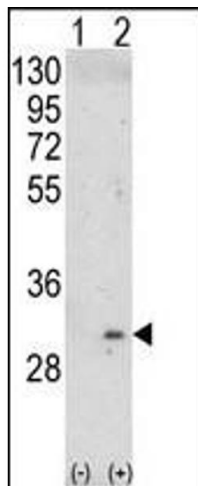
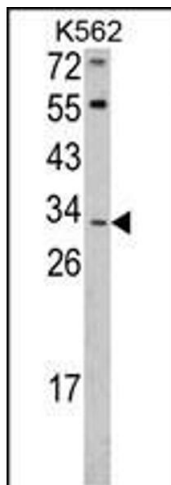
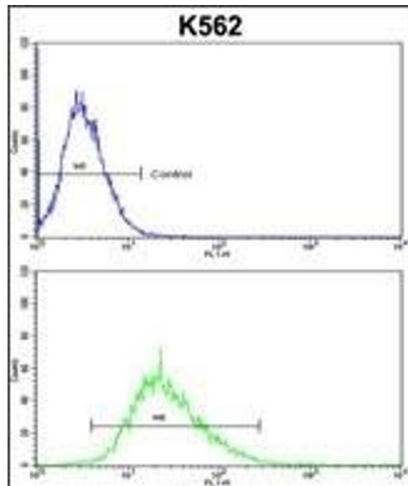
---

Application Notes:	WB: 1:1000. WB: 1:1000. FC: 1:10~50
Restrictions:	For Research Use only

## Handling

---

Format:	Liquid
Buffer:	Purified polyclonal antibody supplied in PBS with 0.09 % (W/V) sodium azide.
Preservative:	Sodium azide
Precaution of Use:	This product contains Sodium azide: a POISONOUS AND HAZARDOUS SUBSTANCE which should be handled by trained staff only.
Storage:	4 °C,-20 °C
Storage Comment:	Maintain refrigerated at 2-8 °C for up to 6 months. For long term storage store at -20 °C in small aliquots to prevent freeze-thaw cycles.
Expiry Date:	6 months



### Flow Cytometry

**Image 1.** ITM2A Antibody (N-term) (ABIN390731 and ABIN2841002) flow cytometric analysis of k562 cells (bottom histogram) compared to a negative control cell (top histogram). FITC-conjugated goat-anti-rabbit secondary antibodies were used for the analysis.

### Western Blotting

**Image 2.** Western blot analysis of ITM2A Antibody (N-term) (ABIN390731 and ABIN2841002) in K562 cell line lysates (35 µg/lane). ITM2A (arrow) was detected using the purified Pab.

### Western Blotting

**Image 3.** Western blot analysis of ITM2A (arrow) using rabbit polyclonal ITM2A Antibody (N-term) (ABIN390731 and ABIN2841002). 293 cell lysates (2 µg/lane) either nontransfected (Lane 1) or transiently transfected with the ITM2A gene (Lane 2).