

Datasheet for ABIN390740
anti-GATA2 antibody (C-Term)

3 Images

[Go to Product page](#)

Overview

Quantity:	400 µL
Target:	GATA2
Binding Specificity:	AA 380-407, C-Term
Reactivity:	Human
Host:	Rabbit
Clonality:	Polyclonal
Conjugate:	This GATA2 antibody is un-conjugated
Application:	Western Blotting (WB), Flow Cytometry (FACS)

Product Details

Immunogen:	This GATA2 antibody is generated from rabbits immunized with a KLH conjugated synthetic peptide between 380-407 amino acids from the C-terminal region of human GATA2.
Clone:	RB20663
Isotype:	Ig Fraction
Predicted Reactivity:	C
Purification:	This antibody is prepared by Saturated Ammonium Sulfate (SAS) precipitation followed by dialysis against PBS.

Target Details

Target:	GATA2
---------	-------

Target Details

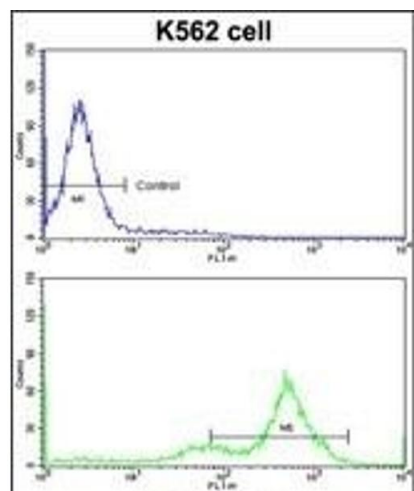
Alternative Name:	GATA2 (GATA2 Products)
Background:	GATA2 is a member of the GATA family of zinc-finger transcription factors that are named for the consensus nucleotide sequence they bind in the promoter regions of target genes. This protein plays an essential role in regulating transcription of genes involved in the development and proliferation of hematopoietic and endocrine cell lineages.
Molecular Weight:	50500
Gene ID:	2624
NCBI Accession:	NP_001139133 , NP_001139134 , NP_116027
UniProt:	P23769
Pathways:	Stem Cell Maintenance

Application Details

Application Notes:	WB: 1:1000. WB: 1:1000. FC: 1:10~50
Restrictions:	For Research Use only

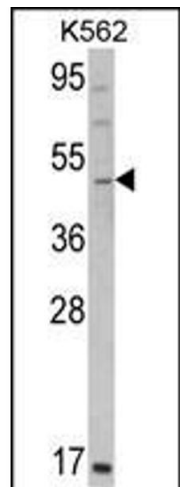
Handling

Format:	Liquid
Buffer:	Purified polyclonal antibody supplied in PBS with 0.09 % (W/V) sodium azide.
Preservative:	Sodium azide
Precaution of Use:	This product contains Sodium azide: a POISONOUS AND HAZARDOUS SUBSTANCE which should be handled by trained staff only.
Storage:	4 °C, -20 °C
Storage Comment:	Maintain refrigerated at 2-8 °C for up to 6 months. For long term storage store at -20 °C in small aliquots to prevent freeze-thaw cycles.
Expiry Date:	6 months



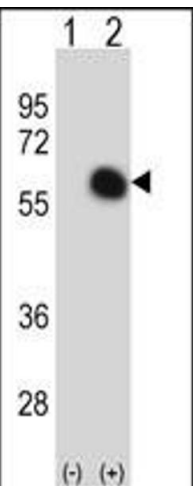
Flow Cytometry

Image 1. Flow cytometric analysis of K562 cells using GATA2 Antibody (C-term)(bottom histogram) compared to a negative control cell (top histogram)FITC-conjugated goat-anti-rabbit secondary antibodies were used for the analysis.



Western Blotting

Image 2. Western blot analysis of GATA2 Antibody (C-term) (ABIN390740 and ABIN2841005) in K562 cell line lysates (35 µg/lane). GATA2 (arrow) was detected using the purified Pab.



Western Blotting

Image 3. Western blot analysis of GATA2 (arrow) using rabbit polyclonal GATA2 Antibody (C-term) (ABIN390740 and ABIN2841005). 293 cell lysates (2 µg/lane) either nontransfected (Lane 1) or transiently transfected (Lane 2) with the GATA2 gene.