

Datasheet for ABIN390752

**anti-Apolipoprotein L 4 antibody (AA 258-290)**

3 Images

[Go to Product page](#)

## Overview

Quantity:	400 µL
Target:	Apolipoprotein L 4 (APOL4)
Binding Specificity:	AA 258-290
Reactivity:	Human
Host:	Rabbit
Clonality:	Polyclonal
Conjugate:	This Apolipoprotein L 4 antibody is un-conjugated
Application:	Western Blotting (WB), Immunohistochemistry (Paraffin-embedded Sections) (IHC (p)), Flow Cytometry (FACS)

## Product Details

Immunogen:	This APOL4 antibody is generated from rabbits immunized with a KLH conjugated synthetic peptide between 258-290 amino acids from the Central region of human APOL4.
Clone:	RB19165
Isotype:	Ig Fraction
Purification:	This antibody is prepared by Saturated Ammonium Sulfate (SAS) precipitation followed by dialysis against PBS.

## Target Details

Target:	Apolipoprotein L 4 (APOL4)
Alternative Name:	APOL4 ( <a href="#">APOL4 Products</a> )

## Target Details

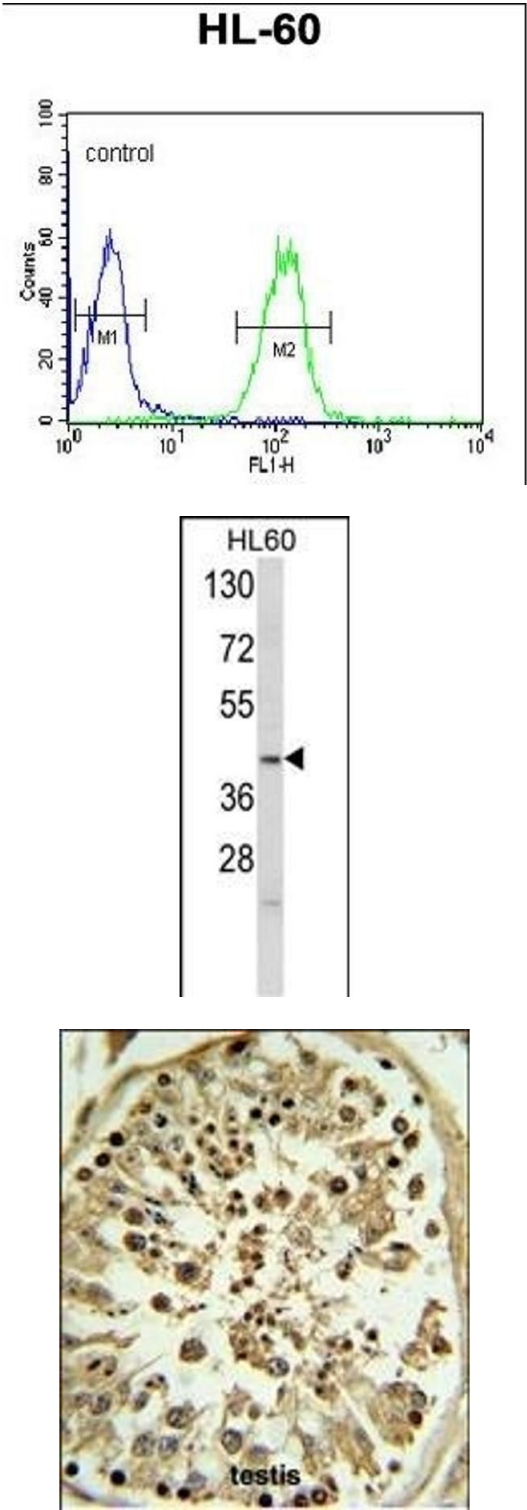
Background:	APOL4 is a member of the apolipoprotein L family and may play a role in lipid exchange and transport throughout the body, as well as in reverse cholesterol transport from peripheral cells to the liver.
Molecular Weight:	39164
Gene ID:	80832
NCBI Accession:	<a href="#">NP_085146</a> , <a href="#">NP_663693</a>
UniProt:	<a href="#">Q9BPW4</a>

## Application Details

Application Notes:	WB: 1:1000. IHC-P: 1:50~100. FC: 1:10~50
Restrictions:	For Research Use only

## Handling

Format:	Liquid
Buffer:	Purified polyclonal antibody supplied in PBS with 0.09 % (W/V) sodium azide.
Preservative:	Sodium azide
Precaution of Use:	This product contains Sodium azide: a POISONOUS AND HAZARDOUS SUBSTANCE which should be handled by trained staff only.
Storage:	4 °C, -20 °C
Storage Comment:	Maintain refrigerated at 2-8 °C for up to 6 months. For long term storage store at -20 °C in small aliquots to prevent freeze-thaw cycles.
Expiry Date:	6 months



### Flow Cytometry

**Image 1.** OL4 Antibody (Center ) 6783c flow cytometric analysis of HL-60 cells (right histogram) compared to a negative control cell (left histogram).FITC-conjugated goat-anti-rabbit secondary antibodies were used for the analysis.

### Western Blotting

**Image 2.** Western blot analysis of OL4 Antibody (Center ) 6783c in HL60 cell line lysates (35 µg/lane). OL4 (arrow) was detected using the purified Pab.

### Immunohistochemistry (Paraffin-embedded Sections)

**Image 3.** OL4 Antibody (Center ) 6783c IHC analysis in formalin fixed and paraffin embedded human testis tissue followed by peroxidase conjugation of the secondary antibody and DAB staining. This data demonstrates the use of the OL4 Antibody (Center ) for immunohistochemistry. Clinical relevance has not been evaluated.