

Datasheet for ABIN390757
anti-CRHR2 antibody (N-Term)

3 Images

[Go to Product page](#)

Overview

Quantity:	400 µL
Target:	CRHR2
Binding Specificity:	AA 84-114, N-Term
Reactivity:	Human, Mouse
Host:	Rabbit
Clonality:	Polyclonal
Conjugate:	This CRHR2 antibody is un-conjugated
Application:	Western Blotting (WB), Flow Cytometry (FACS), Immunohistochemistry (Paraffin-embedded Sections) (IHC (p))

Product Details

Immunogen:	This CRHR2 antibody is generated from rabbits immunized with a KLH conjugated synthetic peptide between 84-114 amino acids from the N-terminal region of human CRHR2.
Clone:	RB19233
Isotype:	Ig Fraction
Predicted Reactivity:	Rat
Purification:	This antibody is prepared by Saturated Ammonium Sulfate (SAS) precipitation followed by dialysis against PBS.

Target Details

Target:	CRHR2
---------	-------

Target Details

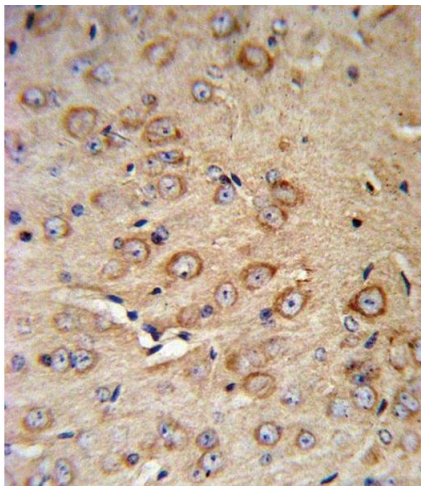
Alternative Name:	CRHR2 (CRHR2 Products)
Background:	CRHR2 is a receptor for corticotropin releasing factor. It shows high-affinity CRF binding. Also binds to urocortin I, II and III. The activity of this receptor is mediated by G proteins which activate adenylyl cyclase.
Molecular Weight:	47688
Gene ID:	1395
NCBI Accession:	NP_001189404 , NP_001189410 , NP_001189411 , NP_001189412 , NP_001874
UniProt:	Q13324
Pathways:	Negative Regulation of Hormone Secretion , cAMP Metabolic Process , Feeding Behaviour

Application Details

Application Notes:	WB: 1:1000. IHC-P: 1:10~50. FC: 1:10~50
Restrictions:	For Research Use only

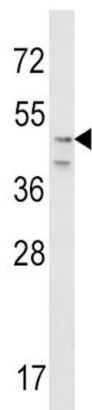
Handling

Format:	Liquid
Buffer:	Purified polyclonal antibody supplied in PBS with 0.09 % (W/V) sodium azide.
Preservative:	Sodium azide
Precaution of Use:	This product contains Sodium azide: a POISONOUS AND HAZARDOUS SUBSTANCE which should be handled by trained staff only.
Storage:	4 °C, -20 °C
Storage Comment:	Maintain refrigerated at 2-8 °C for up to 6 months. For long term storage store at -20 °C in small aliquots to prevent freeze-thaw cycles.
Expiry Date:	6 months



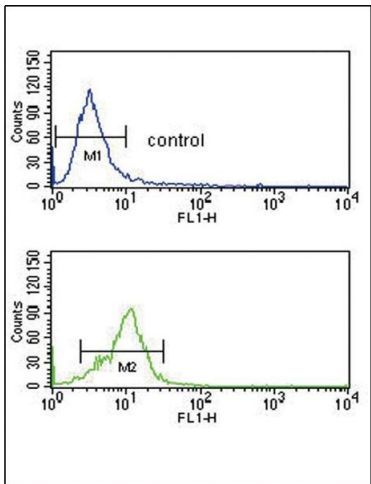
Immunohistochemistry (Paraffin-embedded Sections)

Image 1. CRHR2 Antibody (N-term) (ABIN390757 and ABIN2841015) IHC analysis in formalin fixed and paraffin embedded mouse brain tissue followed by peroxidase conjugation of the secondary antibody and DAB staining. This data demonstrates the use of the CRHR2 Antibody (N-term) for immunohistochemistry. Clinical relevance has not been evaluated.



Western Blotting

Image 2. Western blot analysis of CRHR2 Antibody (N-term) (ABIN390757 and ABIN2841015) in NIH-3T3 cell line lysates (35 µg/lane). CRHR2 (arrow) was detected using the purified Pab.



Flow Cytometry

Image 3. CRHR2 Antibody (N-term) (ABIN390757 and ABIN2841015) flow cytometry analysis of K562 cells (bottom histogram) compared to a negative control cell (top histogram). FITC-conjugated goat-anti-rabbit secondary antibodies were used for the analysis.