



[Go to Product page](#)

Datasheet for ABIN390758  
**anti-CRHR2 antibody (AA 243-272)**

4 Images

Overview

Quantity:	400 µL
Target:	CRHR2
Binding Specificity:	AA 243-272
Reactivity:	Human
Host:	Rabbit
Clonality:	Polyclonal
Conjugate:	This CRHR2 antibody is un-conjugated
Application:	Western Blotting (WB), Flow Cytometry (FACS), Immunohistochemistry (Paraffin-embedded Sections) (IHC (p)), Immunofluorescence (IF)

Product Details

Immunogen:	This CRHR2 antibody is generated from rabbits immunized with a KLH conjugated synthetic peptide between 243-272 amino acids from the Central region of human CRHR2.
Clone:	RB19234
Isotype:	Ig Fraction
Predicted Reactivity:	Rat
Purification:	This antibody is prepared by Saturated Ammonium Sulfate (SAS) precipitation followed by dialysis against PBS.

Target Details

Target:	CRHR2
---------	-------

## Target Details

---

Alternative Name:	CRHR2 ( <a href="#">CRHR2 Products</a> )
Background:	CRHR2 is a receptor for corticotropin releasing factor. It Shows high-affinity CRF binding. Also binds to urocortin I, II and III. The activity of this receptor is mediated by G proteins which activate adenylyl cyclase.
Molecular Weight:	47688
Gene ID:	1395
NCBI Accession:	<a href="#">NP_001189404</a> , <a href="#">NP_001189410</a> , <a href="#">NP_001189411</a> , <a href="#">NP_001189412</a> , <a href="#">NP_001874</a>
UniProt:	<a href="#">Q13324</a>
Pathways:	<a href="#">Negative Regulation of Hormone Secretion</a> , <a href="#">cAMP Metabolic Process</a> , <a href="#">Feeding Behaviour</a>

## Application Details

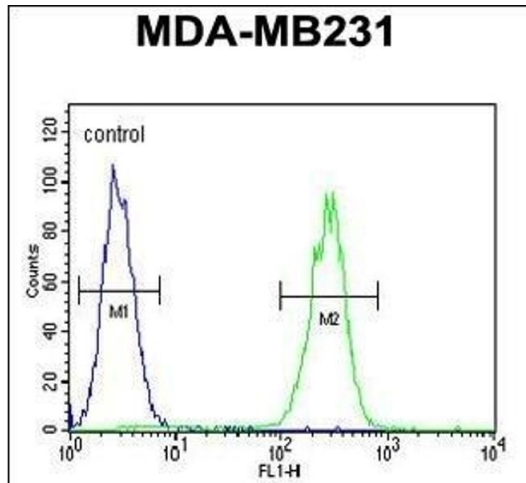
---

Application Notes:	IF: 1:10~50. WB: 1:1000. IHC-P: 1:50~100. FC: 1:10~50
Restrictions:	For Research Use only

## Handling

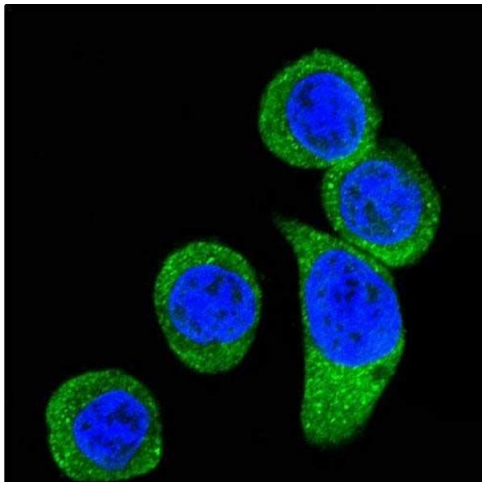
---

Format:	Liquid
Buffer:	Purified polyclonal antibody supplied in PBS with 0.09 % (W/V) sodium azide.
Preservative:	Sodium azide
Precaution of Use:	This product contains Sodium azide: a POISONOUS AND HAZARDOUS SUBSTANCE which should be handled by trained staff only.
Storage:	4 °C, -20 °C
Storage Comment:	Maintain refrigerated at 2-8 °C for up to 6 months. For long term storage store at -20 °C in small aliquots to prevent freeze-thaw cycles.
Expiry Date:	6 months



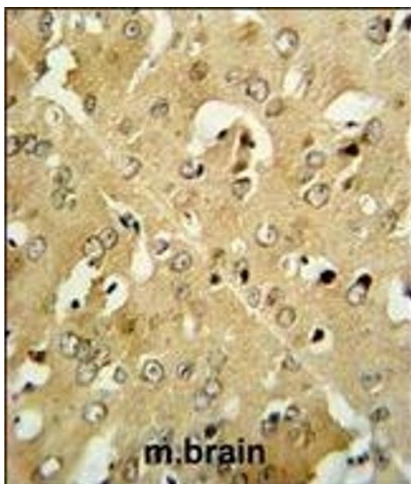
### Flow Cytometry

**Image 1.** CRHR2 Antibody (Center) (ABIN390758 and ABIN2841016) flow cytometric analysis of MDA-M cells (right histogram) compared to a negative control cell (left histogram). FITC-conjugated goat-anti-rabbit secondary antibodies were used for the analysis.



### Immunofluorescence

**Image 2.** Confocal immunofluorescent analysis of CRHR2 Antibody (Center) (ABIN390758 and ABIN2841016) with HeLa cells followed by Alexa Fluor 488-conjugated goat anti-rabbit IgG (green). DAPI was used to stain the cell nuclei (blue).



### Immunohistochemistry (Paraffin-embedded Sections)

**Image 3.** CRHR2 Antibody (Center) (ABIN390758 and ABIN2841016) IHC analysis in formalin fixed and paraffin embedded mouse brain tissue followed by peroxidase conjugation of the secondary antibody and DAB staining. This data demonstrates the use of the CRHR2 Antibody (Center) for immunohistochemistry. Clinical relevance has not been evaluated.

Please check the [product details page](#) for more images. Overall 4 images are available for ABIN390758.