

Datasheet for ABIN390762
anti-FUCA1 antibody (AA 265-294)

3 Images

[Go to Product page](#)

Overview

Quantity:	400 µL
Target:	FUCA1
Binding Specificity:	AA 265-294
Reactivity:	Human
Host:	Rabbit
Clonality:	Polyclonal
Conjugate:	This FUCA1 antibody is un-conjugated
Application:	Western Blotting (WB), Flow Cytometry (FACS), Immunohistochemistry (Paraffin-embedded Sections) (IHC (p))

Product Details

Immunogen:	This FUCA1 antibody is generated from rabbits immunized with a KLH conjugated synthetic peptide between 265-294 amino acids from the Central region of human FUCA1.
Clone:	RB19323
Isotype:	Ig Fraction
Predicted Reactivity:	Pr
Purification:	This antibody is prepared by Saturated Ammonium Sulfate (SAS) precipitation followed by dialysis against PBS.

Target Details

Target:	FUCA1
---------	-------

Target Details

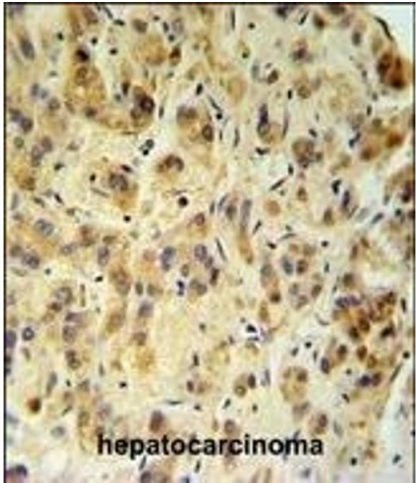
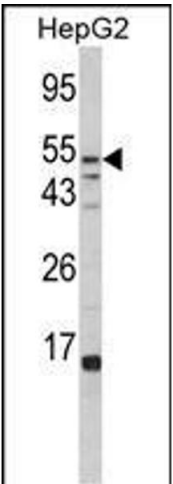
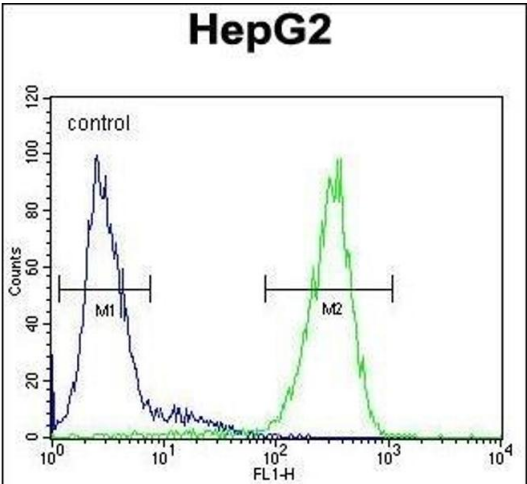
Alternative Name:	FUCA1 (FUCA1 Products)
Background:	FUCA1 is a lysosomal enzyme involved in the degradation of fucose-containing glycoproteins and glycolipids. Mutations in this gene are associated with fucosidosis (FUCA1D), which is an autosomal recessive lysosomal storage disease. A pseudogene of this locus is present on chr 2.
Molecular Weight:	53689
Gene ID:	2517
NCBI Accession:	NP_000138
UniProt:	P04066
Pathways:	Glycosaminoglycan Metabolic Process

Application Details

Application Notes:	WB: 1:1000. IHC-P: 1:50~100. FC: 1:10~50
Restrictions:	For Research Use only

Handling

Format:	Liquid
Buffer:	Purified polyclonal antibody supplied in PBS with 0.09 % (W/V) sodium azide.
Preservative:	Sodium azide
Precaution of Use:	This product contains Sodium azide: a POISONOUS AND HAZARDOUS SUBSTANCE which should be handled by trained staff only.
Storage:	4 °C, -20 °C
Storage Comment:	Maintain refrigerated at 2-8 °C for up to 6 months. For long term storage store at -20 °C in small aliquots to prevent freeze-thaw cycles.
Expiry Date:	6 months



Flow Cytometry

Image 1. FUCA1 Antibody (Center) (ABIN390762 and ABIN2841020) flow cytometric analysis of HepG2 cells (right histogram) compared to a negative control cell (left histogram). FITC-conjugated goat-anti-rabbit secondary antibodies were used for the analysis.

Western Blotting

Image 2. Western blot analysis of FUCA1 Antibody (Center) (ABIN390762 and ABIN2841020) in HepG2 cell line lysates (35 µg/lane). FUCA1 (arrow) was detected using the purified Pab.

Immunohistochemistry (Paraffin-embedded Sections)

Image 3. FUCA1 Antibody (Center) (ABIN390762 and ABIN2841020) IHC analysis in formalin fixed and paraffin embedded human hepatocarcinoma followed by peroxidase conjugation of the secondary antibody and DAB staining. This data demonstrates the use of the FUCA1 Antibody (Center) for immunohistochemistry. Clinical relevance has not been evaluated.