



[Go to Product page](#)

Datasheet for ABIN390763
anti-GZMM antibody (AA 84-113)

3 Images

Overview

Quantity:	400 µL
Target:	GZMM
Binding Specificity:	AA 84-113
Reactivity:	Human
Host:	Rabbit
Clonality:	Polyclonal
Conjugate:	This GZMM antibody is un-conjugated
Application:	Western Blotting (WB), Immunohistochemistry (Paraffin-embedded Sections) (IHC (p)), Flow Cytometry (FACS)

Product Details

Immunogen:	This GZMM antibody is generated from rabbits immunized with a KLH conjugated synthetic peptide between 84-113 amino acids from the Central region of human GZMM.
Clone:	RB19358
Isotype:	Ig Fraction
Purification:	This antibody is prepared by Saturated Ammonium Sulfate (SAS) precipitation followed by dialysis against PBS.

Target Details

Target:	GZMM
Alternative Name:	GZMM (GZMM Products)

Target Details

Background: GZMM cleaves peptide substrates after methionine, leucine, and norleucine.

Molecular Weight: 27545

Gene ID: 3004

NCBI Accession: [NP_001245280](#), [NP_005308](#)

UniProt: [P51124](#)

Application Details

Application Notes: WB: 1:1000. IHC-P: 1:10~50. FC: 1:10~50

Restrictions: For Research Use only

Handling

Format: Liquid

Buffer: Purified polyclonal antibody supplied in PBS with 0.09 % (W/V) sodium azide.

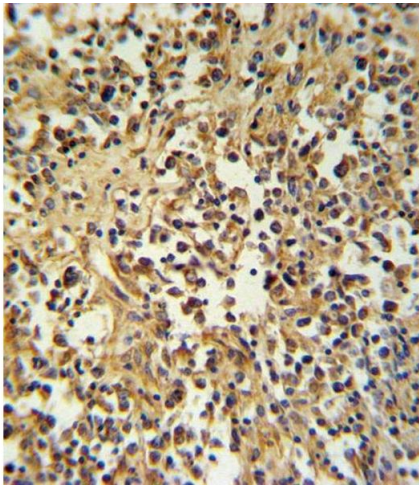
Preservative: Sodium azide

Precaution of Use: This product contains Sodium azide: a POISONOUS AND HAZARDOUS SUBSTANCE which should be handled by trained staff only.

Storage: 4 °C, -20 °C

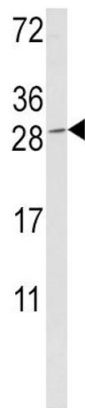
Storage Comment: Maintain refrigerated at 2-8 °C for up to 6 months. For long term storage store at -20 °C in small aliquots to prevent freeze-thaw cycles.

Expiry Date: 6 months



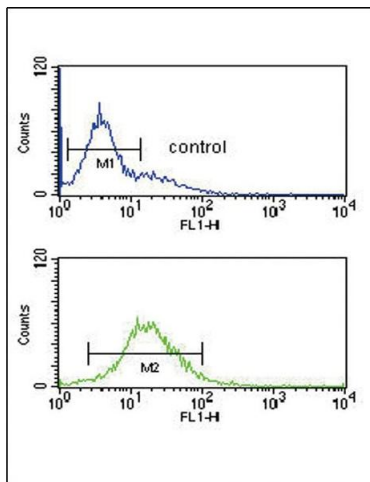
Immunohistochemistry (Paraffin-embedded Sections)

Image 1. GZ Antibody (Center) (ABIN390763 and ABIN2841021) IHC analysis in formalin fixed and paraffin embedded human lymph tissue followed by peroxidase conjugation of the secondary antibody and DAB staining. This data demonstrates the use of the GZ Antibody (Center) for iunohistochemistry. Clinical relevance has not been evaluated.



Western Blotting

Image 2. Western blot analysis of GZ Antibody (Center) (ABIN390763 and ABIN2841021) in K562 cell line lysates (35 µg/lane). GZ (arrow) was detected using the purified Pab.



Flow Cytometry

Image 3. GZ Antibody (Center) (ABIN390763 and ABIN2841021) flow cytometric analysis of K562 cells (bottom histogram) compared to a negative control cell (top histogram). FITC-conjugated goat-anti-rabbit secondary antibodies were used for the analysis.