

Datasheet for ABIN390767
anti-SCG2 antibody (AA 246-274)[Go to Product page](#)

2 Images

Overview

Quantity:	400 µL
Target:	SCG2
Binding Specificity:	AA 246-274
Reactivity:	Human
Host:	Rabbit
Clonality:	Polyclonal
Conjugate:	This SCG2 antibody is un-conjugated
Application:	Western Blotting (WB), Immunohistochemistry (Paraffin-embedded Sections) (IHC (p))

Product Details

Immunogen:	This Chromogranin-C antibody is generated from rabbits immunized with a KLH conjugated synthetic peptide between 246-274 amino acids from the Central region of human Chromogranin-C.
Clone:	RB19484
Isotype:	Ig Fraction
Predicted Reactivity:	Pig
Purification:	This antibody is prepared by Saturated Ammonium Sulfate (SAS) precipitation followed by dialysis against PBS.

Target Details

Target:	SCG2
---------	------

Target Details

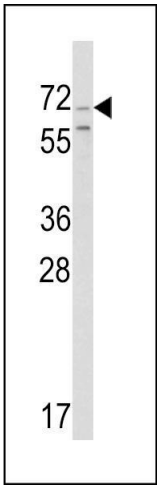
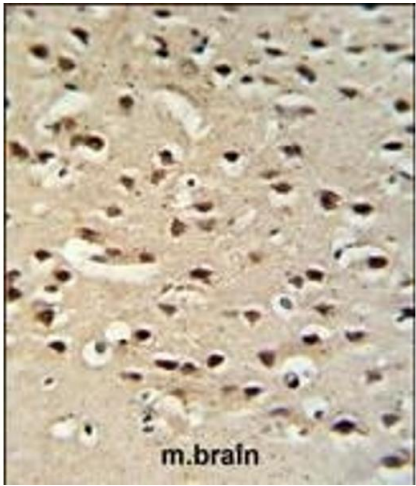
Alternative Name:	Chromogranin-C (SCG2 Products)
Background:	Chromogranin-C is a member of the chromogranin/secretogranin family of neuroendocrine secretory proteins. Studies in rodents suggest that the full-length protein, secretogranin II, is involved in the packaging or sorting of peptide hormones and neuropeptides into secretory vesicles. The full-length protein is cleaved to produce the active peptide secretoneurin, which exerts chemotaxic effects on specific cell types, and EM66, whose function is unknown.
Molecular Weight:	70941
Gene ID:	7857
NCBI Accession:	NP_003460
UniProt:	P13521

Application Details

Application Notes:	WB: 1:1000. IHC-P: 1:50~100
Restrictions:	For Research Use only

Handling

Format:	Liquid
Buffer:	Purified polyclonal antibody supplied in PBS with 0.09 % (W/V) sodium azide.
Preservative:	Sodium azide
Precaution of Use:	This product contains Sodium azide: a POISONOUS AND HAZARDOUS SUBSTANCE which should be handled by trained staff only.
Storage:	4 °C, -20 °C
Storage Comment:	Maintain refrigerated at 2-8 °C for up to 6 months. For long term storage store at -20 °C in small aliquots to prevent freeze-thaw cycles.
Expiry Date:	6 months



Immunohistochemistry (Paraffin-embedded Sections)

Image 1. Chromogranin-C Antibody (Center) (ABIN390767 and ABIN2841025) IHC analysis in formalin fixed and paraffin embedded mouse brain tissue followed by peroxidase conjugation of the secondary antibody and DAB staining. This data demonstrates the use of the Chromogranin-C Antibody (Center) for immunohistochemistry. Clinical relevance has not been evaluated.

Western Blotting

Image 2. Western blot analysis of Chromogranin-C Antibody (Center) (ABIN390767 and ABIN2841025) in Ramos cell line lysates (35 µg/lane). SCG2 (arrow) was detected using the purified Pab.