

Datasheet for ABIN390770
anti-HLA-DRA antibody (N-Term)

3 Images

[Go to Product page](#)

Overview

| | |
|----------------------|---|
| Quantity: | 400 µL |
| Target: | HLA-DRA |
| Binding Specificity: | AA 48-75, N-Term |
| Reactivity: | Human |
| Host: | Rabbit |
| Clonality: | Polyclonal |
| Conjugate: | This HLA-DRA antibody is un-conjugated |
| Application: | Western Blotting (WB), Flow Cytometry (FACS), Immunohistochemistry (Paraffin-embedded Sections) (IHC (p)) |

Product Details

| | |
|---------------|--|
| Immunogen: | This HLA-DRA antibody is generated from rabbits immunized with a KLH conjugated synthetic peptide between 48-75 amino acids from the N-terminal region of human HLA-DRA. |
| Clone: | RB19526 |
| Isotype: | Ig Fraction |
| Purification: | This antibody is prepared by Saturated Ammonium Sulfate (SAS) precipitation followed by dialysis against PBS. |

Target Details

| | |
|-------------------|--|
| Target: | HLA-DRA |
| Alternative Name: | HLA-DRA (HLA-DRA Products) |

Target Details

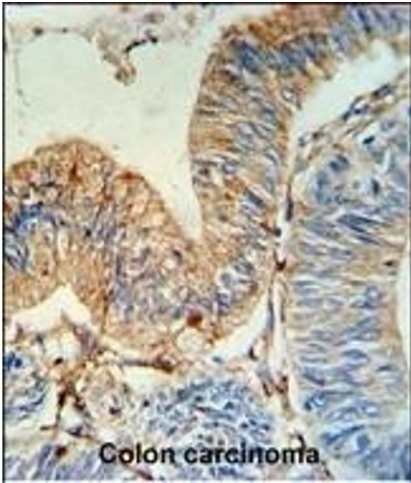
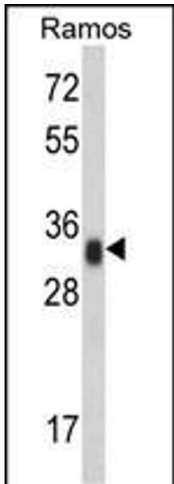
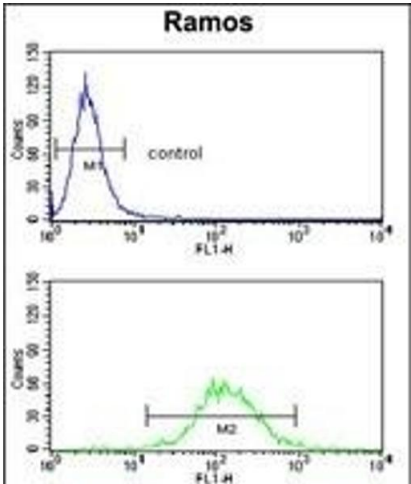
| | |
|-------------------|--|
| Background: | HLA-DRA is one of the HLA class II alpha chain paralogues. This class II molecule is a heterodimer consisting of an alpha and a beta chain, both anchored in the membrane. It plays a central role in the immune system by presenting peptides derived from extracellular proteins. Class II molecules are expressed in antigen presenting cells (APC: B lymphocytes, dendritic cells, macrophages). |
| Molecular Weight: | 28607 |
| Gene ID: | 3122 |
| NCBI Accession: | NP_061984 |
| UniProt: | P01903 |
| Pathways: | TCR Signaling , CXCR4-mediated Signaling Events , Human Leukocyte Antigen (HLA) in Adaptive Immune Response |

Application Details

| | |
|--------------------|--|
| Application Notes: | WB: 1:1000. IHC-P: 1:50~100. FC: 1:10~50 |
| Restrictions: | For Research Use only |

Handling

| | |
|--------------------|--|
| Format: | Liquid |
| Buffer: | Purified polyclonal antibody supplied in PBS with 0.09 % (W/V) sodium azide. |
| Preservative: | Sodium azide |
| Precaution of Use: | This product contains Sodium azide: a POISONOUS AND HAZARDOUS SUBSTANCE which should be handled by trained staff only. |
| Storage: | 4 °C,-20 °C |
| Storage Comment: | Maintain refrigerated at 2-8 °C for up to 6 months. For long term storage store at -20 °C in small aliquots to prevent freeze-thaw cycles. |
| Expiry Date: | 6 months |



Flow Cytometry

Image 1. HLA-DRA Antibody (N-term) (ABIN390770 and ABIN2841028) flow cytometry analysis of Ramos cells (bottom histogram) compared to a negative control cell (top histogram). FITC-conjugated goat-anti-rabbit secondary antibodies were used for the analysis.

Western Blotting

Image 2. Western blot analysis of HLA-DRA Antibody (N-term) (ABIN390770 and ABIN2841028) in Ramos cell line lysates (35 µg/lane). HLA-DRA (arrow) was detected using the purified Pab.

Immunohistochemistry (Paraffin-embedded Sections)

Image 3. HLA-DRA Antibody (N-term) (ABIN390770 and ABIN2841028) IHC analysis in formalin fixed and paraffin embedded human colon carcinoma followed by peroxidase conjugation of the secondary antibody and DAB staining. This data demonstrates the use of the HLA-DRA Antibody (N-term) for immunohistochemistry. Clinical relevance has not been evaluated.