

Datasheet for ABIN390771

anti-HLA-DRA antibody (C-Term)**2** Images[Go to Product page](#)

Overview

Quantity:	400 µL
Target:	HLA-DRA
Binding Specificity:	AA 149-177, C-Term
Reactivity:	Human
Host:	Rabbit
Clonality:	Polyclonal
Conjugate:	This HLA-DRA antibody is un-conjugated
Application:	Western Blotting (WB), Flow Cytometry (FACS)

Product Details

Immunogen:	This HLA-DRA antibody is generated from rabbits immunized with a KLH conjugated synthetic peptide between 149-177 amino acids from the C-terminal region of human HLA-DRA.
Clone:	RB19527
Isotype:	Ig Fraction
Purification:	This antibody is prepared by Saturated Ammonium Sulfate (SAS) precipitation followed by dialysis against PBS.

Target Details

Target:	HLA-DRA
Alternative Name:	HLA-DRA (HLA-DRA Products)

Target Details

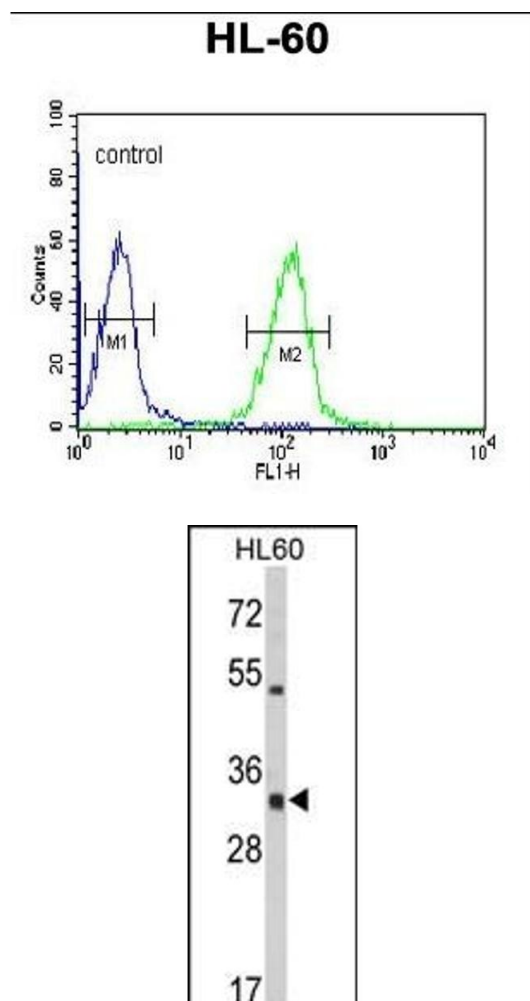
Background:	HLA-DRA is one of the HLA class II alpha chain paralogues. This class II molecule is a heterodimer consisting of an alpha and a beta chain, both anchored in the membrane. It plays a central role in the immune system by presenting peptides derived from extracellular proteins. Class II molecules are expressed in antigen presenting cells (APC: B lymphocytes, dendritic cells, macrophages).
Molecular Weight:	28607
Gene ID:	3122
NCBI Accession:	NP_061984
UniProt:	P01903
Pathways:	TCR Signaling , CXCR4-mediated Signaling Events , Human Leukocyte Antigen (HLA) in Adaptive Immune Response

Application Details

Application Notes:	WB: 1:1000. FC: 1:10~50
Restrictions:	For Research Use only

Handling

Format:	Liquid
Buffer:	Purified polyclonal antibody supplied in PBS with 0.09 % (W/V) sodium azide.
Preservative:	Sodium azide
Precaution of Use:	This product contains Sodium azide: a POISONOUS AND HAZARDOUS SUBSTANCE which should be handled by trained staff only.
Storage:	4 °C,-20 °C
Storage Comment:	Maintain refrigerated at 2-8 °C for up to 6 months. For long term storage store at -20 °C in small aliquots to prevent freeze-thaw cycles.
Expiry Date:	6 months



Flow Cytometry

Image 1. HLA-DRA Antibody (C-term) (ABIN390771 and ABIN2841029) flow cytometric analysis of HL-60 cells (right histogram) compared to a negative control cell (left histogram). FITC-conjugated goat-anti-rabbit secondary antibodies were used for the analysis.

Western Blotting

Image 2. Western blot analysis of HLA-DRA Antibody (C-term) (ABIN390771 and ABIN2841029) in HL60 cell line lysates (35 μ g/lane). HLA-DRA (arrow) was detected using the purified Pab.