

Datasheet for ABIN390776
anti-CUEDC2 antibody (C-Term)[Go to Product page](#)

3 Images

Overview

Quantity:	400 µL
Target:	CUEDC2
Binding Specificity:	AA 239-267, C-Term
Reactivity:	Human
Host:	Rabbit
Clonality:	Polyclonal
Conjugate:	This CUEDC2 antibody is un-conjugated
Application:	Western Blotting (WB), Immunohistochemistry (Paraffin-embedded Sections) (IHC (p)), Flow Cytometry (FACS)

Product Details

Immunogen:	This CUEDC2 antibody is generated from rabbits immunized with a KLH conjugated synthetic peptide between 239-267 amino acids from the C-terminal region of human CUEDC2.
Clone:	RB19592
Isotype:	Ig Fraction
Predicted Reactivity:	B, M, Rat
Purification:	This antibody is prepared by Saturated Ammonium Sulfate (SAS) precipitation followed by dialysis against PBS.

Target Details

Target:	CUEDC2
---------	--------

Target Details

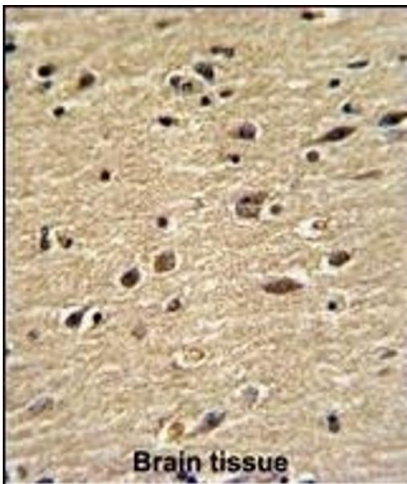
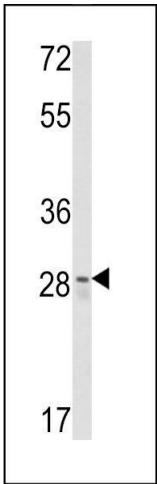
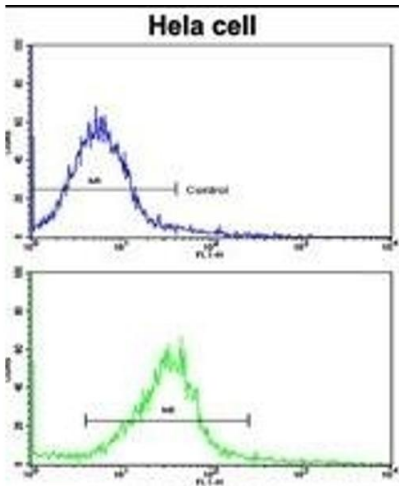
Alternative Name:	CUEDC2 (CUEDC2 Products)
Background:	CUEDC2 controls PGR and ESR1 protein levels through their targeting for ubiquitination and subsequent proteasomal degradation.
Molecular Weight:	32009
Gene ID:	79004
NCBI Accession:	NP_076945
UniProt:	Q9H467

Application Details

Application Notes:	WB: 1:1000. IHC-P: 1:50~100. FC: 1:10~50
Restrictions:	For Research Use only

Handling

Format:	Liquid
Buffer:	Purified polyclonal antibody supplied in PBS with 0.09 % (W/V) sodium azide.
Preservative:	Sodium azide
Precaution of Use:	This product contains Sodium azide: a POISONOUS AND HAZARDOUS SUBSTANCE which should be handled by trained staff only.
Storage:	4 °C,-20 °C
Storage Comment:	Maintain refrigerated at 2-8 °C for up to 6 months. For long term storage store at -20 °C in small aliquots to prevent freeze-thaw cycles.
Expiry Date:	6 months



Flow Cytometry

Image 1. Flow cytometric analysis of hela cells using CUEDC2 Antibody (C-term)(bottom histogram) compared to a negative control cell (top histogram). FITC-conjugated goat-anti-rabbit secondary antibodies were used for the analysis.

Western Blotting

Image 2. Western blot analysis of CUEDC2 Antibody (C-term) (ABIN390776 and ABIN2841032) in Y79 cell line lysates (35 µg/lane). CUEDC2 (arrow) was detected using the purified Pab.

Immunohistochemistry (Paraffin-embedded Sections)

Image 3. Formalin-fixed and paraffin-embedded human brain with CUEDC2 Antibody (C-term), which was peroxidase-conjugated to the secondary antibody, followed by DAB staining. This data demonstrates the use of this antibody for immunohistochemistry, clinical relevance has not been evaluated.