

Datasheet for ABIN390787  
**anti-HLTF antibody (AA 409-437)**[Go to Product page](#)

## 2 Images

## Overview

Quantity:	400 µL
Target:	HLTF
Binding Specificity:	AA 409-437
Reactivity:	Human
Host:	Rabbit
Clonality:	Polyclonal
Conjugate:	This HLTF antibody is un-conjugated
Application:	Western Blotting (WB), Flow Cytometry (FACS)

## Product Details

Immunogen:	This HIP116A antibody is generated from rabbits immunized with a KLH conjugated synthetic peptide between 409-437 amino acids from the Central region of human HIP116A.
Clone:	RB20624
Isotype:	Ig Fraction
Purification:	This antibody is prepared by Saturated Ammonium Sulfate (SAS) precipitation followed by dialysis against PBS.

## Target Details

Target:	HLTF
Alternative Name:	HIP116A ( <a href="#">HLTF Products</a> )

## Target Details

Background:	HIP116A is a member of the SWI/SNF family. Members of this family have helicase and ATPase activities and are thought to regulate transcription of certain genes by altering the chromatin structure around those genes. This protein contains a RING finger DNA binding motif.
-------------	---

Molecular Weight:	113929
-------------------	--------

Gene ID:	6596
----------	------

NCBI Accession:	<a href="#">NP_003062</a> , <a href="#">NP_620636</a>
-----------------	---

UniProt:	<a href="#">Q14527</a>
----------	------------------------

## Application Details

Application Notes:	WB: 1:1000. FC: 1:10~50
--------------------	-------------------------

Restrictions:	For Research Use only
---------------	-----------------------

## Handling

Format:	Liquid
---------	--------

Buffer:	Purified polyclonal antibody supplied in PBS with 0.09 % (W/V) sodium azide.
---------	--

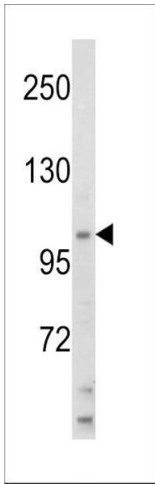
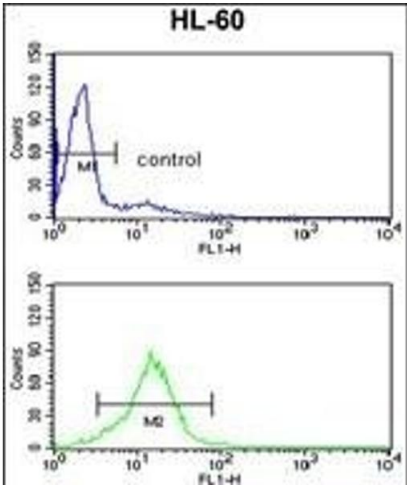
Preservative:	Sodium azide
---------------	--------------

Precaution of Use:	This product contains Sodium azide: a POISONOUS AND HAZARDOUS SUBSTANCE which should be handled by trained staff only.
--------------------	--

Storage:	4 °C, -20 °C
----------	--------------

Storage Comment:	Maintain refrigerated at 2-8 °C for up to 6 months. For long term storage store at -20 °C in small aliquots to prevent freeze-thaw cycles.
------------------	--

Expiry Date:	6 months
--------------	----------



### Flow Cytometry

**Image 1.** HIP116A Antibody (Center) (ABIN390787 and ABIN2841039) flow cytometry analysis of HL-60 cells (bottom histogram) compared to a negative control cell (top histogram). FITC-conjugated goat-anti-rabbit secondary antibodies were used for the analysis.

### Western Blotting

**Image 2.** Western blot analysis of HIP116A Antibody (Center) (ABIN390787 and ABIN2841039) in HL60 cell line lysates (35 µg/lane). HIP116A (arrow) was detected using the purified Pab.