

Datasheet for ABIN390792
anti-KPNB1 antibody (N-Term)

3 Images

[Go to Product page](#)

Overview

Quantity:	400 µL
Target:	KPNB1
Binding Specificity:	AA 190-216, N-Term
Reactivity:	Human
Host:	Rabbit
Clonality:	Polyclonal
Conjugate:	This KPNB1 antibody is un-conjugated
Application:	Western Blotting (WB), Immunohistochemistry (Paraffin-embedded Sections) (IHC (p)), Flow Cytometry (FACS)

Product Details

Immunogen:	This KPNB1 antibody is generated from rabbits immunized with a KLH conjugated synthetic peptide between 190-216 amino acids from the N-terminal region of human KPNB1.
Clone:	RB20681
Isotype:	Ig Fraction
Predicted Reactivity:	M, Rat, X
Purification:	This antibody is prepared by Saturated Ammonium Sulfate (SAS) precipitation followed by dialysis against PBS.

Target Details

Target:	KPNB1
---------	-------

Target Details

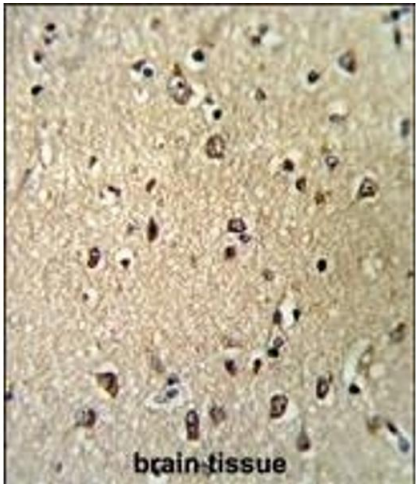
Alternative Name:	KPNB1 (KPNB1 Products)
Background:	NTF97 is involved in nuclear protein import, either by associating itself with an adapter protein (for example, importin-alpha subunit which binds to nuclear localization signals (NLS) in cargo substrates), or by acting autonomously as a nuclear transport receptor.
Molecular Weight:	97170
Gene ID:	3837
NCBI Accession:	NP_001263382 , NP_002256
UniProt:	Q14974
Pathways:	Protein targeting to Nucleus

Application Details

Application Notes:	WB: 1:1000. IHC-P: 1:50~100. FC: 1:10~50
Restrictions:	For Research Use only

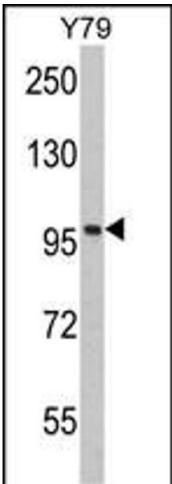
Handling

Format:	Liquid
Buffer:	Purified polyclonal antibody supplied in PBS with 0.09 % (W/V) sodium azide.
Preservative:	Sodium azide
Precaution of Use:	This product contains Sodium azide: a POISONOUS AND HAZARDOUS SUBSTANCE which should be handled by trained staff only.
Storage:	4 °C, -20 °C
Storage Comment:	Maintain refrigerated at 2-8 °C for up to 6 months. For long term storage store at -20 °C in small aliquots to prevent freeze-thaw cycles.
Expiry Date:	6 months



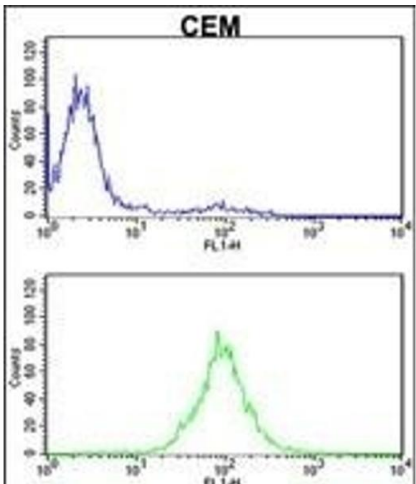
Immunohistochemistry (Paraffin-embedded Sections)

Image 1. Formalin-fixed and paraffin-embedded human brain tissue reacted with KPNB1 Antibody (N-term), which was peroxidase-conjugated to the secondary antibody, followed by DAB staining. This data demonstrates the use of this antibody for immunohistochemistry, clinical relevance has not been evaluated.



Western Blotting

Image 2. Western blot analysis of KPNB1 Antibody (N-term) (ABIN390792 and ABIN2841041) in Y79 cell line lysates (35 µg/lane). KPNB1 (arrow) was detected using the purified Pab.



Flow Cytometry

Image 3. KPNB1 Antibody (N-term) (ABIN390792 and ABIN2841041) flow cytometric analysis of CEM cells (bottom histogram) compared to a negative control cell (top histogram). FITC-conjugated goat-anti-rabbit secondary antibodies were used for the analysis.