

Datasheet for ABIN390811
anti-BCKDHA antibody (C-Term)

3 Images

[Go to Product page](#)

Overview

Quantity:	400 µL
Target:	BCKDHA
Binding Specificity:	AA 362-390, C-Term
Reactivity:	Human
Host:	Rabbit
Clonality:	Polyclonal
Conjugate:	This BCKDHA antibody is un-conjugated
Application:	Western Blotting (WB), Immunohistochemistry (Paraffin-embedded Sections) (IHC (p)), Flow Cytometry (FACS)

Product Details

Immunogen:	This BCKDHA antibody is generated from rabbits immunized with a KLH conjugated synthetic peptide between 362-390 amino acids from the C-terminal region of human BCKDHA.
Clone:	RB20924
Isotype:	Ig Fraction
Purification:	This antibody is prepared by Saturated Ammonium Sulfate (SAS) precipitation followed by dialysis against PBS.

Target Details

Target:	BCKDHA
Alternative Name:	BCKDHA (BCKDHA Products)

Target Details

Background: The branched-chain alpha-keto acid (BCAA) dehydrogenase(BCKD) complex is an ininter mitochondrial enzyme complex that catalyzes the second major step in the catabolism of the branched-chain amino acids leucine, isoleucine, and valine. The BCKD complex consists of three catalytic components: a heterotetrameric (alpha2-beta2) branched-chain alpha-keto acid decarboxylase (E1), a dihydrolipoyl transacylase (E2), and a dihydrolipoamide dehydrogenase (E3). BCKDHA is the alpha subunit of the decarboxylase (E1) component.

Molecular Weight: 50471

Gene ID: 593

NCBI Accession: [NP_000700](#)

UniProt: [P12694](#)

Application Details

Application Notes: WB: 1:1000. IHC-P: 1:50~100. FC: 1:10~50

Restrictions: For Research Use only

Handling

Format: Liquid

Buffer: Purified polyclonal antibody supplied in PBS with 0.09 % (W/V) sodium azide.

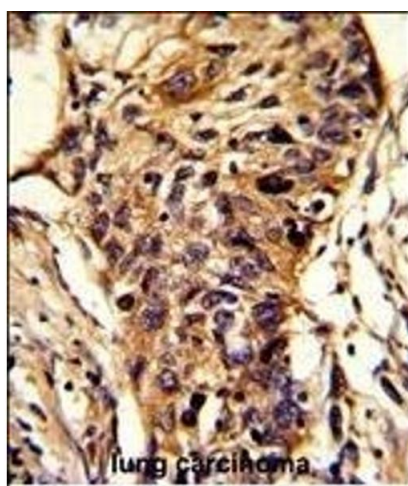
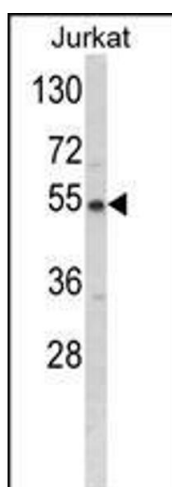
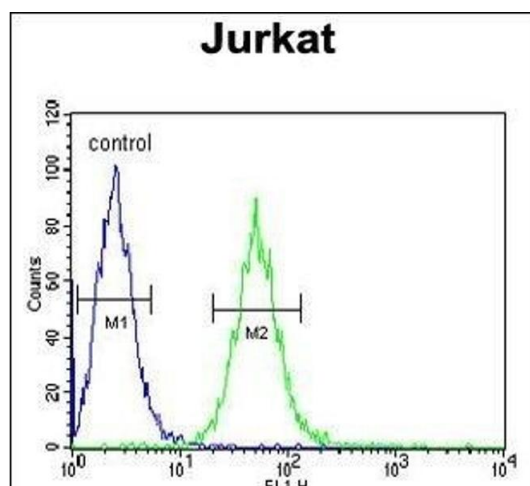
Preservative: Sodium azide

Precaution of Use: This product contains Sodium azide: a POISONOUS AND HAZARDOUS SUBSTANCE which should be handled by trained staff only.

Storage: 4 °C,-20 °C

Storage Comment: Maintain refrigerated at 2-8 °C for up to 6 months. For long term storage store at -20 °C in small aliquots to prevent freeze-thaw cycles.

Expiry Date: 6 months



Flow Cytometry

Image 1. BCKDHA Antibody (C-term) (ABIN390811 and ABIN2841048) flow cytometric analysis of Jurkat cells (right histogram) compared to a negative control cell (left histogram). FITC-conjugated goat-anti-rabbit secondary antibodies were used for the analysis.

Western Blotting

Image 2. Western blot analysis of BCKDHA Antibody (C-term) (ABIN390811 and ABIN2841048) in Jurkat cell line lysates (35 µg/lane). BCKDHA (arrow) was detected using the purified Pab.

Immunohistochemistry (Paraffin-embedded Sections)

Image 3. Formalin-fixed and paraffin-embedded human lung carcinoma reacted with BCKDHA Antibody (C-term), which was peroxidase-conjugated to the secondary antibody, followed by DAB staining. This data demonstrates the use of this antibody for immunohistochemistry, clinical relevance has not been evaluated.