

Datasheet for ABIN390818  
**anti-LAMB2 antibody (C-Term)**

## 3 Images

[Go to Product page](#)

## Overview

Quantity:	400 µL
Target:	LAMB2
Binding Specificity:	AA 1579-1606, C-Term
Reactivity:	Human
Host:	Rabbit
Clonality:	Polyclonal
Conjugate:	This LAMB2 antibody is un-conjugated
Application:	Western Blotting (WB), Immunohistochemistry (Paraffin-embedded Sections) (IHC (p)), Flow Cytometry (FACS)

## Product Details

Immunogen:	This LAMB2 antibody is generated from rabbits immunized with a KLH conjugated synthetic peptide between 1579-1606 amino acids from the C-terminal region of human LAMB2.
Clone:	RB20568
Isotype:	Ig Fraction
Purification:	This antibody is prepared by Saturated Ammonium Sulfate (SAS) precipitation followed by dialysis against PBS.

## Target Details

Target:	LAMB2
Alternative Name:	LAMB2 ( <a href="#">LAMB2 Products</a> )

## Target Details

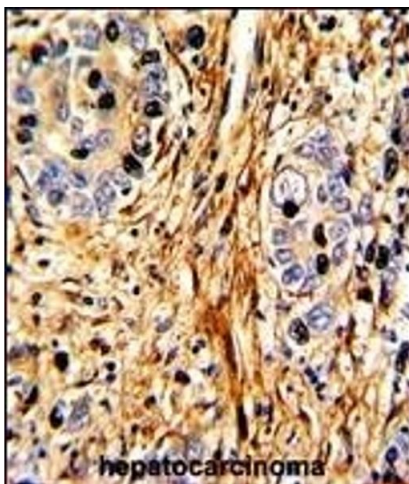
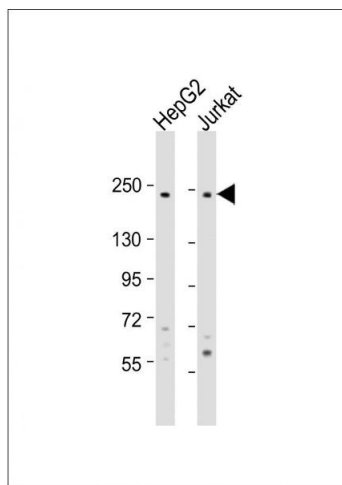
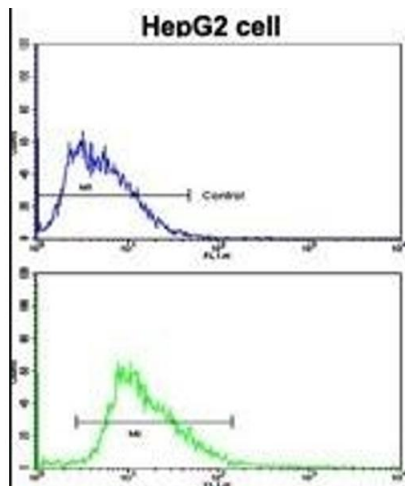
Background:	Binding to cells via a high affinity receptor, laminin is thought to mediate the attachment, migration and organization of cells into tissues during embryonic development by interacting with other extracellular matrix components.
Molecular Weight:	195981
Gene ID:	3913
NCBI Accession:	<a href="#">NP_002283</a>
UniProt:	<a href="#">P55268</a>
Pathways:	<a href="#">Skeletal Muscle Fiber Development</a>

## Application Details

Application Notes:	WB: 1:1000. IHC-P: 1:50~100. FC: 1:10~50
Restrictions:	For Research Use only

## Handling

Format:	Liquid
Buffer:	Purified polyclonal antibody supplied in PBS with 0.09 % (W/V) sodium azide.
Preservative:	Sodium azide
Precaution of Use:	This product contains Sodium azide: a POISONOUS AND HAZARDOUS SUBSTANCE which should be handled by trained staff only.
Storage:	4 °C,-20 °C
Storage Comment:	Maintain refrigerated at 2-8 °C for up to 6 months. For long term storage store at -20 °C in small aliquots to prevent freeze-thaw cycles.
Expiry Date:	6 months



### Flow Cytometry

**Image 1.** Flow cytometric analysis of HepG2 cells using LB2 Antibody (C-term)(bottom histogr) compared to a negative control cell (top histogr). FITC-conjugated goat-anti-rabbit secondary antibodies were used for the analysis.

### Western Blotting

**Image 2.** All lanes : Anti-LB2 Antibody (C-term) at 1:1000 dilution Lane 1: HepG2 whole cell lysate Lane 2: Jurkat whole cell lysate Lysates/proteins at 20 µg per lane. Secondary Goat Anti-Rabbit IgG, (H+L), Peroxidase conjugated at 1/10000 dilution. Predicted band size : 196 kDa Blocking/Dilution buffer: 5 % NFDm/TBST.

### Immunohistochemistry (Paraffin-embedded Sections)

**Image 3.** Formalin-fixed and paraffin-embedded human hepatocarcinoma with LB2 Antibody (C-term), which was peroxidase-conjugated to the secondary antibody, followed by DAB staining. This data demonstrates the use of this antibody for immunohistochemistry, clinical relevance has not been evaluated.