

Datasheet for ABIN390820
anti-PTP4A2 antibody (AA 32-59)

5 Images

[Go to Product page](#)

Overview

Quantity:	400 µL
Target:	PTP4A2
Binding Specificity:	AA 32-59
Reactivity:	Human
Host:	Rabbit
Clonality:	Polyclonal
Conjugate:	This PTP4A2 antibody is un-conjugated
Application:	Western Blotting (WB), Immunofluorescence (IF), Immunohistochemistry (Paraffin-embedded Sections) (IHC (p)), Flow Cytometry (FACS)

Product Details

Immunogen:	This PTP4A2 antibody is generated from rabbits immunized with a KLH conjugated synthetic peptide between 32-59 amino acids from the Central region of human PTP4A2.
Clone:	RB18592
Isotype:	Ig Fraction
Predicted Reactivity:	M, Rat
Purification:	This antibody is purified through a protein A column, followed by peptide affinity purification.

Target Details

Target:	PTP4A2
---------	--------

Target Details

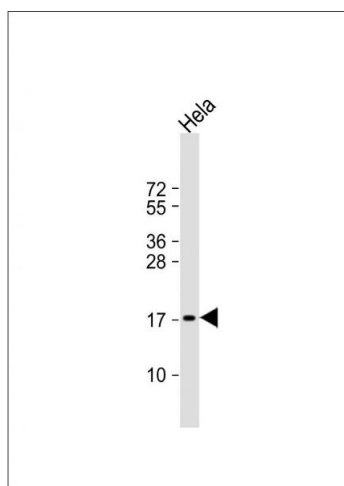
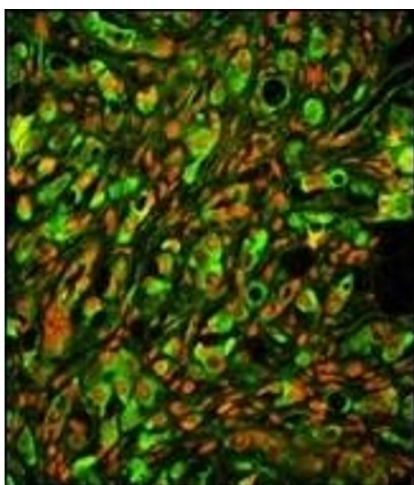
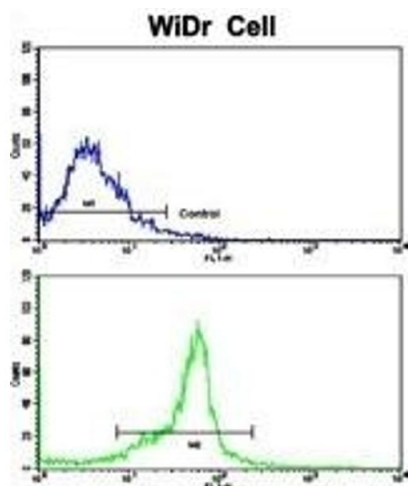
Alternative Name:	PTP4A2 (PTP4A2 Products)
Background:	PTP4A2 belongs to a small class of the protein tyrosine phosphatase (PTP) family. PTPs are cell signaling molecules that play regulatory roles in a variety of cellular processes. PTPs in this class contain a protein tyrosine phosphatase catalytic domain and a characteristic C-terminal prenylation motif. This PTP has been shown to primarily associate with plasmic and endosomal membrane through its C-terminal prenylation. This PTP was found to interact with the beta-subunit of Rab geranylgeranyltransferase II (beta GGT II), and thus may function as a regulator of GGT II activity.
Molecular Weight:	19127
Gene ID:	8073
NCBI Accession:	NP_001182029 , NP_001182030 , NP_536316
UniProt:	Q12974

Application Details

Application Notes:	IF: 1:10~50. WB: 1:1000. WB: 1:1000. IHC-P: 1:50~100. FC: 1:10~50
Restrictions:	For Research Use only

Handling

Format:	Liquid
Buffer:	Purified polyclonal antibody supplied in PBS with 0.09 % (W/V) sodium azide.
Preservative:	Sodium azide
Precaution of Use:	This product contains Sodium azide: a POISONOUS AND HAZARDOUS SUBSTANCE which should be handled by trained staff only.
Storage:	4 °C,-20 °C
Storage Comment:	Maintain refrigerated at 2-8 °C for up to 6 months. For long term storage store at -20 °C in small aliquots to prevent freeze-thaw cycles.
Expiry Date:	6 months



Flow Cytometry

Image 1. Flow cytometric analysis of WiDr cells using PTP4A2 Antibody (Center)(bottom histogram) compared to a negative control cell (top histogram). FITC-conjugated goat-anti-rabbit secondary antibodies were used for the analysis.

Immunofluorescence

Image 2. Immunofluorescence analysis of PTP4A2 Antibody (Center) with paraffin-embedded human prostate carcinoma tissue. 0.05 mg/mL primary antibody was followed by FITC-conjugated goat anti-rabbit IgG (whole molecule). FITC emits green fluorescence. Red counterstaining is PI.

Western Blotting

Image 3. Anti-PTP4A2 Antibody (Center) at 1:1000 dilution + HeLa whole cell lysate. Lysates/proteins at 20 µg per lane. Secondary Goat Anti-Rabbit IgG, (H+L), Peroxidase conjugated at 1/10000 dilution. Predicted band size : 19 kDa. Blocking/Dilution buffer: 5 % NFDM/TBST.

Please check the [product details page](#) for more images. Overall 5 images are available for ABIN390820.