

Datasheet for ABIN390822
anti-COLEC11 antibody (N-Term)[Go to Product page](#)

4 Images

Overview

Quantity:	400 µL
Target:	COLEC11
Binding Specificity:	AA 50-78, N-Term
Reactivity:	Human
Host:	Rabbit
Clonality:	Polyclonal
Conjugate:	This COLEC11 antibody is un-conjugated
Application:	Western Blotting (WB), Immunohistochemistry (Paraffin-embedded Sections) (IHC (p)), Flow Cytometry (FACS)

Product Details

Immunogen:	This COLEC11 antibody is generated from rabbits immunized with a KLH conjugated synthetic peptide between 50-78 amino acids from the N-terminal region of human COLEC11.
Clone:	RB19578
Isotype:	Ig Fraction
Purification:	This antibody is prepared by Saturated Ammonium Sulfate (SAS) precipitation followed by dialysis against PBS.

Target Details

Target:	COLEC11
Alternative Name:	COLEC11 (COLEC11 Products)

Target Details

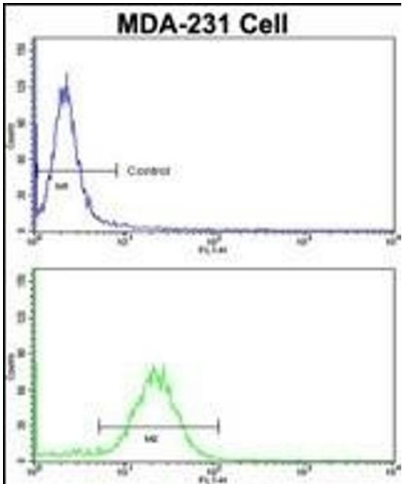
Background:	COLEC11 is a member of the collectin family of C-type lectins, which contain a collagen-like domain and a carbohydrate recognition domain, and play a role in host-defense
Molecular Weight:	28665
Gene ID:	78989
NCBI Accession:	NP_001242911 , NP_001242912 , NP_001242913 , NP_001242914 , NP_001242915 , NP_001242916 , NP_001242917 , NP_001242918 , NP_076932 , NP_954705
UniProt:	Q9BWP8

Application Details

Application Notes:	WB: 1:1000. WB: 1:1000. IHC-P: 1:50~100. FC: 1:10~50
Restrictions:	For Research Use only

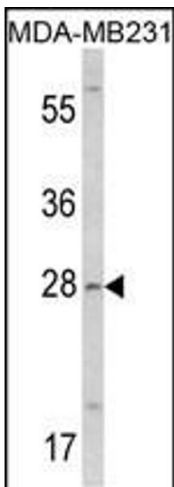
Handling

Format:	Liquid
Buffer:	Purified polyclonal antibody supplied in PBS with 0.09 % (W/V) sodium azide.
Preservative:	Sodium azide
Precaution of Use:	This product contains Sodium azide: a POISONOUS AND HAZARDOUS SUBSTANCE which should be handled by trained staff only.
Storage:	4 °C, -20 °C
Storage Comment:	Maintain refrigerated at 2-8 °C for up to 6 months. For long term storage store at -20 °C in small aliquots to prevent freeze-thaw cycles.
Expiry Date:	6 months



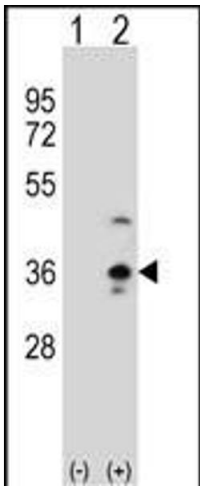
Flow Cytometry

Image 1. Flow cytometric analysis of MDA-231 cells using COLEC11 Antibody (N-term)(bottom histogram) compared to a negative control (top histogram). FITC-conjugated goat-anti-rabbit secondary antibodies were used for the analysis.



Western Blotting

Image 2. Western blot analysis of COLEC11 Antibody (N-term) (ABIN390822 and ABIN2841053) in MDA-M cell line lysates (35 µg/lane). COLEC11 (arrow) was detected using the purified Pab.



Western Blotting

Image 3. Western blot analysis of COLEC11 (arrow) using rabbit polyclonal COLEC11 Antibody (N-term) (ABIN390822 and ABIN2841053). 293 cell lysates (2 µg/lane) either nontransfected (Lane 1) or transiently transfected (Lane 2) with the COLEC11 gene.

Please check the [product details page](#) for more images. Overall 4 images are available for ABIN390822.