

Datasheet for ABIN390833
anti-CLINT1 antibody (AA 222-249)[Go to Product page](#)

2 Images

Overview

Quantity:	400 µL
Target:	CLINT1
Binding Specificity:	AA 222-249
Reactivity:	Human
Host:	Rabbit
Clonality:	Polyclonal
Conjugate:	This CLINT1 antibody is un-conjugated
Application:	Western Blotting (WB), Immunohistochemistry (Paraffin-embedded Sections) (IHC (p))

Product Details

Immunogen:	This ENTH antibody is generated from rabbits immunized with a KLH conjugated synthetic peptide between 222-249 amino acids from the Central region of human ENTH.
Clone:	RB19624
Isotype:	Ig Fraction
Predicted Reactivity:	B, M
Purification:	This antibody is prepared by Saturated Ammonium Sulfate (SAS) precipitation followed by dialysis against PBS.

Target Details

Target:	CLINT1
---------	--------

Target Details

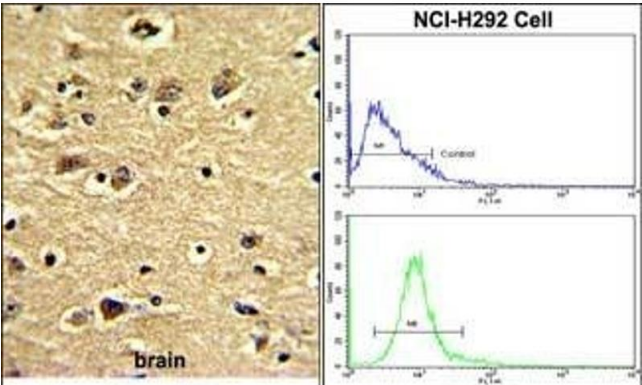
Alternative Name:	ENTH (CLINT1 Products)
Background:	ENTH binds to membranes enriched in phosphatidylinositol-4,5-biphosphate (PtdIns(4,5)P2). It May have a role in transport via clathrin-coated vesicles from the trans-Golgi network to endosomes. It stimulates clathrin assembly.
Molecular Weight:	68259
Gene ID:	9685
NCBI Accession:	NP_001182484 , NP_001182485 , NP_055481
UniProt:	Q14677

Application Details

Application Notes:	WB: 1:1000. IHC-P: 1:50~100
Restrictions:	For Research Use only

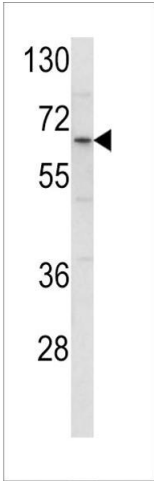
Handling

Format:	Liquid
Buffer:	Purified polyclonal antibody supplied in PBS with 0.09 % (W/V) sodium azide.
Preservative:	Sodium azide
Precaution of Use:	This product contains Sodium azide: a POISONOUS AND HAZARDOUS SUBSTANCE which should be handled by trained staff only.
Storage:	4 °C,-20 °C
Storage Comment:	Maintain refrigerated at 2-8 °C for up to 6 months. For long term storage store at -20 °C in small aliquots to prevent freeze-thaw cycles.
Expiry Date:	6 months



Immunohistochemistry (Paraffin-embedded Sections)

Image 1. (LEFT)Formalin-fixed and paraffin-embedded human brain with ENTH Antibody (Center), which was peroxidase-conjugated to the secondary antibody, followed by DAB staining. This data demonstrates the use of this antibody for immunohistochemistry, clinical relevance has not been evaluated. (RIGHT)Flow cytometric analysis of NCI- cells using ENTH Antibody (Center)(bottom histogram) compared to a negative control cell (top histogram). FITC-conjugated goat-anti-rabbit secondary antibodies were used for the analysis.



Western Blotting

Image 2. Western blot analysis of ENTH Antibody (Center) (ABIN390833 and ABIN2841059) in HL-60 cell line lysates (35 µg/lane). ENTH (arrow) was detected using the purified Pab.