

Datasheet for ABIN390834  
**anti-EPB41L4B antibody (C-Term)**



[Go to Product page](#)

2 Images

Overview

Quantity:	400 µL
Target:	EPB41L4B
Binding Specificity:	AA 650-677, C-Term
Reactivity:	Human
Host:	Rabbit
Clonality:	Polyclonal
Conjugate:	This EPB41L4B antibody is un-conjugated
Application:	Western Blotting (WB), Immunohistochemistry (Paraffin-embedded Sections) (IHC (p))

Product Details

Immunogen:	This EPB41L4B antibody is generated from rabbits immunized with a KLH conjugated synthetic peptide between 650-677 amino acids from the C-terminal region of human EPB41L4B.
Clone:	RB19626
Isotype:	Ig Fraction
Purification:	This antibody is prepared by Saturated Ammonium Sulfate (SAS) precipitation followed by dialysis against PBS.

Target Details

Target:	EPB41L4B
Alternative Name:	EPB41L4B ( <a href="#">EPB41L4B Products</a> )

## Target Details

Molecular Weight:	99712
Gene ID:	54566
NCBI Accession:	<a href="#">NP_060894</a> , <a href="#">NP_061987</a>
UniProt:	<a href="#">Q9H329</a>

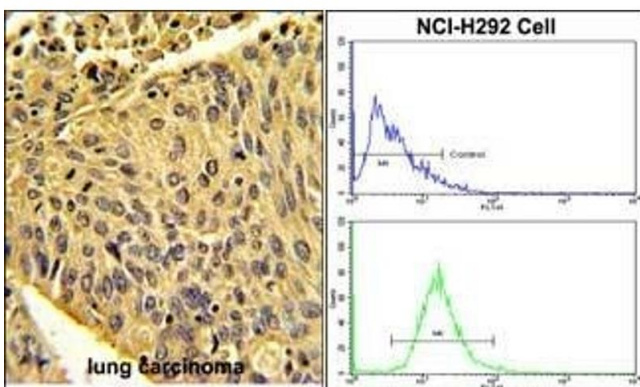
## Application Details

Application Notes:	WB: 1:1000. IHC-P: 1:50~100
Restrictions:	For Research Use only

## Handling

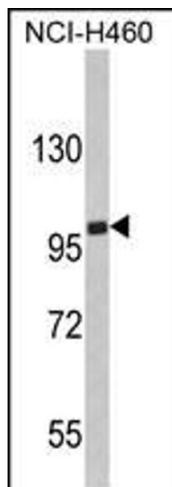
Format:	Liquid
Buffer:	Purified polyclonal antibody supplied in PBS with 0.09 % (W/V) sodium azide.
Preservative:	Sodium azide
Precaution of Use:	This product contains Sodium azide: a POISONOUS AND HAZARDOUS SUBSTANCE which should be handled by trained staff only.
Storage:	4 °C, -20 °C
Storage Comment:	Maintain refrigerated at 2-8 °C for up to 6 months. For long term storage store at -20 °C in small aliquots to prevent freeze-thaw cycles.
Expiry Date:	6 months

## Images



### Immunohistochemistry (Paraffin-embedded Sections)

**Image 1.** (LEFT) Formalin-fixed and paraffin-embedded human lung carcinoma with EPB41L4B Antibody (C-term), which was peroxidase-conjugated to the secondary antibody, followed by DAB staining. This data demonstrates the use of this antibody for immunohistochemistry, clinical relevance has not been evaluated. (RIGHT) Flow cytometric analysis of NCI- cells using EPB41L4B Antibody (C-term) (bottom histogram) compared to a negative control



cell (top histogram). FITC-conjugated goat-anti-rabbit secondary antibodies were used for the analysis.

### Western Blotting

**Image 2.** Western blot analysis of EPB41L4B Antibody (C-term) (ABIN390834 and ABIN2841060) in NCI- cell line lysates (35 µg/lane). EPB41L4B (arrow) was detected using the purified Pab.(2 µg/mL)