

Datasheet for ABIN390835
anti-FHL1 antibody (C-Term)[Go to Product page](#)

4 Images

Overview

Quantity:	400 µL
Target:	FHL1
Binding Specificity:	AA 214-240, C-Term
Reactivity:	Human
Host:	Rabbit
Clonality:	Polyclonal
Conjugate:	This FHL1 antibody is un-conjugated
Application:	Western Blotting (WB), Flow Cytometry (FACS), Immunohistochemistry (Paraffin-embedded Sections) (IHC (p))

Product Details

Immunogen:	This FHL1 antibody is generated from rabbits immunized with a KLH conjugated synthetic peptide between 214-240 amino acids from the C-terminal region of human FHL1.
Clone:	RB19645
Isotype:	Ig Fraction
Purification:	This antibody is prepared by Saturated Ammonium Sulfate (SAS) precipitation followed by dialysis against PBS.

Target Details

Target:	FHL1
Alternative Name:	FHL1 (FHL1 Products)

Target Details

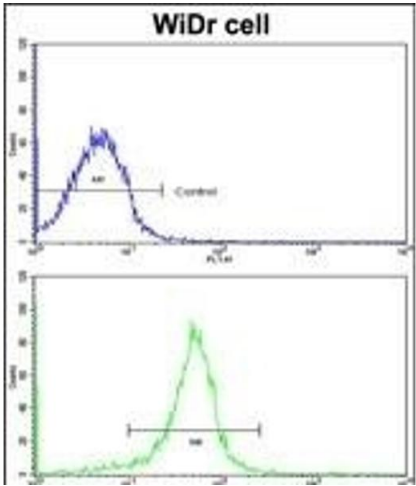
Background:	FHL1 is a member of the four-and-a-half-LIM-only protein family. Family members contain two highly conserved, tandemly arranged, zinc finger domains with four highly conserved cysteines binding a zinc atom in each zinc finger. Expression of these family members occurs in a cell- and tissue-specific mode and these proteins are involved in many cellular processes.
Molecular Weight:	36263
Gene ID:	2273
NCBI Accession:	NP_001153171 , NP_001153172 , NP_001153173 , NP_001153174 , NP_001153175 , NP_001153176 , NP_001161291 , NP_001440
UniProt:	Q13642

Application Details

Application Notes:	WB: 1:1000. WB: 1:1000. IHC-P: 1:50~100. FC: 1:10~50
Restrictions:	For Research Use only

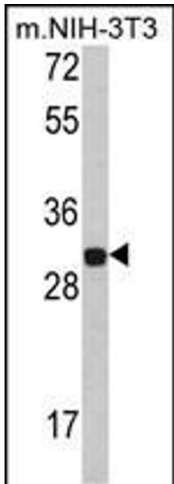
Handling

Format:	Liquid
Buffer:	Purified polyclonal antibody supplied in PBS with 0.09 % (W/V) sodium azide.
Preservative:	Sodium azide
Precaution of Use:	This product contains Sodium azide: a POISONOUS AND HAZARDOUS SUBSTANCE which should be handled by trained staff only.
Storage:	4 °C,-20 °C
Storage Comment:	Maintain refrigerated at 2-8 °C for up to 6 months. For long term storage store at -20 °C in small aliquots to prevent freeze-thaw cycles.
Expiry Date:	6 months



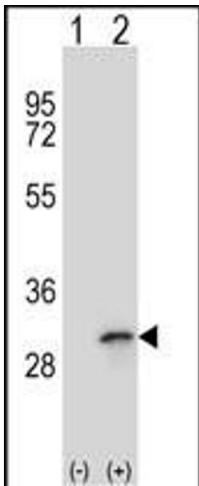
Flow Cytometry

Image 1. Flow cytometric analysis of widr cells using FHL1 Antibody (C-term)(bottom histogram) compared to a negative control cell (top histogram). FITC-conjugated goat-anti-rabbit secondary antibodies were used for the analysis.



Western Blotting

Image 2. Western blot analysis of FHL1 Antibody (C-term) (ABIN390835 and ABIN2841061) in NIH-3T3 cell line lysates (35 µg/lane). FHL1 (arrow) was detected using the purified Pab.



Western Blotting

Image 3. Western blot analysis of FHL1 (arrow) using rabbit polyclonal FHL1 Antibody (C-term) (ABIN390835 and ABIN2841061). 293 cell lysates (2 µg/lane) either nontransfected (Lane 1) or transiently transfected (Lane 2) with the FHL1 gene.

Please check the [product details page](#) for more images. Overall 4 images are available for ABIN390835.