

Datasheet for ABIN390837
anti-WSB2 antibody (C-Term)[Go to Product page](#)

1 Image

Overview

Quantity:	400 µL
Target:	WSB2
Binding Specificity:	AA 375-404, C-Term
Reactivity:	Human
Host:	Rabbit
Clonality:	Polyclonal
Conjugate:	This WSB2 antibody is un-conjugated
Application:	Western Blotting (WB)

Product Details

Immunogen:	This WSB2 antibody is generated from rabbits immunized with a KLH conjugated synthetic peptide between 375-404 amino acids from the C-terminal region of human WSB2.
Clone:	RB19968
Isotype:	Ig Fraction
Predicted Reactivity:	B, M
Purification:	This antibody is purified through a protein A column, followed by peptide affinity purification.

Target Details

Target:	WSB2
Alternative Name:	WSB2 (WSB2 Products)

Target Details

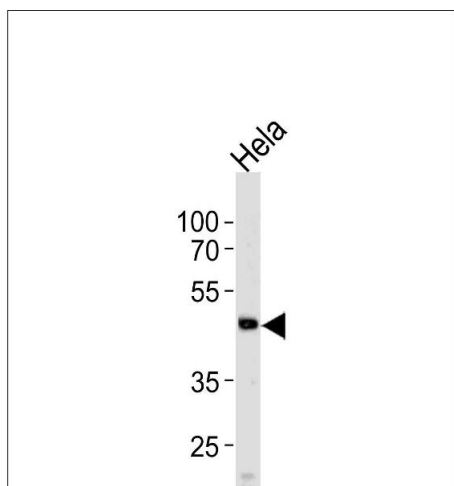
Background:	WSB2 is a member of the WD-protein subfamily. This protein contains five WD-repeats spanning most of the protein and an SOCS box in the C-terminus. The SOCS box may act as a bridge between specific substrate-binding domains and E3 ubiquitin protein ligases.
Molecular Weight:	45286
Gene ID:	55884
NCBI Accession:	NP_001265486 , NP_001265487 , NP_061109
UniProt:	Q9NYS7

Application Details

Application Notes:	WB: 1:1000
Restrictions:	For Research Use only

Handling

Format:	Liquid
Buffer:	Purified polyclonal antibody supplied in PBS with 0.09 % (W/V) sodium azide.
Preservative:	Sodium azide
Precaution of Use:	This product contains Sodium azide: a POISONOUS AND HAZARDOUS SUBSTANCE which should be handled by trained staff only.
Storage:	4 °C, -20 °C
Storage Comment:	Maintain refrigerated at 2-8 °C for up to 6 months. For long term storage store at -20 °C in small aliquots to prevent freeze-thaw cycles.
Expiry Date:	6 months



Western Blotting

Image 1. Western blot analysis of lysate from HeLa cell line, using WSB2 Antibody (C-term) (ABIN390837 and ABIN2841062). (ABIN390837 and ABIN2841062) was diluted at 1:1000 at each lane. A goat anti-rabbit IgG H&L(HRP) at 1:5000 dilution was used as the secondary antibody. Lysate at 35 µg per lane.