

Datasheet for ABIN390841
anti-SRSF1 antibody (C-Term)[Go to Product page](#)

4 Images

Overview

Quantity:	400 µL
Target:	SRSF1
Binding Specificity:	AA 158-186, C-Term
Reactivity:	Human
Host:	Rabbit
Clonality:	Polyclonal
Conjugate:	This SRSF1 antibody is un-conjugated
Application:	Western Blotting (WB), Immunohistochemistry (Paraffin-embedded Sections) (IHC (p)), Flow Cytometry (FACS)

Product Details

Immunogen:	This SFRS1 antibody is generated from rabbits immunized with a KLH conjugated synthetic peptide between 158-186 amino acids from the C-terminal region of human SFRS1.
Clone:	RB20788
Isotype:	Ig Fraction
Predicted Reactivity:	Zf, B, C, M, Pig
Purification:	This antibody is prepared by Saturated Ammonium Sulfate (SAS) precipitation followed by dialysis against PBS.

Target Details

Target:	SRSF1
---------	-------

Target Details

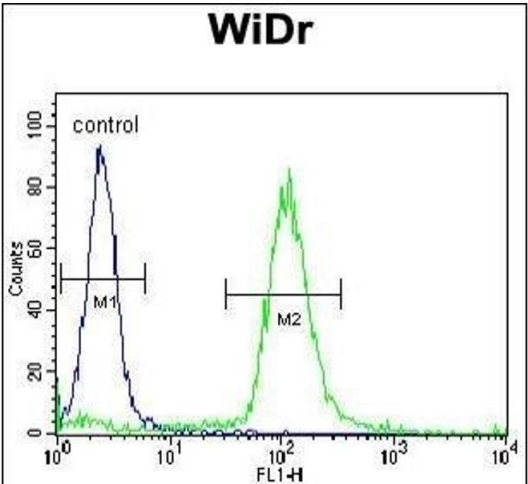
Alternative Name:	SFRS1 (SRSF1 Products)
Background:	SFRS1 is a member of the arginine/serine-rich splicing factor protein family, and functions in both constitutive and alternative pre-mRNA splicing. The protein binds to pre-mRNA transcripts and components of the spliceosome, and can either activate or repress splicing depending on the location of the pre-mRNA binding site. The protein's ability to activate splicing is regulated by phosphorylation and interactions with other splicing factor associated proteins.
Molecular Weight:	27745
Gene ID:	6426
NCBI Accession:	NP_001071634 , NP_008855
UniProt:	Q07955
Pathways:	Ribonucleoprotein Complex Subunit Organization

Application Details

Application Notes:	WB: 1:1000. WB: 1:1000. IHC-P: 1:50~100. FC: 1:10~50
Restrictions:	For Research Use only

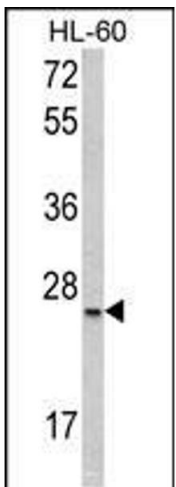
Handling

Format:	Liquid
Buffer:	Purified polyclonal antibody supplied in PBS with 0.09 % (W/V) sodium azide.
Preservative:	Sodium azide
Precaution of Use:	This product contains Sodium azide: a POISONOUS AND HAZARDOUS SUBSTANCE which should be handled by trained staff only.
Storage:	4 °C,-20 °C
Storage Comment:	Maintain refrigerated at 2-8 °C for up to 6 months. For long term storage store at -20 °C in small aliquots to prevent freeze-thaw cycles.
Expiry Date:	6 months



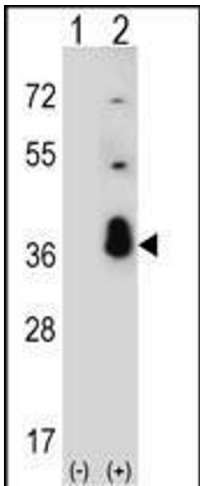
Flow Cytometry

Image 1. SFRS1 Antibody (C-term) (ABIN390841 and ABIN2841068) flow cytometric analysis of WiDr cells (right histogram) compared to a negative control cell (left histogram). FITC-conjugated goat-anti-rabbit secondary antibodies were used for the analysis.



Western Blotting

Image 2. Western blot analysis of SFRS1 Antibody (C-term) (ABIN390841 and ABIN2841068) in HL-60 cell line lysates (35 µg/lane). SFRS1 (arrow) was detected using the purified Pab.



Western Blotting

Image 3. Western blot analysis of SFRS1 (arrow) using rabbit polyclonal SFRS1 Antibody (C-term) (ABIN390841 and ABIN2841068). 293 cell lysates (2 µg/lane) either nontransfected (Lane 1) or transiently transfected (Lane 2) with the SFRS1 gene.

Please check the [product details page](#) for more images. Overall 4 images are available for ABIN390841.