

Datasheet for ABIN390843  
**anti-ASPA antibody (N-Term)**

## 5 Images

[Go to Product page](#)

## Overview

Quantity:	400 µL
Target:	ASPA
Binding Specificity:	AA 82-110, N-Term
Reactivity:	Human
Host:	Rabbit
Clonality:	Polyclonal
Conjugate:	This ASPA antibody is un-conjugated
Application:	Western Blotting (WB), Immunofluorescence (IF), Immunohistochemistry (Paraffin-embedded Sections) (IHC (p)), Flow Cytometry (FACS)

## Product Details

Immunogen:	This ASPA antibody is generated from rabbits immunized with a KLH conjugated synthetic peptide between 82-110 amino acids from the N-terminal region of human ASPA.
Clone:	RB20918
Isotype:	Ig Fraction
Predicted Reactivity:	B
Purification:	This antibody is prepared by Saturated Ammonium Sulfate (SAS) precipitation followed by dialysis against PBS.

## Target Details

Target:	ASPA
---------	------

## Target Details

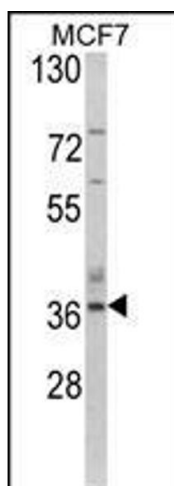
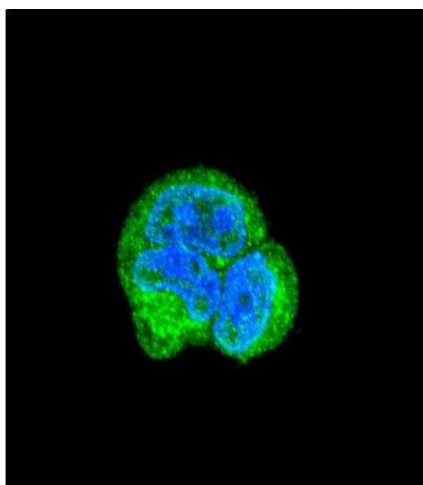
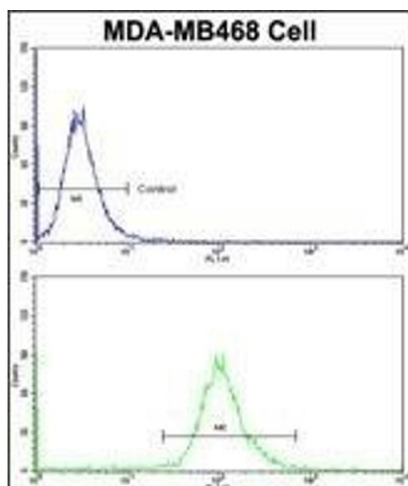
Alternative Name:	ASPA ( <a href="#">ASPA Products</a> )
Background:	ASPA is an enzyme that catalyzes the conversion of N-acetyl_L-aspartic acid (NAA) to aspartate and acetate. NAA is abundant in the brain where hydrolysis by aspartoacylase is thought to help maintain white matter. This protein is an NAA scavenger in other tissues.
Molecular Weight:	35735
Gene ID:	443
NCBI Accession:	<a href="#">NP_000040</a> , <a href="#">NP_001121557</a>
UniProt:	<a href="#">P45381</a>

## Application Details

Application Notes:	IF: 1:10~50. WB: 1:1000. WB: 1:1000. IHC-P: 1:50~100. FC: 1:10~50
Restrictions:	For Research Use only

## Handling

Format:	Liquid
Buffer:	Purified polyclonal antibody supplied in PBS with 0.09 % (W/V) sodium azide.
Preservative:	Sodium azide
Precaution of Use:	This product contains Sodium azide: a POISONOUS AND HAZARDOUS SUBSTANCE which should be handled by trained staff only.
Storage:	4 °C,-20 °C
Storage Comment:	Maintain refrigerated at 2-8 °C for up to 6 months. For long term storage store at -20 °C in small aliquots to prevent freeze-thaw cycles.
Expiry Date:	6 months



### Flow Cytometry

**Image 1.** Flow cytometric analysis of MDA-M cells using AS Antibody (N-term)(bottom histogram) compared to a negative control cell (top histogram). FITC-conjugated goat-anti-rabbit secondary antibodies were used for the analysis.

### Immunofluorescence

**Image 2.** Confocal immunofluorescent analysis of AS Antibody (N-term) (ABIN390843 and ABIN2841069) with MCF-7 cell followed by Alexa Fluor® 488-conjugated goat anti-rabbit IgG (green). DAPI was used to stain the cell nuclear (blue).

### Western Blotting

**Image 3.** Western blot analysis of AS Antibody (N-term) (ABIN390843 and ABIN2841069) in MCF7 cell line lysates (35 µg/lane). AS (arrow) was detected using the purified b.

Please check the [product details page](#) for more images. Overall 5 images are available for ABIN390843.