

Datasheet for ABIN390854
anti-Corin antibody (AA 459-490)[Go to Product page](#)

2 Images

Overview

Quantity:	400 µL
Target:	Corin (CORIN)
Binding Specificity:	AA 459-490
Reactivity:	Human, Mouse
Host:	Rabbit
Clonality:	Polyclonal
Conjugate:	This Corin antibody is un-conjugated
Application:	Western Blotting (WB)

Product Details

Immunogen:	This CORIN antibody is generated from rabbits immunized with a KLH conjugated synthetic peptide between 459-490 amino acids from the Central region of human CORIN.
Clone:	RB18116
Isotype:	Ig Fraction
Purification:	This antibody is purified through a protein A column, followed by peptide affinity purification.

Target Details

Target:	Corin (CORIN)
Alternative Name:	CORIN (CORIN Products)
Background:	CORIN is a member of the type II transmembrane serine protease class of the trypsin

Target Details

superfamily. Members of this family are composed of multiple structurally distinct domains. This protein converts pro-atrial natriuretic peptide to biologically active atrial natriuretic peptide, a cardiac hormone that regulates blood volume and pressure. This protein may also function as a pro-brain-type natriuretic peptide convertase.

Molecular Weight: 116486

Gene ID: 10699

NCBI Accession: [NP_001265514](#), [NP_006578](#)

UniProt: [Q9Y5Q5](#)

Pathways: [Regulation of Systemic Arterial Blood Pressure by Hormones](#)

Application Details

Application Notes: WB: 1:1000. WB: 1:1000

Restrictions: For Research Use only

Handling

Format: Liquid

Buffer: Purified polyclonal antibody supplied in PBS with 0.09 % (W/V) sodium azide.

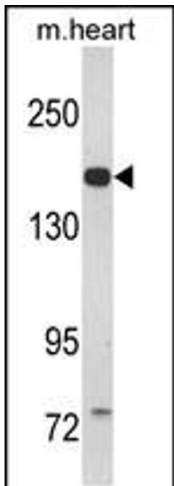
Preservative: Sodium azide

Precaution of Use: This product contains Sodium azide: a POISONOUS AND HAZARDOUS SUBSTANCE which should be handled by trained staff only.

Storage: 4 °C,-20 °C

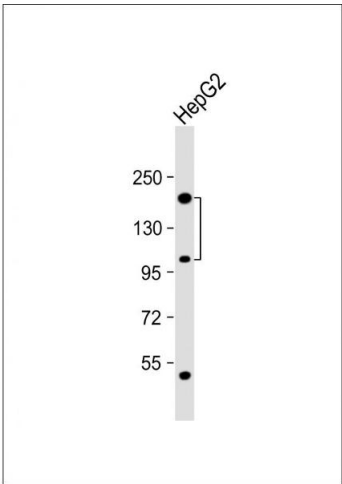
Storage Comment: Maintain refrigerated at 2-8 °C for up to 6 months. For long term storage store at -20 °C in small aliquots to prevent freeze-thaw cycles.

Expiry Date: 6 months



Western Blotting

Image 1. Western blot analysis of CORIN Antibody (Center) (ABIN390854 and ABIN2841076) in mouse heart tissue lysates (35 µg/lane). CORIN (arrow) was detected using the purified Pab.



Western Blotting

Image 2. Anti-CORIN Antibody (Center) at 1:1000 dilution + HepG2 whole cell lysate Lysates/proteins at 20 µg per lane. Secondary Goat Anti-Rabbit IgG, (H+L), Peroxidase conjugated at 1/10000 dilution. Predicted band size : 116 kDa Blocking/Dilution buffer: 5 % NFDm/TBST.