

Datasheet for ABIN390856
anti-RASIP1 antibody (AA 651-678)[Go to Product page](#)

4 Images

1 Publication

Overview

Quantity:	400 µL
Target:	RASIP1
Binding Specificity:	AA 651-678
Reactivity:	Human
Host:	Rabbit
Clonality:	Polyclonal
Conjugate:	This RASIP1 antibody is un-conjugated
Application:	Western Blotting (WB), Flow Cytometry (FACS), Immunohistochemistry (Paraffin-embedded Sections) (IHC (p))

Product Details

Immunogen:	This RASIP1 antibody is generated from rabbits immunized with a KLH conjugated synthetic peptide between 651-678 amino acids from the Central region of human RASIP1.
Clone:	RB19819
Isotype:	Ig Fraction
Purification:	This antibody is purified through a protein A column, followed by peptide affinity purification.

Target Details

Target:	RASIP1
Alternative Name:	RASIP1 (RASIP1 Products)

Target Details

Background: RASIP1 may act as effector for Golgi-bound HRAS and other Ras-like proteins. May promote HRAS-mediated transformation.

Gene ID: 54922

NCBI Accession: [NP_060275](#)

UniProt: [Q5U651](#)

Application Details

Application Notes: WB: 1:1000. WB: 1:2000. IHC-P: 1:50~100. FC: 1:25

Restrictions: For Research Use only

Handling

Format: Liquid

Buffer: Purified polyclonal antibody supplied in PBS with 0.09 % (W/V) sodium azide.

Preservative: Sodium azide

Precaution of Use: This product contains Sodium azide: a POISONOUS AND HAZARDOUS SUBSTANCE which should be handled by trained staff only.

Storage: 4 °C, -20 °C

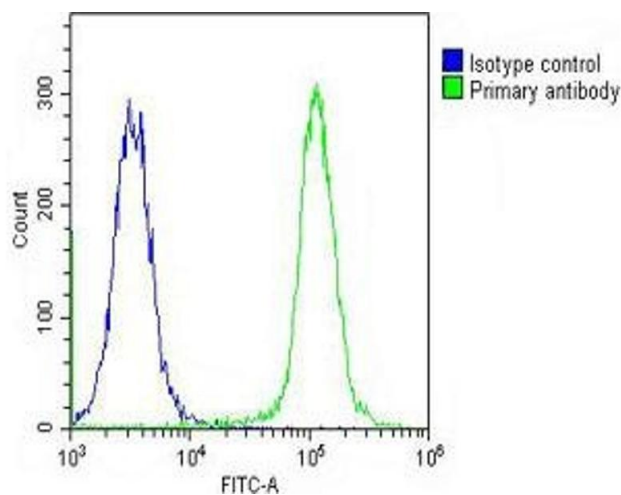
Storage Comment: Maintain refrigerated at 2-8 °C for up to 6 months. For long term storage store at -20 °C in small aliquots to prevent freeze-thaw cycles.

Expiry Date: 6 months

Publications

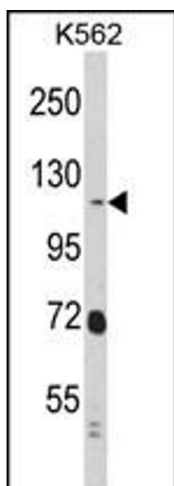
Product cited in: Humphrey, Newcomb, Yu, Hao, Yu, Krajewski, Du, Jhala: "Mixed lineage kinase-3 stabilizes and functionally cooperates with TRIBBL-3 to compromise mitochondrial integrity in cytokine-induced death of pancreatic beta cells." in: **The Journal of biological chemistry**, Vol. 285, Issue 29, pp. 22426-36, (2010) ([PubMed](#)).

Nagao, Hayashi: "Mixed lineage kinase 2 and hippocampin are localized in Lewy bodies of Parkinson's disease." in: **Journal of the neurological sciences**, Vol. 281, Issue 1-2, pp. 51-4, (2009) ([PubMed](#)).



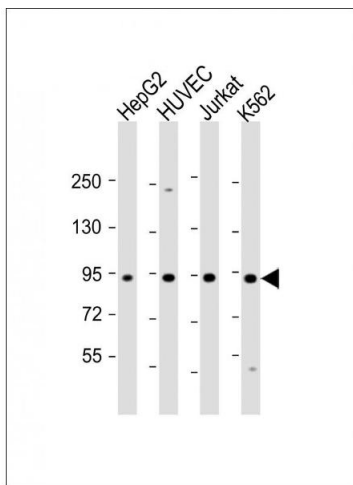
Flow Cytometry

Image 1. Overlay histogram showing K562 cells stained with (ABIN390856 and ABIN2841078) (green line). The cells were fixed with 2 % paraformaldehyde (10 min) and then permeabilized with 90 % methanol for 10 min. The cells were then incubated in 2 % bovine serum albumin to block non-specific protein-protein interactions followed by the antibody ((ABIN390856 and ABIN2841078), 1:25 dilution) for 60 min at 37 °C. The secondary antibody used was Goat-Anti-Rabbit IgG, DyLight® 488 Conjugated Highly Cross-Adsorbed(OH191631) at 1/200 dilution for 40 min at 37 °C. Isotype control antibody (blue line) was rabbit IgG (1 µg/1x10⁶ cells) used under the same conditions. Acquisition of >10,000 events was performed.



Western Blotting

Image 2. Western blot analysis of RASIP1 Antibody (Center) (ABIN390856 and ABIN2841078) in K562 cell line lysates (35 µg/lane). RASIP1 (arrow) was detected using the purified Pab.



Western Blotting

Image 3. All lanes : Anti-RASIP1 Antibody (Center) at 1:2000 dilution Lane 1: HepG2 whole cell lysate Lane 2: HUVEC whole cell lysate Lane 3: Jurkat whole cell lysate Lane 4: K562 whole cell lysate Lysates/proteins at 20 µg per lane. Secondary Goat Anti-Rabbit IgG, (H+L), Peroxidase conjugated at 1/10000 dilution. Predicted band size : 103 kDa Blocking/Dilution buffer: 5 % NFDm/TBST.

Please check the [product details page](#) for more images. Overall 4 images are available for ABIN390856.