

Datasheet for ABIN390860
anti-PAX8 antibody (AA 285-313)[Go to Product page](#)

4 Images

Overview

Quantity:	400 µL
Target:	PAX8
Binding Specificity:	AA 285-313
Reactivity:	Human
Host:	Rabbit
Clonality:	Polyclonal
Conjugate:	This PAX8 antibody is un-conjugated
Application:	Western Blotting (WB), Flow Cytometry (FACS), Immunohistochemistry (Paraffin-embedded Sections) (IHC (p))

Product Details

Immunogen:	This PAX8 antibody is generated from rabbits immunized with a KLH conjugated synthetic peptide between 285-313 amino acids from the Central region of human PAX8.
Clone:	RB20218
Isotype:	Ig Fraction
Predicted Reactivity:	M
Purification:	This antibody is purified through a protein A column, followed by peptide affinity purification.

Target Details

Target:	PAX8
---------	------

Target Details

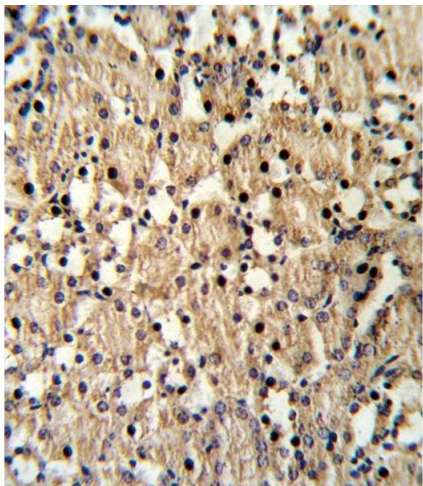
Alternative Name:	PAX8 (PAX8 Products)
Background:	PAX8 is a member of the paired box (PAX) family of transcription factors. Members of this family contain a paired box domain, an octapeptide, and a paired-type homeodomain. This nuclear protein is involved in thyroid follicular cell development and expression of thyroid-specific genes.
Molecular Weight:	48218
Gene ID:	7849
NCBI Accession:	NP_003457 , NP_039246 , NP_039247 , NP_054698
UniProt:	Q06710
Pathways:	Thyroid Hormone Synthesis , Regulation of Hormone Metabolic Process , Stem Cell Maintenance , Tube Formation

Application Details

Application Notes:	WB: 1:1000. WB: 1:1000. IHC-P: 1:10~50. FC: 1:10~50
Restrictions:	For Research Use only

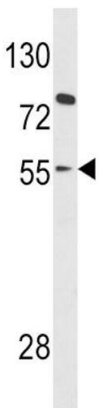
Handling

Format:	Liquid
Buffer:	Purified polyclonal antibody supplied in PBS with 0.09 % (W/V) sodium azide.
Preservative:	Sodium azide
Precaution of Use:	This product contains Sodium azide: a POISONOUS AND HAZARDOUS SUBSTANCE which should be handled by trained staff only.
Storage:	4 °C,-20 °C
Storage Comment:	Maintain refrigerated at 2-8 °C for up to 6 months. For long term storage store at -20 °C in small aliquots to prevent freeze-thaw cycles.
Expiry Date:	6 months



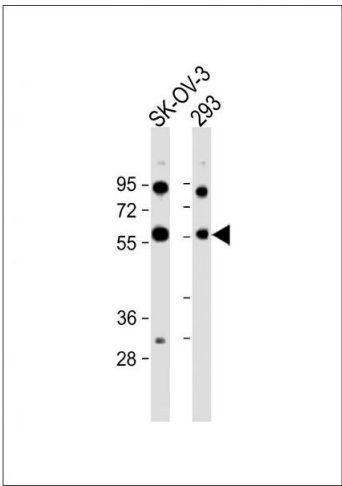
Immunohistochemistry (Paraffin-embedded Sections)

Image 1. Formalin-fixed and raffin-embedded mouse kidney reacted with X8 Antibody (Center), which was peroxidase-conjugated to the secondary antibody, followed by DAB staining. This data demonstrates the use of this antibody for immunohistochemistry, clinical relevance has not been evaluated.



Western Blotting

Image 2. Western blot analysis of X8 Antibody (Center) (ABIN390860 and ABIN2841080) in HL-60 cell line lysates (35 µg/lane). X8 (arrow) was detected using the purified b.



Western Blotting

Image 3. All lanes : Anti-X8 Antibody (Center) at 1:1000 dilution Lane 1: SK-OV-3 whole cell lysate Lane 2: 293 whole cell lysate Lysates/proteins at 20 µg per lane. Secondary Goat Anti-Rabbit IgG, (H+L), Peroxidase conjugated at 1/10000 dilution. Predicted band size : 48 kDa Blocking/Dilution buffer: 5 % NFDm/TBST.

Please check the [product details page](#) for more images. Overall 4 images are available for ABIN390860.