



[Go to Product page](#)

Datasheet for ABIN390871

## anti-DLX2 antibody (AA 194-222)

2 Images

1 Publication

### Overview

Quantity:	400 µL
Target:	DLX2
Binding Specificity:	AA 194-222
Reactivity:	Human
Host:	Rabbit
Clonality:	Polyclonal
Conjugate:	This DLX2 antibody is un-conjugated
Application:	Western Blotting (WB), Immunohistochemistry (Paraffin-embedded Sections) (IHC (p))

### Product Details

Immunogen:	This DLX2 antibody is generated from rabbits immunized with a KLH conjugated synthetic peptide between 194-222 amino acids from the Central region of human DLX2.
Clone:	RB21017
Isotype:	Ig Fraction
Purification:	This antibody is purified through a protein A column, followed by peptide affinity purification.

### Target Details

Target:	DLX2
Alternative Name:	DLX2 ( <a href="#">DLX2 Products</a> )
Background:	DLX2 is likely to play a regulatory role in the development of the ventral forebrain. It may play a

## Target Details

---

role in craniofacial patterning and morphogenesis. Subcellular location: Nucleus (Potential).

Molecular Weight: 34243

Gene ID: 1746

NCBI Accession: [NP\\_004396](#)

UniProt: [Q07687](#)

## Application Details

---

Application Notes: WB: 1:1000. IHC-P: 1:50~100

Restrictions: For Research Use only

## Handling

---

Format: Liquid

Buffer: Purified polyclonal antibody supplied in PBS with 0.09 % (W/V) sodium azide.

Preservative: Sodium azide

Precaution of Use: This product contains Sodium azide: a POISONOUS AND HAZARDOUS SUBSTANCE which should be handled by trained staff only.

Storage: 4 °C,-20 °C

Storage Comment: Maintain refrigerated at 2-8 °C for up to 6 months. For long term storage store at -20 °C in small aliquots to prevent freeze-thaw cycles.

Expiry Date: 6 months

## Publications

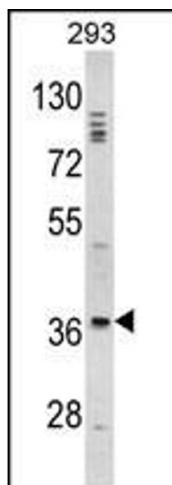
---

Product cited in: Xu, Han, Epstein, Liu. "Regulation of PDK mRNA by high fatty acid and glucose in pancreatic islets." in: **Biochemical and biophysical research communications**, Vol. 344, Issue 3, pp. 827-33, (2006) ([PubMed](#)).



### Immunohistochemistry (Paraffin-embedded Sections)

**Image 1.** Formalin-fixed and paraffin-embedded human brain tissue reacted with DLX2 Antibody (Center), which was peroxidase-conjugated to the secondary antibody, followed by DAB staining. This data demonstrates the use of this antibody for immunohistochemistry, clinical relevance has not been evaluated.



### Western Blotting

**Image 2.** Western blot analysis of DLX2 Antibody (Center) (ABIN390871 and ABIN2841087) in 293 cell line lysates (35 µg/lane). DLX2 (arrow) was detected using the purified Pab.