

Datasheet for ABIN390872

anti-HLA-DRB1 antibody (AA 30-58)



[Go to Product page](#)

4 Images

Overview

Quantity:	400 µL
Target:	HLA-DRB1
Binding Specificity:	AA 30-58
Reactivity:	Human
Host:	Rabbit
Clonality:	Polyclonal
Conjugate:	This HLA-DRB1 antibody is un-conjugated
Application:	Western Blotting (WB), Flow Cytometry (FACS), Immunohistochemistry (Paraffin-embedded Sections) (IHC (p))

Product Details

Immunogen:	This HLA-D ₁ antibody is generated from rabbits immunized with a KLH conjugated synthetic peptide between 30-58 amino acids of human HLA-D ₁ .
Clone:	RB21019
Isotype:	Ig Fraction
Purification:	This antibody is purified through a protein A column, followed by peptide affinity purification.

Target Details

Target:	HLA-DRB1
Alternative Name:	HLA-DRB1 (HLA-DRB1 Products)

Target Details

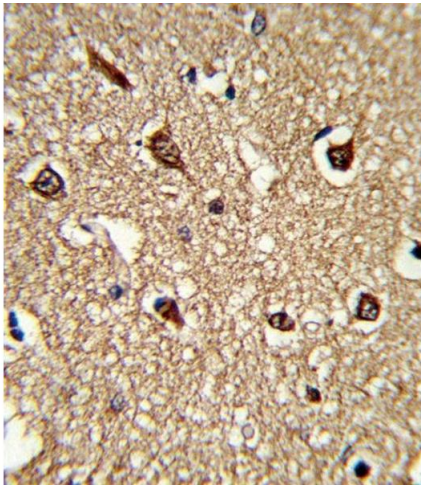
Background:	HLA-DRB1 belongs to the HLA class II beta chain paralogs. The class II molecule is a heterodimer consisting of an alpha (DRA) and a beta chain (DRB), both anchored in the membrane. It plays a central role in the immune system by presenting peptides derived from extracellular proteins. Class II molecules are expressed in antigen presenting cells (APC: B lymphocytes, dendritic cells, macrophages). The beta chain is approximately 26-28 kDa. It is encoded by 6 exons.
Gene ID:	3123
UniProt:	P04229
Pathways:	TCR Signaling , Positive Regulation of Peptide Hormone Secretion , Production of Molecular Mediator of Immune Response , CXCR4-mediated Signaling Events , Cancer Immune Checkpoints , Human Leukocyte Antigen (HLA) in Adaptive Immune Response

Application Details

Application Notes:	WB: 1:1000. WB: 1:1000. IHC-P: 1:10~50. FC: 1:10~50
Restrictions:	For Research Use only

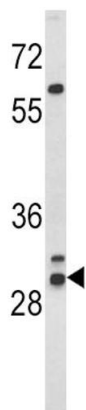
Handling

Format:	Liquid
Buffer:	Purified polyclonal antibody supplied in PBS with 0.09 % (W/V) sodium azide.
Preservative:	Sodium azide
Precaution of Use:	This product contains Sodium azide: a POISONOUS AND HAZARDOUS SUBSTANCE which should be handled by trained staff only.
Storage:	4 °C,-20 °C
Storage Comment:	Maintain refrigerated at 2-8 °C for up to 6 months. For long term storage store at -20 °C in small aliquots to prevent freeze-thaw cycles.
Expiry Date:	6 months



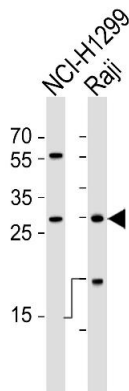
Immunohistochemistry (Paraffin-embedded Sections)

Image 1. Formalin-fixed and paraffin-embedded human brain tissue reacted with HLA-DRB1 Antibody (N-term), which was peroxidase-conjugated to the secondary antibody, followed by DAB staining. This data demonstrates the use of this antibody for immunohistochemistry, clinical relevance has not been evaluated.



Western Blotting

Image 2. Western blot analysis of HLA-DRB1 Antibody (N-term) (ABIN390872 and ABIN2841088) in WiDr cell line lysates (35 µg/lane). HLA-DRB1 (arrow) was detected using the purified Pab.



Western Blotting

Image 3. Western blot analysis of lysates from NCI-, Raji cell line (from left to right), using HLA-DRB1 Antibody (N-term) (ABIN390872 and ABIN2841088). (ABIN390872 and ABIN2841088) was diluted at 1:1000 at each lane. A goat anti-rabbit IgG H&L(HRP) at 1:5000 dilution was used as the secondary antibody. Lysates at 35 µg per lane.

Please check the [product details page](#) for more images. Overall 4 images are available for ABIN390872.