



[Go to Product page](#)

Datasheet for ABIN390873
anti-FTH1 antibody (C-Term)

4 Images

Overview

Quantity:	400 µL
Target:	FTH1
Binding Specificity:	AA 154-183, C-Term
Reactivity:	Human
Host:	Rabbit
Clonality:	Polyclonal
Conjugate:	This FTH1 antibody is un-conjugated
Application:	Western Blotting (WB), Flow Cytometry (FACS), Immunohistochemistry (Paraffin-embedded Sections) (IHC (p))

Product Details

Immunogen:	This FTH1 antibody is generated from rabbits immunized with a KLH conjugated synthetic peptide between 154-183 amino acids from the C-terminal region of human FTH1.
Clone:	RB21026
Isotype:	Ig Fraction
Purification:	This antibody is purified through a protein A column, followed by peptide affinity purification.

Target Details

Target:	FTH1
Alternative Name:	FTH1 (FTH1 Products)

Target Details

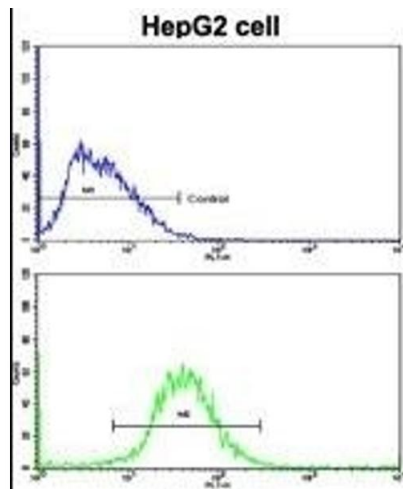
Background:	FTH1 is the heavy subunit of ferritin, the major intracellular iron storage protein in prokaryotes and eukaryotes. It is composed of 24 subunits of the heavy and light ferritin chains. Variation in ferritin subunit composition may affect the rates of iron uptake and release in different tissues. A major function of ferritin is the storage of iron in a soluble and nontoxic state. Defects in ferritin proteins are associated with several neurodegenerative diseases.
Molecular Weight:	21226
Gene ID:	2495
NCBI Accession:	NP_002023
UniProt:	P02794
Pathways:	Transition Metal Ion Homeostasis

Application Details

Application Notes:	WB: 1:1000. WB: 1:1000. IHC-P: 1:50~100. FC: 1:10~50
Restrictions:	For Research Use only

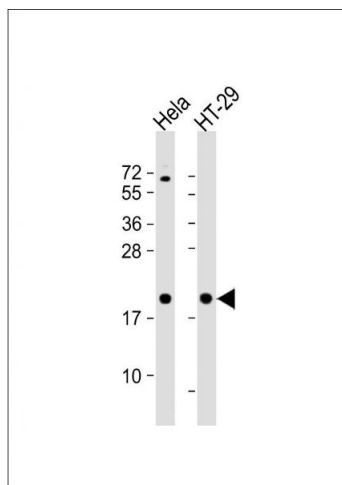
Handling

Format:	Liquid
Buffer:	Purified polyclonal antibody supplied in PBS with 0.09 % (W/V) sodium azide.
Preservative:	Sodium azide
Precaution of Use:	This product contains Sodium azide: a POISONOUS AND HAZARDOUS SUBSTANCE which should be handled by trained staff only.
Storage:	4 °C, -20 °C
Storage Comment:	Maintain refrigerated at 2-8 °C for up to 6 months. For long term storage store at -20 °C in small aliquots to prevent freeze-thaw cycles.
Expiry Date:	6 months



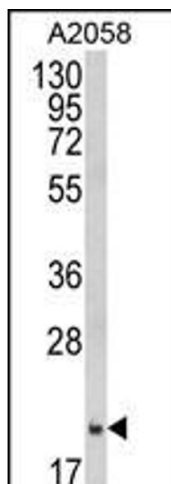
Flow Cytometry

Image 1. Flow cytometric analysis of HepG2 cells using FTH1 Antibody (C-term)(bottom histogram) compared to a negative control cell (top histogram). FITC-conjugated goat-anti-rabbit secondary antibodies were used for the analysis.



Western Blotting

Image 2. All lanes : Anti-FTH1 Antibody (C-term) at 1:1000 dilution Lane 1: HeLa whole cell lysate Lane 2: HT-29 whole cell lysate Lysates/proteins at 20 µg per lane. Secondary Goat Anti-Rabbit IgG, (H+L), Peroxidase conjugated at 1/10000 dilution. Predicted band size : 21 kDa Blocking/Dilution buffer: 5 % NFDm/TBST.



Western Blotting

Image 3. Western blot analysis of FTH1 Antibody (C-term) (ABIN390873 and ABIN2841089) in cell line lysates (35 µg/lane). FTH1 (arrow) was detected using the purified Pab.

Please check the [product details page](#) for more images. Overall 4 images are available for ABIN390873.