



[Go to Product page](#)

Datasheet for ABIN390879
anti-GLUL antibody (N-Term)

6 Images

Overview

Quantity:	400 µL
Target:	GLUL
Binding Specificity:	AA 70-96, N-Term
Reactivity:	Human, Mouse
Host:	Rabbit
Clonality:	Polyclonal
Conjugate:	This GLUL antibody is un-conjugated
Application:	Western Blotting (WB), Immunohistochemistry (Paraffin-embedded Sections) (IHC (p))

Product Details

Immunogen:	This GLUL antibody is generated from rabbits immunized with a KLH conjugated synthetic peptide between 70-96 amino acids from the N-terminal region of human GLUL.
Clone:	RB21070
Isotype:	Ig Fraction
Predicted Reactivity:	B, C, Pr, Pig
Purification:	This antibody is purified through a protein A column, followed by peptide affinity purification.

Target Details

Target:	GLUL
Alternative Name:	GLUL (GLUL Products)

Target Details

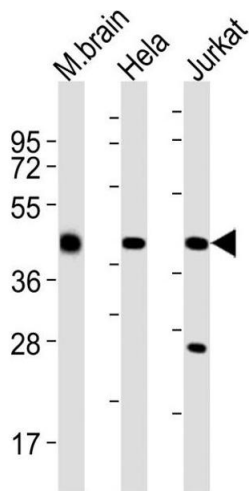
Background:	GLUL belongs to the glutamine synthetase family. It catalyzes the synthesis of glutamine from glutamate and ammonia. Glutamine is a main source of energy and is involved in cell proliferation, inhibition of apoptosis, and cell signaling.
Molecular Weight:	42064
Gene ID:	2752
NCBI Accession:	NP_001028216 , NP_001028228 , NP_002056
UniProt:	P15104
Pathways:	Positive Regulation of Peptide Hormone Secretion

Application Details

Application Notes:	WB: 1:2000. WB: 1:1000. WB: 1:2000. WB: 1:2000. WB: 1:2000. WB: 1:1000. WB: 1:2000
Restrictions:	For Research Use only

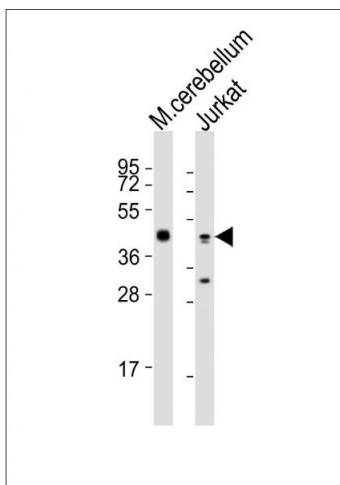
Handling

Format:	Liquid
Buffer:	Purified polyclonal antibody supplied in PBS with 0.09 % (W/V) sodium azide.
Preservative:	Sodium azide
Precaution of Use:	This product contains Sodium azide: a POISONOUS AND HAZARDOUS SUBSTANCE which should be handled by trained staff only.
Storage:	4 °C,-20 °C
Storage Comment:	Maintain refrigerated at 2-8 °C for up to 6 months. For long term storage store at -20 °C in small aliquots to prevent freeze-thaw cycles.
Expiry Date:	6 months



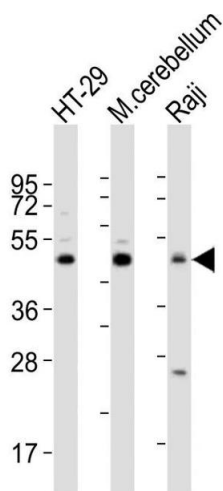
Western Blotting

Image 1. All lanes : Anti-GLUL Antibody (N-term) at 1:2000 dilution Lane 1: mouse brain lysates Lane 2: HeLa whole cell lysates Lane 3: Jurkat whole cell lysates Lysates/proteins at 20 µg per lane. Secondary Goat Anti-Rabbit IgG, (H+L), Peroxidase conjugated at 1/10000 dilution Predicted band size : 42 kDa Blocking/Dilution buffer: 5 % NFDm/TBST.



Western Blotting

Image 2. Western blot analysis of lysates from HeLa, Raji, Jurkat, HT-29 cell line (from left to right), using GLUL Antibody (N-term) (ABIN390879 and ABIN2841093). (ABIN390879 and ABIN2841093) was diluted at 1:2000 at each lane. A goat anti-rabbit IgG H&L(HRP) at 1:10000 dilution was used as the secondary antibody. Lysates at 20 µg per lane.



Western Blotting

Image 3. All lanes : Anti-GLUL Antibody (N-term) at 1:2000 dilution Lane 1: HT-29 whole cell lysates Lane 2: mouse cerebellum lysates Lane 3: Raji whole cell lysates Lysates/proteins at 20 µg per lane. Secondary Goat Anti-Rabbit IgG, (H+L), Peroxidase conjugated at 1/10000 dilution Predicted band size : 42 kDa Blocking/Dilution buffer: 5 % NFDm/TBST.

Please check the [product details page](#) for more images. Overall 6 images are available for ABIN390879.