

Datasheet for ABIN390889
anti-GALE antibody (AA 142-171)[Go to Product page](#)

4 Images

Overview

Quantity:	400 µL
Target:	GALE
Binding Specificity:	AA 142-171
Reactivity:	Human
Host:	Rabbit
Clonality:	Polyclonal
Conjugate:	This GALE antibody is un-conjugated
Application:	Western Blotting (WB), Immunofluorescence (IF), Immunohistochemistry (Paraffin-embedded Sections) (IHC (p)), Flow Cytometry (FACS)

Product Details

Immunogen:	This GALE antibody is generated from rabbits immunized with a KLH conjugated synthetic peptide between 142-171 amino acids from the Central region of human GALE.
Clone:	RB21189
Isotype:	Ig Fraction
Predicted Reactivity:	B, M
Purification:	This antibody is purified through a protein A column, followed by peptide affinity purification.

Target Details

Target:	GALE
---------	------

Target Details

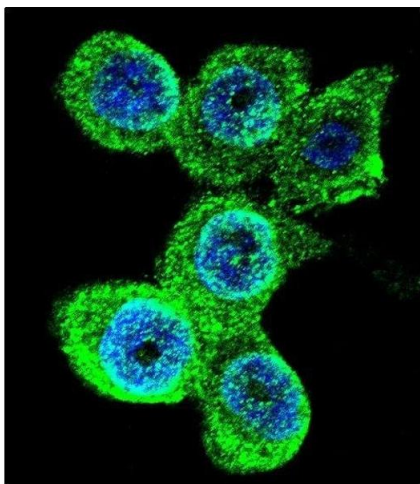
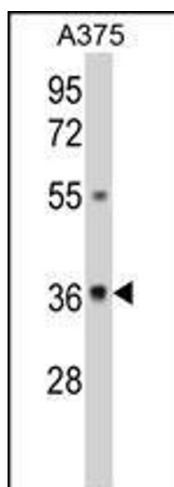
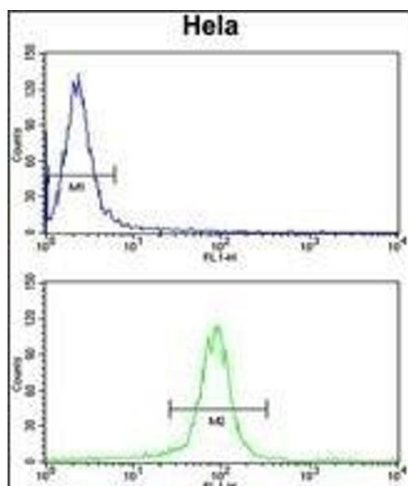
Alternative Name:	GALE (GALE Products)
Background:	UDP-galactose-4-epimerase catalyzes two distinct but analogous reactions: the epimerization of UDP-glucose to UDP-galactose, and the epimerization of UDP-N-acetylglucosamine to UDP-N-acetylgalactosamine. The bifunctional nature of the enzyme has the important metabolic consequence that mutant cells (or individuals) are dependent not only on exogenous galactose, but also on exogenous N-acetylgalactosamine as a necessary precursor for the synthesis of glycoproteins and glycolipids.
Molecular Weight:	38282
Gene ID:	2582
NCBI Accession:	NP_000394 , NP_001008217 , NP_001121093
UniProt:	Q14376
Pathways:	Response to Water Deprivation , Cellular Glucan Metabolic Process

Application Details

Application Notes:	IF: 1:10~50. WB: 1:1000. IHC-P: 1:50~100. FC: 1:10~50
Restrictions:	For Research Use only

Handling

Format:	Liquid
Buffer:	Purified polyclonal antibody supplied in PBS with 0.09 % (W/V) sodium azide.
Preservative:	Sodium azide
Precaution of Use:	This product contains Sodium azide: a POISONOUS AND HAZARDOUS SUBSTANCE which should be handled by trained staff only.
Storage:	4 °C, -20 °C
Storage Comment:	Maintain refrigerated at 2-8 °C for up to 6 months. For long term storage store at -20 °C in small aliquots to prevent freeze-thaw cycles.
Expiry Date:	6 months



Flow Cytometry

Image 1. GALE Antibody (Center) (ABIN390889 and ABIN2841099) flow cytometry analysis of HeLa cells (bottom histogram) compared to a negative control cell (top histogram). FITC-conjugated goat-anti-rabbit secondary antibodies were used for the analysis.

Western Blotting

Image 2. Western blot analysis of GALE Antibody (Center) (ABIN390889 and ABIN2841099) in cell line lysates (35 μ g/lane). GALE (arrow) was detected using the purified Pab.

Immunofluorescence

Image 3. Confocal immunofluorescent analysis of GALE Antibody (Center) (ABIN390889 and ABIN2841099) with WiDr cells followed by Alexa Fluor 488-conjugated goat anti-rabbit IgG (green). DAPI was used to stain the cell nuclei (blue).

Please check the [product details page](#) for more images. Overall 4 images are available for ABIN390889.