

Datasheet for ABIN390897  
**anti-RAGE antibody (AA 206-234)**[Go to Product page](#)

## 3 Images

## Overview

Quantity:	400 µL
Target:	RAGE (AGER)
Binding Specificity:	AA 206-234
Reactivity:	Human
Host:	Rabbit
Clonality:	Polyclonal
Conjugate:	This RAGE antibody is un-conjugated
Application:	Western Blotting (WB), Immunofluorescence (IF)

## Product Details

Immunogen:	This RAGE antibody is generated from rabbits immunized with a KLH conjugated synthetic peptide between 206-234 amino acids from the Central region of human RAGE.
Clone:	RB21217
Isotype:	Ig Fraction
Purification:	This antibody is purified through a protein A column, followed by peptide affinity purification.

## Target Details

Target:	RAGE (AGER)
Alternative Name:	RAGE ( <a href="#">AGER Products</a> )
Background:	RAGE is able to phosphorylate several exogenous substrates and to undergo

## Target Details

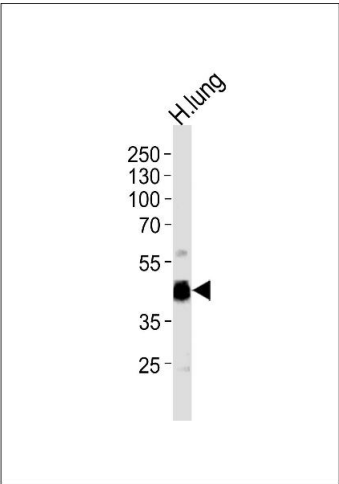
	autophosphorylation.
Molecular Weight:	48014
Gene ID:	5891
NCBI Accession:	<a href="#">NP_001258940</a> , <a href="#">NP_055041</a>
UniProt:	<a href="#">Q9UQ07</a>
Pathways:	<a href="#">Carbohydrate Homeostasis</a> , <a href="#">Toll-Like Receptors Cascades</a> , <a href="#">Smooth Muscle Cell Migration</a> , <a href="#">S100 Proteins</a>

## Application Details

Application Notes:	IF: 1:10~50. WB: 1:1000. WB: 1:1000
Restrictions:	For Research Use only

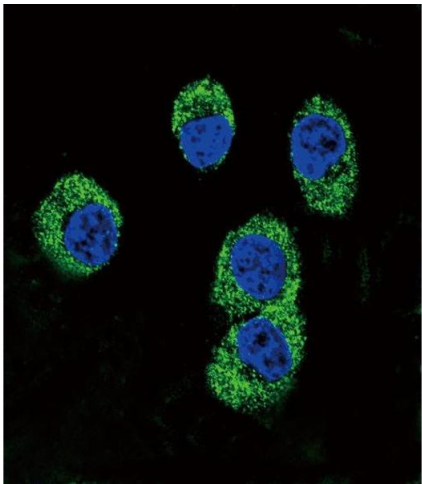
## Handling

Format:	Liquid
Buffer:	Purified polyclonal antibody supplied in PBS with 0.09 % (W/V) sodium azide.
Preservative:	Sodium azide
Precaution of Use:	This product contains Sodium azide: a POISONOUS AND HAZARDOUS SUBSTANCE which should be handled by trained staff only.
Storage:	4 °C, -20 °C
Storage Comment:	Maintain refrigerated at 2-8 °C for up to 6 months. For long term storage store at -20 °C in small aliquots to prevent freeze-thaw cycles.
Expiry Date:	6 months



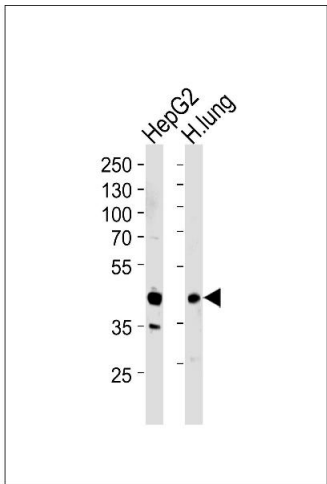
### Western Blotting

**Image 1.** Western blot analysis of lysate from human lung tissue lysate, using RAGE Antibody (Center) (ABIN390897 and ABIN2841104). (ABIN390897 and ABIN2841104) was diluted at 1:1000 at each lane. A goat anti-rabbit IgG H&L(HRP) at 1:5000 dilution was used as the secondary antibody. Lysate at 35 µg per lane.



### Immunofluorescence

**Image 2.** Confocal immunofluorescent analysis of RAGE Antibody (Center) (ABIN390897 and ABIN2841104) with MDA-M cell followed by Alexa Fluor 488-conjugated goat anti-rabbit IgG (green). DI was used to stain the cell nuclear (blue).



### Western Blotting

**Image 3.** Western blot analysis of lysates from HepG2 cell line and human lung tissue lysates (from left to right), using RAGE Antibody (Center) (ABIN390897 and ABIN2841104). (ABIN390897 and ABIN2841104) was diluted at 1:1000 at each lane. A goat anti-rabbit IgG H&L(HRP) at 1:5000 dilution was used as the secondary antibody. Lysates at 35 µg per lane.