

Datasheet for ABIN390902
anti-SAR1A antibody (AA 122-149)



[Go to Product page](#)

3 Images

Overview

Quantity:	400 µL
Target:	SAR1A
Binding Specificity:	AA 122-149
Reactivity:	Human
Host:	Rabbit
Clonality:	Polyclonal
Conjugate:	This SAR1A antibody is un-conjugated
Application:	Western Blotting (WB), Flow Cytometry (FACS), Immunohistochemistry (Paraffin-embedded Sections) (IHC (p))

Product Details

Immunogen:	This SAR1A antibody is generated from rabbits immunized with a KLH conjugated synthetic peptide between 122-149 amino acids from the Central region of human SAR1A.
Clone:	RB21259
Isotype:	Ig Fraction
Predicted Reactivity:	B, M, Pig
Purification:	This antibody is purified through a protein A column, followed by peptide affinity purification.

Target Details

Target:	SAR1A
---------	-------

Target Details

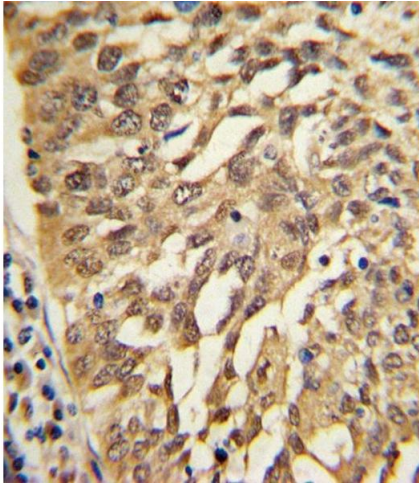
Alternative Name:	SAR1A (SAR1A Products)
Background:	SAR1A is involved in transport from the endoplasmic reticulum to the Golgi apparatus (By similarity) and required to maintain SEC16A localization at discrete locations on the ER membrane perhaps by preventing its dissociation. SAR1A-GTP-dependent assembly of SEC16A on the ER membrane forms an organized scaffold defining endoplasmic reticulum exit sites (ERES).
Molecular Weight:	22367
Gene ID:	56681
NCBI Accession:	NP_001136120 , NP_064535
UniProt:	Q9NR31

Application Details

Application Notes:	WB: 1:1000. IHC-P: 1:10~50. FC: 1:10~50
Restrictions:	For Research Use only

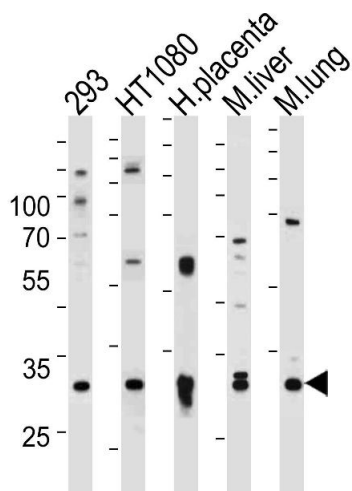
Handling

Format:	Liquid
Buffer:	Purified polyclonal antibody supplied in PBS with 0.09 % (W/V) sodium azide.
Preservative:	Sodium azide
Precaution of Use:	This product contains Sodium azide: a POISONOUS AND HAZARDOUS SUBSTANCE which should be handled by trained staff only.
Storage:	4 °C, -20 °C
Storage Comment:	Maintain refrigerated at 2-8 °C for up to 6 months. For long term storage store at -20 °C in small aliquots to prevent freeze-thaw cycles.
Expiry Date:	6 months



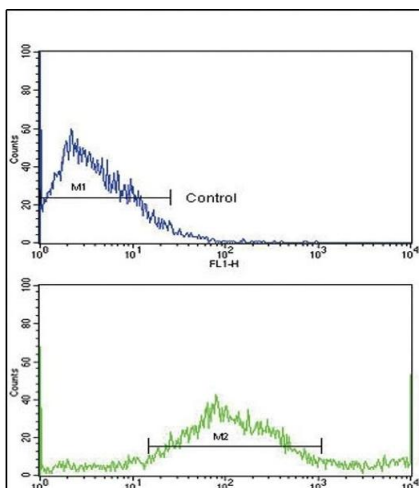
Immunohistochemistry (Paraffin-embedded Sections)

Image 1. Formalin-fixed and paraffin-embedded human lung carcinoma with SAR1A Antibody (Center), which was peroxidase-conjugated to the secondary antibody, followed by DAB staining. This data demonstrates the use of this antibody for immunohistochemistry, clinical relevance has not been evaluated.



Western Blotting

Image 2. Western blot analysis of lysates from 293,H cell line,human placenta,mouse liver and lung tissue (from left to right),using SAR1A Antibody (Center) (ABIN390902 and ABIN2841109). (ABIN390902 and ABIN2841109) was diluted at 1:1000 at each lane. A goat anti-rabbit IgG H&L(HRP) at 1:5000 dilution was used as the secondary antibody.Lysates at 35 µg per lane.



Flow Cytometry

Image 3. Flow cytometric analysis of NCI- cells using SAR1A Antibody (Center)(bottom histogram) compared to a negative control cell (top histogram). FITC-conjugated goat-anti-rabbit secondary antibodies were used for the analysis.