

Datasheet for ABIN390905  
**anti-TGM4 antibody (AA 135-164)**

## 3 Images

[Go to Product page](#)

## Overview

Quantity:	400 µL
Target:	TGM4
Binding Specificity:	AA 135-164
Reactivity:	Human, Mouse
Host:	Rabbit
Clonality:	Polyclonal
Conjugate:	This TGM4 antibody is un-conjugated
Application:	Western Blotting (WB), Flow Cytometry (FACS), Immunohistochemistry (Paraffin-embedded Sections) (IHC (p))

## Product Details

Immunogen:	This TGM4 antibody is generated from rabbits immunized with a KLH conjugated synthetic peptide between 135-164 amino acids from the Central region of human TGM4.
Clone:	RB21271
Isotype:	Ig Fraction
Purification:	This antibody is purified through a protein A column, followed by peptide affinity purification.

## Target Details

Target:	TGM4
Alternative Name:	TGM4 ( <a href="#">TGM4 Products</a> )

## Target Details

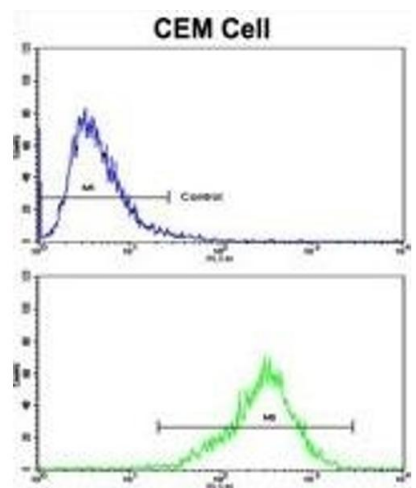
Background:	TGM4 is associated with the mammalian reproductive process and catalyzes the cross-linking of proteins and the conjugation of polyamines to specific proteins in the seminal tract.
Molecular Weight:	77145
Gene ID:	7047
NCBI Accession:	<a href="#">NP_003232</a>
UniProt:	<a href="#">P49221</a>

## Application Details

Application Notes:	WB: 1:1000-1:2000. IHC-P: 1:50~100. FC: 1:10~50
Restrictions:	For Research Use only

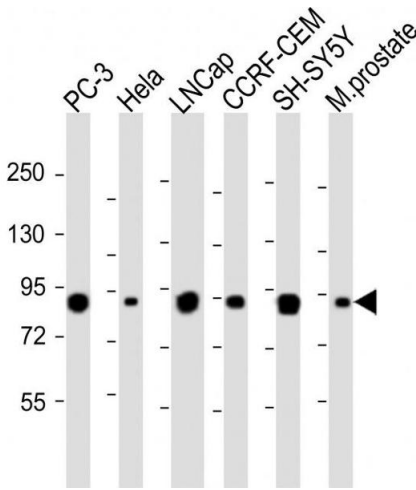
## Handling

Format:	Liquid
Buffer:	Purified polyclonal antibody supplied in PBS with 0.09 % (W/V) sodium azide.
Preservative:	Sodium azide
Precaution of Use:	This product contains Sodium azide: a POISONOUS AND HAZARDOUS SUBSTANCE which should be handled by trained staff only.
Storage:	4 °C, -20 °C
Storage Comment:	Maintain refrigerated at 2-8 °C for up to 6 months. For long term storage store at -20 °C in small aliquots to prevent freeze-thaw cycles.
Expiry Date:	6 months



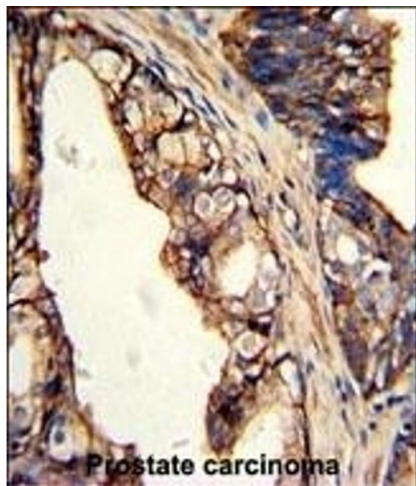
Flow Cytometry

**Image 1.** Flow cytometric analysis of CEM cells using TGM4 Antibody (Center)(bottom histogram) compared to a negative control cell (top histogram). FITC-conjugated goat-anti-rabbit secondary antibodies were used for the analysis.



Western Blotting

**Image 2.** All lanes : Anti-TGM4 Antibody (Center) at 1:1000-1:2000 dilution Lane 1: PC-3 whole cell lysate Lane 2: Hela whole cell lysate Lane 3: LNCap whole cell lysate Lane 4: CCRF-CEM whole cell lysate Lane 5: SH-SY5Y whole cell lysate Lane 6: Mouse prostate whole tissue lysate Lysates/proteins at 20 µg per lane. Secondary Goat Anti-Rabbit IgG, (H+L), Peroxidase conjugated at 1/10000 dilution. Predicted band size : 77 kDa Blocking/Dilution buffer: 5 % NFDM/TBST.



Immunohistochemistry (Paraffin-embedded Sections)

**Image 3.** Formalin-fixed and paraffin-embedded human prostate carcinoma with TGM4 Antibody (Center), which was peroxidase-conjugated to the secondary antibody, followed by DAB staining. This data demonstrates the use of this antibody for immunohistochemistry, clinical relevance has not been evaluated.